

ISC CENSUS
2012

PUPILS
SCHOOL FEES
BURSARIES & SCHOLARSHIPS
CAPITAL EXPENDITURE
TEACHING STAFF
PARTNERSHIPS
UNIVERSITY ENTRANCE



independent
schools
council

This report is based on a survey carried out in January 2012. All 1,221 schools in UK membership of the constituent associations of ISC completed the survey. In addition, two schools from the Republic of Ireland completed the survey and are included in our tables where appropriate. All information relates to January 2012, except for expenditure on buildings and equipment, which relates to the financial year ending at various dates in 2011, and information on post-18 school leavers and entry to Higher Education, which relates to entry in autumn 2011.

Appendix One gives a snapshot of ISC schools as they were in January 2012. Appendix Two shows comparative figures for the schools that completed the Census in both 2011 and 2012 and is therefore the best guide for annual change.

ISC constituent associations are: The Association of Governing Bodies of Independent Schools (AGBIS), the Council of British International Schools (COBIS), the Girls' Schools Association (GSA), the Headmasters' and Headmistresses' Conference (HMC), The Independent Association of Prep Schools (IAPS), the Independent Schools Association (ISA), the Independent Schools' Bursars Association (ISBA) and the Society of Heads (SofH).

Two associations are affiliate members of ISC: The Boarding Schools' Association (BSA) and The Scottish Council of Independent Schools (SCIS).

The data contained in this report does not include figures for COBIS schools due to the complexities of comparing UK and international schools' data.

The Society of Heads was previously known as The Society of Headmasters and Headmistresses of Independent Schools and was referred to in the 2011 Census as SHMIS.

The ISC research team would like to thank all participating schools for the considerable time taken to complete the Census and to check returns, particularly during the busy start of the spring term and when other Census completions are required. The online data collection system is working well and allows us to continually improve and ensure accuracy.

ISC Research & Intelligence Team

Rudolf Elliott Lockhart (Head of Research)

Adele Gilpin

Ewa Jasiocha

Design and Layout: ForgeForge Design

tom@forgeforge.co.uk

Printing: Prolitho London

CONTENTS

Foreword	2
Summary and Key Trends	3
Pupil Numbers	5
Ethnic Diversity	8
Overseas Pupils	9
School Fees	11
Contribution to Fees	12
Capital Expenditure	13
Partnerships	13
Teaching Staff	14
SEN provision	15
School Type	15
Boarding and Day Schools	16
School Size	17
Single-Sex and Co-Education	18
Entrance to Higher Education	19

HEADLINE TABLES AND GRAPHS page

Fig 1. <i>Total schools and pupil numbers</i>	5
Fig 2. <i>Change in pupil numbers since 2011</i>	6
Fig 3. <i>Percentage change in pupil numbers compared with 1996, by sector</i>	6
Fig 4. <i>Annual percentage changes in pupil numbers for each year since 1985</i>	7
Fig 5. <i>Age profile of ISC pupils</i>	7
Fig 6. <i>Ethnicity of ISC pupils</i>	8
Fig 7. <i>Ethnicity of ISC pupils at schools in England</i>	8
Fig 8. <i>Non-British pupils with parents living overseas</i>	9
Fig 9. <i>Average annual growth in numbers of overseas pupils 2007-2012</i>	10
Fig 10. <i>School fees</i>	11

Fig 11. <i>Contributions to fees ranked by total value of assistance</i>	12	Table 9. <i>Total number of non-British pupils whose parents live overseas</i>	23
Fig 12. <i>Distribution of means-tested bursaries</i>	12	Table 10. <i>New pupils from overseas</i>	24
Fig 13. <i>Partnership activity</i>	13	Table 11. <i>Destinations of post-18 school leavers</i>	24
Fig 14. <i>Teachers and pupil-teacher ratio</i>	14	Table 12. <i>Destination of pupils going to non-UK universities</i>	25
Fig 15. <i>Teaching assistants</i>	14	Table 13. <i>Size of schools</i>	25
Fig 16. <i>SEN pupils</i>	15	Table 14. <i>Boarders as a percentage of all pupils</i>	26
Fig 17. <i>The most common year-group ranges within ISC schools</i>	15	Table 15. <i>Boys as a percentage of all pupils</i>	26
Fig 18. <i>Boarders as a percentage of all pupils</i>	16	Table 16. <i>Teacher numbers</i>	27
Fig 19. <i>Boarders as a percentage of all pupils in each region</i>	16	Table 17. <i>Teaching assistant numbers</i>	27
Fig 20. <i>Mean school size by type of school</i>	17	Table 18. <i>Pupil-teacher ratios</i>	27
Fig 21. <i>Size of school</i>	17	Table 19. <i>Changes to full-time teachers</i>	28
Fig 22. <i>Mean school size from 1985 to 2012</i>	17	Table 20. <i>SEN pupils</i>	28
Fig 23. <i>Boys as a percentage of all pupils</i>	18	Appendix Two (Comparative Tables)	<small>page</small>
Fig 24. <i>Proportion of year-groups that are entirely boys, entirely girls, or have both</i>	18	Table 1. <i>School and pupil numbers</i>	29
Fig 25. <i>Post-18 school-leavers going on to Higher Education</i>	19	Table 2. <i>Pupil numbers by age</i>	30
Fig 26. <i>Destination of pupils going to non-UK universities</i>	19	Table 3. <i>Pupil numbers by year-group</i>	31
Appendix One (Non-Comparative Tables)	<small>page</small>	Table 4. <i>New pupil numbers by year-group</i>	32
Table 1. <i>School and pupil numbers</i>	20	Table 5. <i>Pupil numbers and fees by region</i>	33
Table 2. <i>Pupil numbers by age</i>	20	Table 6. <i>Fees by school type and age-group</i>	33
Table 3. <i>Pupil numbers by year-group</i>	21	Table 7. <i>Contributions to fees (termly values)</i>	34
Table 4. <i>New pupils by year-group</i>	21	Table 8. <i>Capital spending</i>	35
Table 5. <i>Pupil numbers and fees by region</i>	22	Table 9. <i>Total number of non-British pupils whose parents live overseas</i>	36
Table 6. <i>Fees by age group</i>	22	Table 10. <i>New pupils from overseas</i>	37
Table 7. <i>Contributions to fees (termly values)</i>	22	Table 11. <i>Teacher numbers</i>	38
Table 8. <i>Capital spending</i>	23	Table 12. <i>Teaching assistant numbers</i>	38
		Table 13. <i>Pupil-teacher ratios</i>	39
		Table 14. <i>Changes to full-time teachers</i>	40

Foreword

Independent schools throughout the country should be very proud of the results of this census. At a time of recession, when very many parents are struggling financially, it is clear that finding fees for their children's education remains a priority for very large numbers. For the first time since 2008 the number of pupils in our schools has risen.

There are two main reasons for this. One is the terrific exam results achieved by our schools despite the fact, rarely reflected in the press, that most ISC schools are not academically selective. At GCSE, just 6.5% of entries come from independent schools yet our pupils gain 26.0% of the A* grades. A third of students getting AAA or better at A-level come from our schools. We achieve very strong results, especially in the traditional, hard subjects such as science and modern languages.

But the second reason is the commitment our schools make to education beyond the classroom, something which is reflected in our disproportionate influence on areas of life such as sport (one third of the gold medals in the Beijing Olympics) and the arts - not least music and acting.

Many independent schools are quite small, some are in fairly remote locations, several depend heavily on boarding, all face significant budgetary constraints. But because we offer an excellent education, because our schools are some of the best in the world, we continue to thrive.

This census also shows something of the diversity of our schools - the large minority ethnic student population, the growing demand for our schools from overseas, and the £284 million spent last year on means-tested bursaries.

It also shows that the very great majority of our schools are engaged in partnership schemes with local maintained schools and the wider community - something which grows in significance every year.

It is not easy to run schools which have to raise every penny they need to operate. We will always face political difficulties and we are often misrepresented in the press. But in 2012 we can be proud of the fact that in so many areas of education we set the highest standards and act as a force for good both in the country as a whole and for the individual pupils who are fortunate enough to attend our schools.

Barnaby Lenon,
Chairman, Independent Schools Council

Summary and Key Trends

INDEPENDENT SCHOOLS IN 2012

The annual census of ISC schools taken in January each year provides a snapshot not just of these schools but of wider social and economic trends in Britain. The census also measures some of these trends over time. This year's **headlines** include:

- the resilience of independent schools in the economic downturn of 2008-11 compared to that of 1991-94
- how regional trends in independent schools reflect the various regional economies of Britain
- how independent schools are changing in size, shape and ethnicity
- the internationalisation of UK independent schools
- an average fee rise below the rate of inflation and an increase in fee assistance above the rate of inflation
- the wide-ranging public benefit work of ISC schools

RESILIENCE THROUGH ECONOMIC DOWNTURN

Pupil numbers are up by 0.1% compared to equivalent numbers for 2011 (Appendix Two, Table 1, p29). This is the first annual rise since 2008. This year there are **508,472 pupils** at **1,223 ISC schools**. Notably, the **2009-2011 downturn** in pupil numbers (now halted) was **much shallower** than that of **1991-94** (Figure 4, p7). This year's encouraging growth in the number of pupils at independent schools continues the pattern of the past decade in which independent schools have maintained **strong relative growth**. This is over a period in which the **pupil population nationally has fallen** (Figure 3, p6).

REGIONAL TRENDS

London and the south east is leading the recovery in the UK economy. In 2011 PricewaterhouseCoopers (PwC) produced a UK regional index of household financial stress showing relative buoyancy in the south, east, London and Scotland, compared to relative stress in Wales, the west and the north (R. Lund, *Regional household exposure to financial stress* (PricewaterhouseCoopers, November 2011)). The ISC census shows how UK **independent schools reflect and serve these regional economies and households:**

- **45% of the schools and 43% of the pupils are in the south east and in London**, with a **significant concentration** also in **lowland Scotland** (Appendix One, Table 5, p22)
- **fee levels vary across regions** and are thus sensitive to the **relative strength of local economies** (Appendix One, Table 5, p22)
- **pupil numbers rose by 1.2% in London and the south east**, they **fell by 0.7% in other parts of the UK**, mirroring PwC's index of household financial stress (Appendix Two, Table 5, p33)

CHANGE IN THE SIZE, SHAPE AND ETHNICITY OF INDEPENDENT SCHOOLS

Independent schools are getting larger, changing their shape to include a wider range of age groups and a pupil body that is increasingly ethnically diverse:

- consistently over the **last 25 years** independent schools have been **growing in size**. The **average school** today is **larger by one third** than in **1985** (Figure 22, p17)
- in **England** there is **higher proportion of minority ethnic pupils** at ISC schools (**26.1%**) than in state **maintained** schools (**24.5%**) (Figure 7, p8)

Summary and Key Trends

INTERNATIONALISATION OF UK INDEPENDENT SCHOOLS

Independent schools are increasingly international in their pupil population and in the university destinations to which pupils go. They are recognised by the OECD as being the best academic schools in the world (alongside New Zealand and South Korea) and they are preparing pupils to be successful in a global world.

- **27% of schools** reported an **increase** in the number of **pupils going to overseas universities**. **91% of ISC pupils progress to higher education; 2.8% of these chose to study overseas** (Figure 26, p19 and Appendix One, Table 12, p25)
- The **proportion of non-British pupils** at ISC schools in **2012 was up 5.8%** compared to 2011 at **26,376** (Figure 8, p9 and Appendix Two, Table 9, p36)
- **Countries/regions** with the **fastest growth** rate of ISC pupils over the last five years are: **Russia; Spain; India/Pakistan/Sri Lanka/Bangladesh; and mainland China** (Figure 9, p10)
- An increasing number of ISC schools have overseas campuses. ISC schools currently have **20 campuses overseas**

FEES AND FEE ASSISTANCE

Fees rose by **4.5%** last year, a figure **below** the **Consumer Price Index** (5.1%) and the **second lowest** rise since **1994** (Figure 10, p11). Across ISC schools **fee assistance** grew again this year:

- the value of **means-tested bursaries** rose by **9.4%**, an **increase** of more than **£24m** on last year's figures (Appendix Two, Table 7, p34)
- **33.2%** of ISC pupils **receive help** with their fees, with ISC schools **providing** more than **£590m** in assistance annually (Figure 11, p12)
- **8%** of pupils are on **means-tested bursaries**; of these, **40%** had **more than half** of their **fees remitted** (Figure 11, p12 and Figure 12, p12)

PUBLIC BENEFIT BEYOND FEE ASSISTANCE

The Upper Tribunal's ruling last year on ISC's **judicial review** of the Charity Commission's **public benefit guidance** brought welcome clarity for the sector, in **confirming** both the **charitable status** of our schools and the central **role that governors have** to play in determining what activities best further each school's charitable purposes. This year's Census shows the **breadth of ways** in which **schools widen access** and live up to their charitable purposes beyond straight fee assistance:

- **Over 90%** of ISC schools are involved in partnerships with state schools or the wider community (Figure 13, p13)
- **1,109** ISC schools **share facilities and expertise** with people outside the sector (Figure 13, p13)
- **335** ISC schools open access to **pupils from maintained schools** to attend certain lessons or educational events; **103** ISC schools help prepare **A-level pupils** at **maintained schools** for entry to **Higher Education**; **76** ISC schools **second teaching staff to maintained schools**
- One of the most recent forms of partnership is the sponsoring of academies. Currently **19** ISC schools **sponsor academies** and **14** **co-sponsor** academies

Pupil Numbers

All 1,221 schools in UK membership of the constituent associations of ISC completed the 2012 Census. In addition, two schools from the Republic of Ireland completed the survey and are included in our tables where appropriate.

There are now 508,472 pupils at ISC member schools, up from 506,500 in 2011. The proportions of day (86.5%) and boarding pupils (13.5%) are broadly in line with last year. The share of girls and boys at ISC schools is very nearly equal, with girls representing 49.0% of all pupils.

Figure 2 shows year-on-year comparisons, based on the 1,209 schools that completed the Census in both 2011 and 2012. The number of pupils in these schools has risen by 0.1% since 2011, from 504,224 to 504,949. This is the first like-for-like rise in pupil numbers since 2008.

Figure 3 shows how pupil numbers in the independent sector have outpaced those in the maintained sector for more than a decade. The underlying trend of the last quarter of a century has been for the sector to grow: indeed, Figure 4 shows that in 20 of the last 28 years there has been a year-on-year increase in the number of pupils at ISC schools.

The rise in pupil numbers was not consistent across figures for day and boarding pupils; indeed, while the number of day pupils increased by 0.2% in like-for-like terms, among boarders there was a decline of 0.2%.

The number of boys increased by 0.3% at those schools completing both the 2011 and 2012 Census; the number of day boys increased by 0.4% and of boarding boys by 0.1%. The number of girls at schools in both the 2011 and 2012 Census remained steady.

The change in pupil numbers from 2011 was not consistent across all age groups. Among schools that completed both the 2011 and 2012 Census, there was a rise of 3.2% among nursery pupils, a rise of 1.7% among sixth-form pupils and a rise of 0.1% among junior pupils; there was, however, a decline of 0.8% among senior pupils. These differences broadly reflect the change in the underlying demographics of the UK population: a declining birth rate before the year 2000 and a rising birth rate over the subsequent 12 years helps to explain why there has been a fall in the number of senior pupils and not for other age-groups.

There were also regional variations in pupil number changes. The growth in pupil numbers was strongest in London and the south east where almost 45% of ISC schools are situated: among schools that participated in the Census in both 2011 and 2012 there was a rise of 1.3% in Greater London and of 1.2% in the rest of the south east. In contrast, pupil numbers declined in many other parts of the country, falling by 1.6% in the north and 1.9% in Wales. The different regional trends reflect the different experiences of the recession in different parts of the country. The PwC index of Regional Household Financial Stress, released in November 2011, highlights the notably higher levels of financial stress for households in Wales and the north east than in London.

Schools in inner-city and urban areas saw a 0.2% year-on-year rise in pupil numbers, whereas those in rural areas saw a decline of 0.2%.

Fig 1. Total schools and pupil numbers

Member schools	Number	% of all pupils
Charities	1,007	
Other	216	
Total	1,223	
Not-for-profit/For-profit schools		
Not For Profit	1,031	
For Profit	192	
Total	1,223	
Boarders		
Boarders (boys)	38,557	7.6
Boarders (girls)	29,919	5.9
Total	68,476	13.5
Day pupils		
Day pupils (boys)	220,643	43.4
Day pupils (girls)	219,353	43.1
Total	439,996	86.5
All pupils		
Total (boys)	259,200	51.0
Total (girls)	249,272	49.0
Grand Total	508,472	100

For more details refer to Appendix One, Table 1, p20.

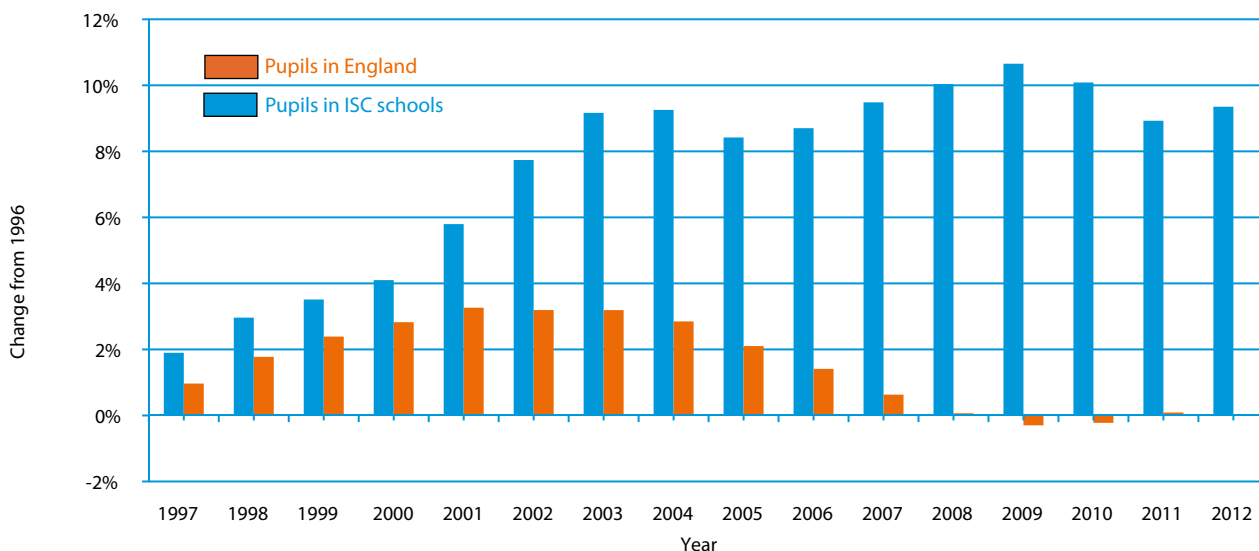
Pupil Numbers

Fig 2. Change in pupil numbers since 2011

Boarders	Number
Boarders (boys)	38,280 <i>38,236</i>
	0.1
Boarders (girls)	29,647 <i>29,833</i>
	-0.6
Total	67,927 <i>68,069</i>
	-0.2
Day pupils	
Day pupils (boys)	219,574 <i>218,799</i>
	0.4
Day pupils (girls)	217,448 <i>217,356</i>
	0.0
Total	437,022 <i>436,155</i>
	0.2
All pupils	
Total (boys)	257,854 <i>257,035</i>
	0.3
Total (girls)	247,095 <i>247,189</i>
	-0.0
Grand Total	504,949 <i>504,224</i>
	0.1

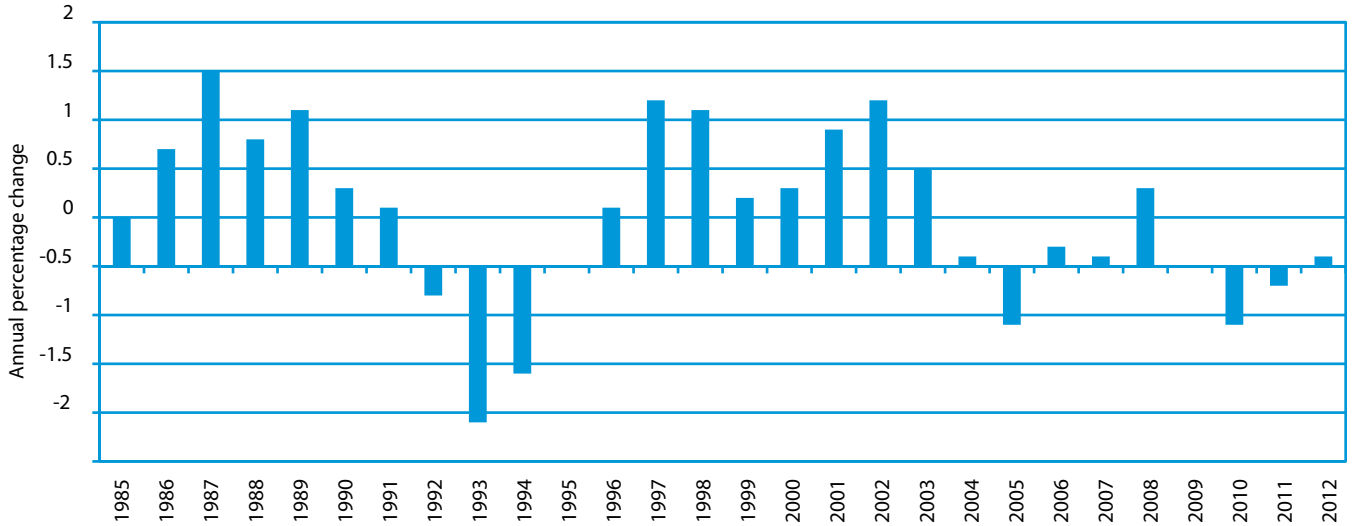
This table compares pupil numbers from the 1,209 schools that gave Census returns in both 2011 and 2012. 2012 figures are printed in bold, 2011 figures are represented underneath in italics. Figures highlighted in yellow give the percentage change between the two years. For more detail, refer to Appendix Two, Table 1, p29.

Fig 3. Percentage change in pupil numbers since 1996 by sector



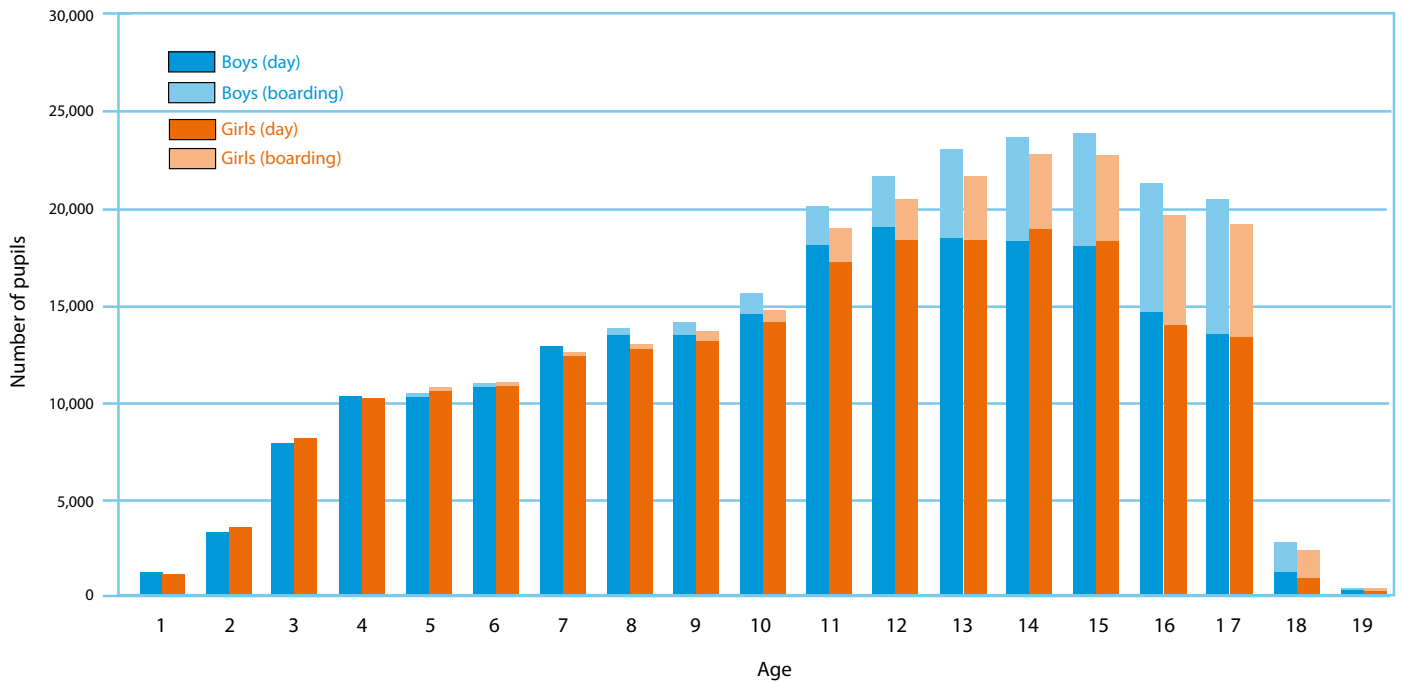
This chart shows cumulative change since 1996 in both sectors. Pupil number changes at ISC schools are for all UK schools; changes at all schools, maintained and independent, are for England only. Figures for pupil numbers in England in 2012 are not yet available and are therefore not included.

Fig 4. Annual percentage changes in pupil numbers for each year since 1985



This graph shows the year-on-year percentage changes in the number of ISC pupils from 1985-2012.

Fig 5. Age profile of ISC pupils



Ethnic Diversity

74.5% of ISC pupils are from a white British background while 25.5% are from a minority ethnic background. Figures for the maintained sector only cover schools in England: these show that in 2011, the most recent year for which figures are currently available, 75.5% of pupils were from a white British background and 24.5% were from a minority ethnic background. Among pupils at ISC schools in England in 2012, this compares with figures of 73.9% and 26.1% respectively.

Further analysis of the ethnicity of pupils from day schools alone indicates that 71.5% are white British and 28.5% are from a minority ethnic background. Excluding data from boarding schools ensures that the figures are not skewed by pupils from overseas attending boarding schools. These figures are further testimony to the diversity of ISC schools.

The figures for the ethnic mix within ISC schools are based on data for 74.1% of all ISC pupils from 86.2% of schools.

The trend over the last three years appears to be of a growing proportion of ISC pupils being from a minority ethnic background. Since 2009, when ISC first published data on the ethnicity of pupils, the proportion of pupils from a minority ethnic background has grown from 22.8% to 25.5%. This is in line with the increasing proportion of pupils in maintained schools coming from minority ethnic backgrounds.

Fig 6. Ethnicity of ISC pupils

	ISC (2012)	% share
White British	280,671	74.5
Minority ethnic	95,904	25.5
Total	376,575	

Fig 7. Ethnicity of ISC pupils at schools in England

	ISC (2012)	% share	Maintained Schools (2011)	% share
White British	263,418	73.9	4,960,770	75.5
Minority ethnic	93,205	26.1	1,613,690	24.5
Total	356,623		6,574,460	

Overseas Pupils

In ISC schools, there are currently 26,376 non-British pupils whose parents live overseas. This highlights the attraction of an education at an ISC school to a global market and reflects the PISA findings from the OECD which rank UK independent schools as among the best in the world.

37.0% of non-British pupils with parents living overseas come from Hong Kong and China. The next highest share from a single country comes from Germany (8.9%). Europe, as a whole, accounts for 34.3% of all non-British pupils with parents living overseas.

In 2012, non-British pupils make up 5.2% of the total ISC pupil population. Year-on-year comparisons show the number of non-British pupils with parents resident overseas to have risen by 5.8%. The growth has been predominantly based on increasing numbers of pupils with parents living in Europe and Asia choosing to come to ISC schools. The fastest growing markets over the last year have been in Russia and Spain. Further details can be seen in Appendix One, Table 9, p23 and Appendix Two, Table 9, p36.

Figure 9 shows some of the shifts in the overseas markets over the past six years. It shows the average annual change in pupil numbers for each country and region. It highlights the striking increase in the number of pupils with parents living in Russia, from 816 in 2007 (3.9% of all overseas pupils) to 1,722 in 2012 (6.5%). There are also notable increases in the number of pupils with parents living in Spain, with 1,252 pupils (4.7%) this year, up from 745 pupils (3.6%), and mainland China, where this year's total of 3,708 (14.1%) is up from 2,345 (11.2%). In contrast, the number of pupils with parents living in Hong Kong has declined slightly with 6,064 pupils (23.0%) this year, down from 6,209 (29.8%) in 2007.

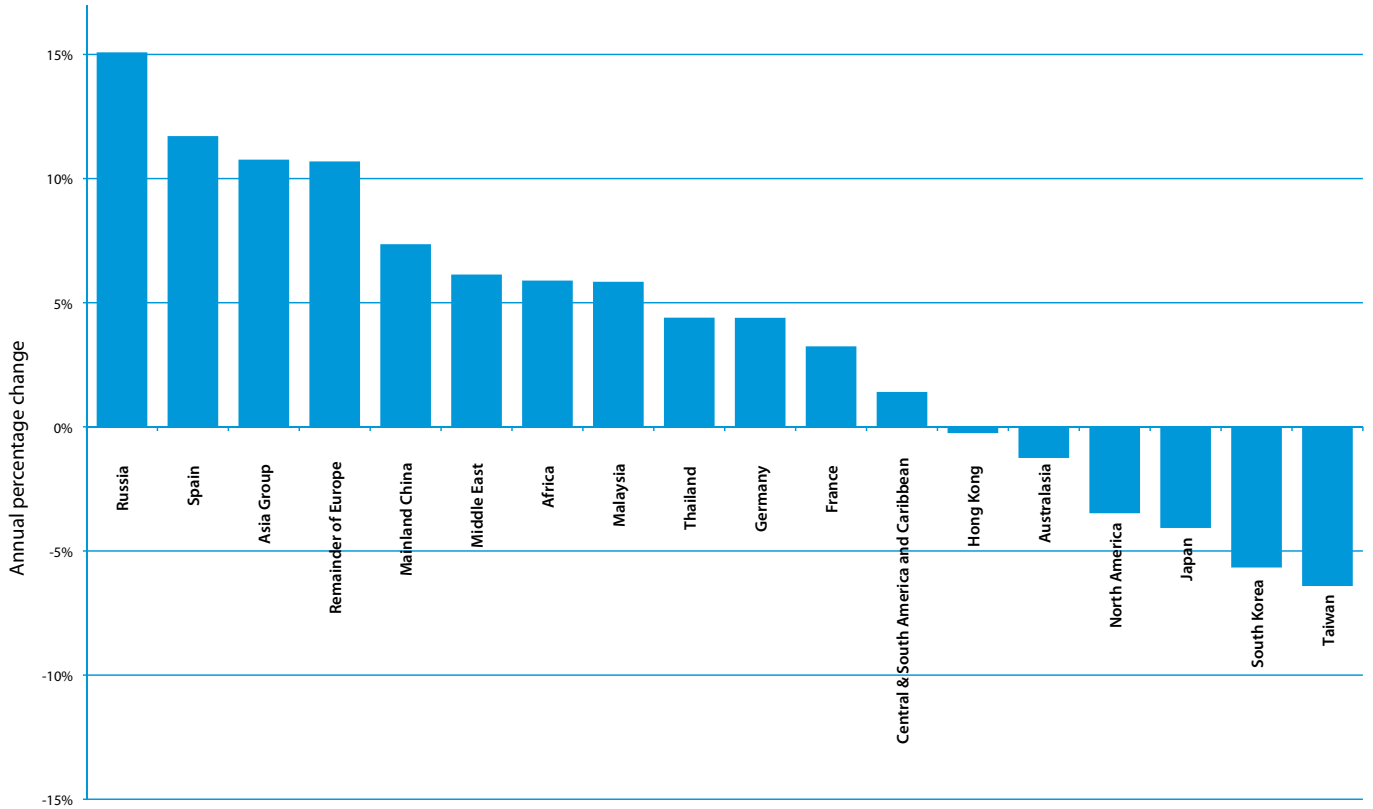
There are 11,252 non-British pupils with parents living overseas who are new to their schools this year, although not all of these pupils will be new to the sector: many will have simply moved from one school to another. New non-British pupils with parents living overseas represent 42.7% of all overseas pupils at ISC schools. Non-British pupils with parents living overseas account for 11.4% of all pupils new to their school this year. This is a greater proportion than the 5.2% that overseas pupils represent of all pupils, perhaps reflecting the fact that overseas pupils often attend their school for a shorter length of time than UK pupils. Further details can be seen from Appendix One, Table 10, p24 and Appendix Two, Table 10, p37.

Since 2009, schools wishing to recruit pupils from outside Europe have been required to hold a Tier 4 licence, issued by the UK Border Agency. Regulatory changes in 2011 imposed a further requirement: that the schools held Highly Trusted Sponsor (HTS) status within Tier 4. Subject to minor exceptions, therefore, any school recruiting non-EEA pupils must now be an HTS Tier 4 sponsor. Our Census discloses that 638 ISC schools are Tier 4 sponsors, with 613 of these holding HTS status. At those schools holding a Tier 4 licence, there were 25,364 non-British pupils with parents living overseas, of whom 19,318 were pupils from beyond the EEA. There were 10,797 overseas pupils new to Tier 4 licenced schools this year, 7,641 of whom were from beyond the EEA.

Fig 8. Non-British pupils with parents living overseas

Country	New to their school this year	%	Total non-British pupils	%
Hong Kong	1,966	17.5	6,064	23.0
Mainland China	1,696	15.1	3,708	14.1
Germany	1,322	11.7	2,340	8.9
Remainder of Europe EEA	902	8.0	2,135	8.1
Russia	841	7.5	1,722	6.5
Spain	843	7.5	1,252	4.7
Remainder of Europe Non-EEA	408	3.6	958	3.6
Nigeria	372	3.3	871	3.3
Remainder of Far East	276	2.5	797	3.0
USA	278	2.5	760	2.9
Middle East	302	2.7	740	2.8
South Korea	223	2.0	657	2.5
Rest of Africa	222	2.0	600	2.3
France	236	2.1	548	2.1
Central & South America	286	2.5	530	2.0
Thailand	213	1.9	529	2.0
Malaysia	230	2.0	500	1.9
Japan	177	1.6	490	1.9
Central Asia	127	1.1	297	1.1
Australasia	88	0.8	219	0.8
Taiwan	68	0.6	175	0.7
India	55	0.5	171	0.6
Rest of North America	53	0.5	116	0.4
Pakistan, Sri Lanka & Bangladesh	32	0.3	105	0.4
Ireland	36	0.3	92	0.3
Total non-British pupils with parents living overseas	11,252		26,376	

Fig 9. Average annual growth in numbers of overseas pupils 2007-2012



"Asia Group" includes the countries India, Pakistan, Sri Lanka and Bangladesh, as well as the regional groupings Central Asia and Remainder of Far East

School Fees

The average overall fee is up by 4.5%. This is fractionally below last year's 4.6% increase, and substantially below the average annual increase over the last two decades. The overall average termly fee is £4,596 (excluding nursery fees). The average boarding fee is £8,780 and the average day fee is £3,903.

These fee increases are lower than the education component of the Consumer Price Index rate of inflation which was 5.1% for the 12 months to January 2012.

Fees charged by schools vary by region, as Table 5 in Appendix One, p22 demonstrates. The average boarding fee ranges from £7,679 per

term in Wales to £9,724 in Greater London; the average day fee ranges from £3,057 per term in the North to £4,453 in Greater London.

Fees rose by an average of 5.2% at schools in Greater London in contrast to the average increase of 4.4% at schools in the rest of the UK. Nonetheless, pupil numbers increased at schools in London by 1.3%, a greater increase than in any other region. Details on the regional variation in fee changes are shown in Appendix Two, Table 5, p33.

Fig 10. School fees (not including nursery fees)

Age Group	Boarding Fee	Day Fee Boarding Schools	Day Fee Day Schools	Day Fee Average	Overall Average
Sixth-form	£9,189	£5,614	£3,984	£4,337	£5,913
Senior	£8,708	£5,185	£3,851	£4,124	£4,886
Junior	£6,510	£4,028	£3,456	£3,517	£3,582
Overall*	£8,780	£4,957	£3,694	£3,903	£4,596
% change	4.7	3.1	4.9	4.5	4.5

* Excluding nursery fees

Figures represent average fees per term. Average fee figures are based on fees at schools completing the Census in 2012; percentage change is calculated from the change among the 1,209 schools completing the Census in both 2011 and 2012.

Contribution to Fees

A total of 164,298 pupils receive help with their fees: this represents 33.2% of all pupils. The value of this help totals more than £700 million per year, an increase of 6.4% on last year at those schools completing both the 2011 and 2012 Census. More than 80% of total fee assistance comes directly from the schools themselves: ISC schools provided more than £590 million of assistance with fees in the academic year 2011/12, an increase of 7.9% on last year. Schools gave approximately twice as much assistance in the form of bursaries as they did scholarships. Around £280 million of assistance was in the form of means-tested bursaries; among schools completing the Census in both 2011 and 2012, the total value of the means-tested bursaries rose by 9.4%, well above the rate by which fees increased.

Means-tested bursaries were worth an average of £7,200 per pupil per year and were held by approximately 7.8% of all pupils at ISC schools. Figure 12 shows a breakdown of the 39,545 means-tested bursaries provided by ISC schools. 40.0% of pupils on means-tested bursaries had more than half of their fees remitted. There are 5,279 pupils at ISC schools who paid no fees at all.

The shift from scholarships to bursaries has been apparent over the past two years. While the total value of means-tested bursaries provided by schools has increased by almost £30 million since 2010 when ISC started collecting detailed records of means-tested bursaries – a rise of 11.4% – the total value of scholarships has remained largely stable over the same period.

Fig 11. Contributions to fees ranked by total value of assistance

Source	Number of pupils	Average help received by a pupil	% of pupils receiving help	Total value of fee assistance (annual)
The School	140,517	£4,239	27.64	£595,606,521
The School: Means Testing	39,545	£7,200	7.78	£284,733,432
The School: Reduction of fees - Eligibility*	62,624	£2,613	12.32	£163,652,363
The School: Reduction of fees - Excellence or Performance	47,339	£3,110	9.31	£147,220,726
Early Years Funding	23,582	£1,900	4.64	£44,805,019
Local Education Authorities†	1,887	£14,029	0.38	£26,473,633
Government Music and Dance Scheme	1,152	£20,819	0.23	£23,983,340
All other sources	2,636	£6,210	0.52	£16,369,342
Total	164,298	£4,305	33.21	£707,237,854

* Includes HM Forces discounts, staff discounts, sibling discounts and clergy discounts

† Excludes data for schools in Republic of Ireland, Northern Ireland, Channel Islands and the Isle of Man

Fig 12. Distribution of means-tested bursaries

Size of means-tested bursary	Number of pupils	% of bursary pupils
1-25%	10,802	27.3
26-50%	12,923	32.7
51-75%	5,789	14.6
76-100%	10,031	25.4
100%	5,279	13.3
Any means-tested bursary	39,545	

Capital Expenditure

Over the last year, ISC schools have continued to respond to the economic climate by increasing capital spending by less than the rate of inflation. Capital expenditure has increased by 2.2% among those schools who completed the Census in both 2011 and 2012, with schools spending an average of £1,300 per pupil.

There were significant reductions in some areas: spending on new buildings was down 5.0% and on new or refurbished boarding accommodation was down 14.7%; in contrast, spending on improvements to existing buildings increased by 15.7%. Further details are available in Appendix One, Table 8, p23, and Appendix Two, Table 8, p35.

Partnerships

ISC schools continue to work with schools in the maintained sector and with the wider community, sharing facilities and expertise. 1,109 schools reported that they were involved in partnership activities. 34 schools are sponsors or co-sponsors of academies. There are many varied ways that ISC schools are involved in

partnerships: 335 ISC schools open access to pupils from maintained schools to attend certain lessons or other educational events; 103 ISC schools help prepare A-level pupils at maintained schools for entry to Higher Education; 76 ISC schools second teaching staff to maintained schools.

Fig 13. Partnership activity

	With state schools	With the community	Any Type	% of schools
Academic	478	278	537	43.9
Drama	349	455	560	45.8
Music	524	799	870	71.1
Sporting	811	806	970	79.3
Other	436	575	694	56.7
Any	973	1,051	1,109	90.7

Teaching Staff

A total of 54,014 full-time equivalent teachers are employed at ISC schools. 38.8% of full-time equivalent teachers at ISC schools are men. This compares with a figure of 30% of full-time qualified teachers in maintained schools in England in 2008, the most recent year for which figures are available.

The pupil-teacher ratio has remained stable at 9.4:1. This compares to an average of 16.6:1 in maintained mainstream schools in 2010. In ISC member schools the weighted pupil-teacher ratio (with each sixth-former counted as two) was up fractionally at 11.0:1 from 10.9:1

in 2011. These low pupil-teacher ratios reflect the commitment of many schools to teaching a wide range of subjects, even if class sizes are small and costs per pupil are high.

The sector remains attractive to teachers: in the last year, 1,573 full-time teachers arrived from the maintained sector; the number leaving to go to maintained schools was 418. Teacher turnover, as a proportion of the number of full-time staff employed, fell to 12.5% from 12.9% in 2011. For further details see Appendix Two, Table 14, p40.

Fig 14. Teachers and pupil-teacher ratio

Teachers (full time)	
Full-time (men)	19,649
Full-time (women)	26,660
Full-time Total	46,309
Teachers (part time)	
Part-time (men)	3,035
Part-time (women)	12,793
Part-time Total	15,828
Teachers (overall full time equivalent)	
Overall full-time (men)	20,977
Overall full-time (women)	33,037
Overall Full-time Total	54,014
Pupil-teacher ratio	
Pupil:teacher (raw)	9.4
Pupil:teacher (with sixth-form weighting)	11.0

This table shows the number of teachers in ISC schools together with the pupil-teacher ratio. Where sixth-form weighting has been applied, each sixth-former has been counted as two. The total numbers of staff are based on results from all 1,223 schools completing the Census in 2012. For more detail see Appendix One, Tables 16 & 18, p27 and Appendix Two, Tables 11 & 13, p38 & p39.

Fig 15. Teaching assistants

Teaching Assistants (full time)	
Full-time (men)	470
Full-time (women)	3,805
Full-time Total	4,275
Teaching Assistants (part time)	
Part-time (men)	216
Part-time (women)	3,882
Part-time Assistants Total	4,098
Teaching Assistants (overall full time equivalent)	
Overall full-time (men)	583
Overall full-time (women)	6,074
Overall full-time Total	6,657

This table shows the number of teaching assistants in ISC schools. The total numbers of staff are based on results from all 1,223 schools completing the Census in 2012. For more detail on teaching assistants see Appendix One, Table 17, p27 and Appendix Two, Table 12, p38.

SEN Provision

63,859 pupils at ISC schools have been identified as having special educational needs (SEN). 2,689 pupils hold statements of SEN. The most common SEN is dyslexia with over 1,100 schools having

at least one pupil with dyslexia; in total, there are more than 33,000 pupils with dyslexia in ISC schools.

Fig 16. SEN pupils

Types of SEN	Number of Pupils*	% of SEN pupils
Dyslexia	33,218	52.0
Other Unspecified	7,964	12.5
Dyspraxia	5,820	9.1
Information Processing	5,634	8.8
Speech & Language	3,550	5.6
Gross & Fine Motor Skills	2,881	4.5
Moderate Learning Difficulties (MLDs)	2,866	4.5
Autism Spectrum Disorder or Asperger’s Syndrome	2,667	4.2
Dyscalculia	1,903	3.0
Attention Deficit Hyperactivity Disorder (ADHD)	1,461	2.3
Emotional Difficulties	1,434	2.2
Hearing Impairment	1,233	1.9
Attention Deficit Disorder (ADD)	1,176	1.8
Visual Impairment	875	1.4
Behavioural Difficulties	696	1.1
Epilepsy	565	0.9
Cerebral Palsy	240	0.4
Tourette’s Syndrome	111	0.2
Severe Learning Difficulties (SLDs)	93	0.1
Profound & Multiple Learning Difficulties (PMLD)	72	0.1
Down’s Syndrome	22	0.0
TOTAL	63,859	

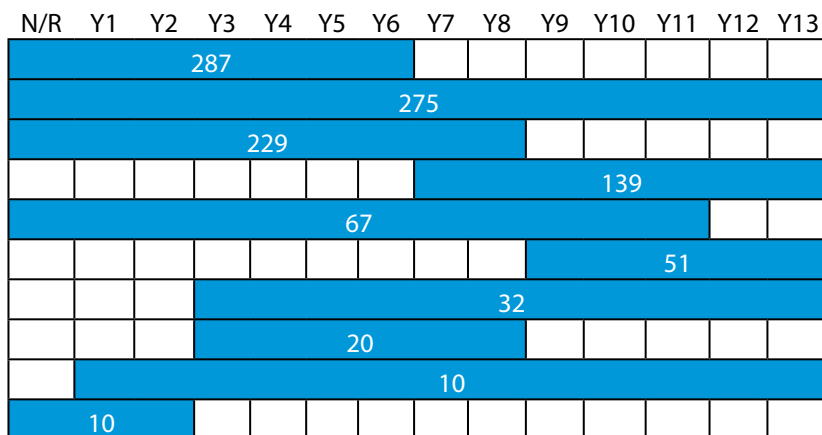
* Some pupils have more than one SEN, they are counted under each individual category of SEN, but are counted only once in the total.

School Type

ISC schools cover a range of different year-groups, sometimes making it hard to categorise them neatly. Figure 17 shows the most common sets of year-group ranges found within ISC schools. 287 schools cater

for pupils from Nursery or Reception to Year 6; 275 cater for pupils from Nursery or Reception to Year 13; 229 cater for pupils from Nursery or Reception to Year 8.

Fig 17. The most common year-group ranges within ISC schools



Other year-group ranges: 103 schools

Boarding and Day Schools

68,476 pupils board at ISC schools, making up 13.5% of total pupil numbers. At those schools completing Census returns in both 2011 and 2012, the number of boarding pupils dipped slightly by 0.2%.

489 schools, representing 40.0% of all ISC schools, have some boarding pupils. This is comparable with figures from the 2011 Census where 39.7% of ISC schools had some boarding pupils. Indeed, the proportion of schools with some boarders has been very stable for the past five years: in 2007, 39.5% of ISC schools had some boarding pupils.

The majority of schools with boarding still have over 75% day pupils. Approximately 10% of ISC schools are predominantly boarding; there are 12 ISC schools that are 100% boarding, the same number as last year.

There are notable regional variations in boarding figures. In the South West, 27.9% of all pupils board, while at schools in Greater London, just 2.2% of pupils board.

Fig 18. Boarders as a percentage of all pupils

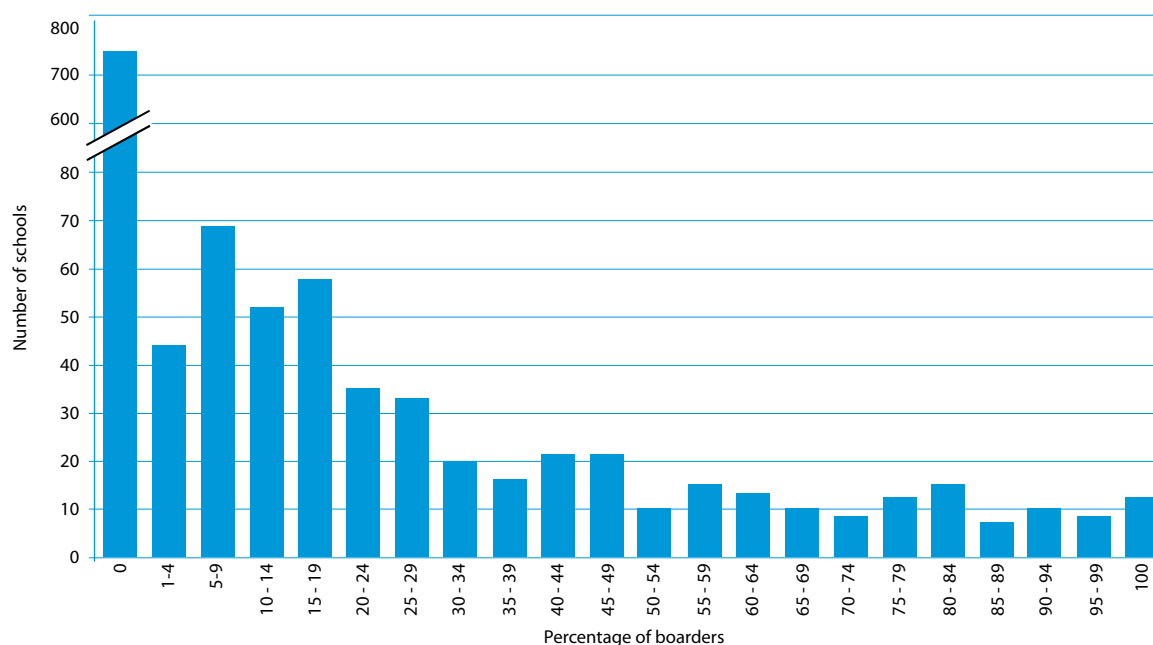


Fig 19. Boarders as a percentage of all pupils in each region

Region	No. of Schools	Total Boarders	% boarding pupils
South West	134	13,905	27.9
South East	359	26,399	19.0
East Midlands	59	4,419	17.6
Wales	17	1,066	16.0
West Midlands	92	5,041	13.7
East Anglia	152	6,610	10.8
Scotland	32	2,491	10.3
The North	168	5,849	8.0
Greater London	192	1,763	2.2
All regions	1,223	68,476	13.5

School Size

ISC schools vary in size from having fewer than 50 pupils to over 1,700, although most schools have fewer than 350 pupils. Nonetheless, the long tail of large schools drags up the mean school size: the average school has around 416 pupils, up on 2011's average of 410. This continues the trend of increasing school size in the sector, something that has been apparent over the last two decades as Figure 22 demonstrates.

The size of schools tends to vary according to the type of school. Figure 20 shows that senior schools tend to be larger than prep schools, schools with boarding pupils tend to be larger than schools with only day pupils, and that schools that are entirely single-sex tend to be larger than co-ed schools.

Fig 20. Mean school size by type of school

Type of school	Average number of pupils
Prep (no pupils in Y8 or above)	204
Senior (no pupils in Y6 or below)	549
Day pupils only	405
Some or all boarding pupils	432
Co-ed	402
Single-sex	467
Overall Average	416

Fig 21. Size of school

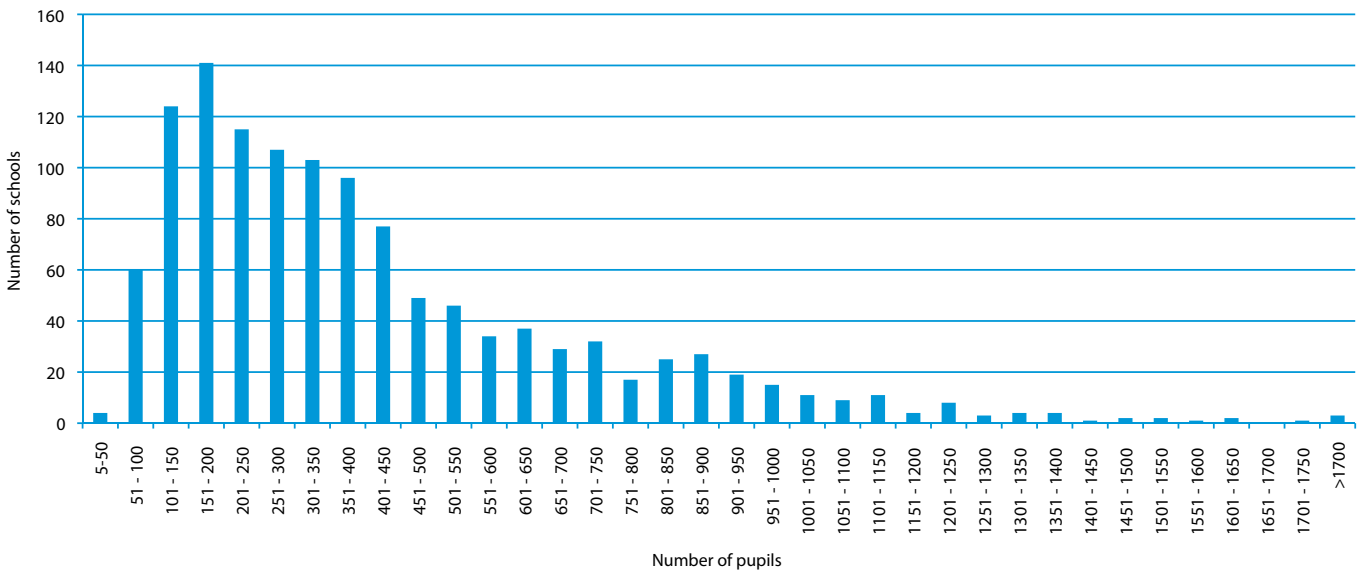
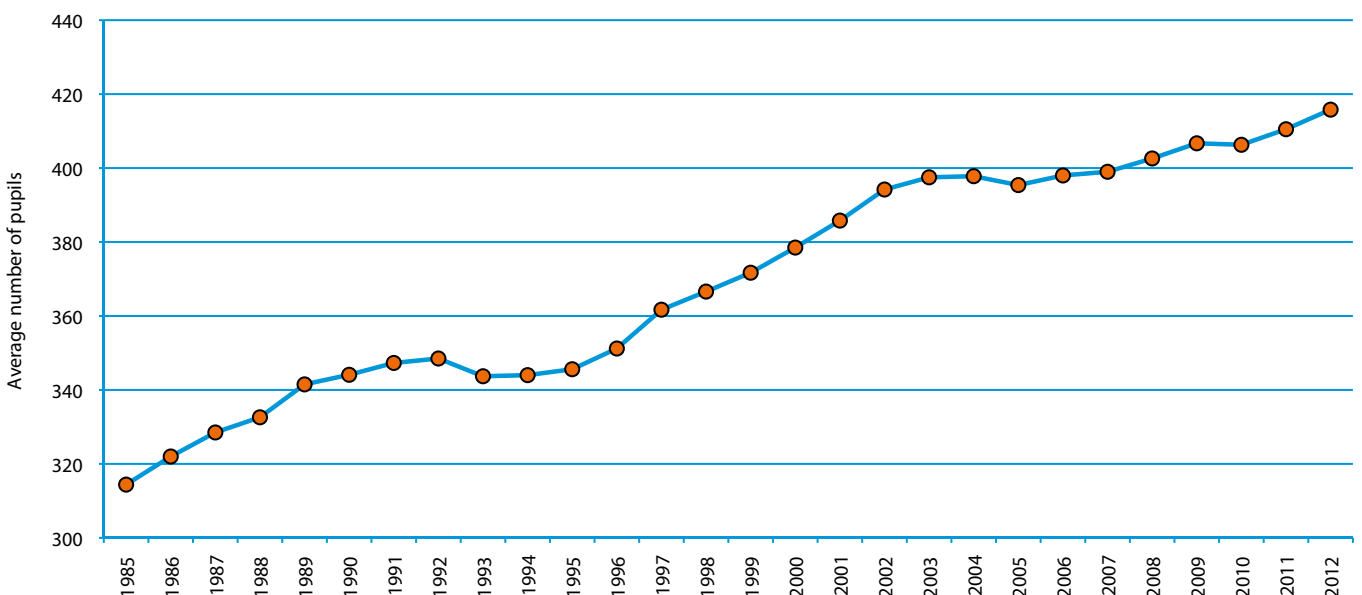


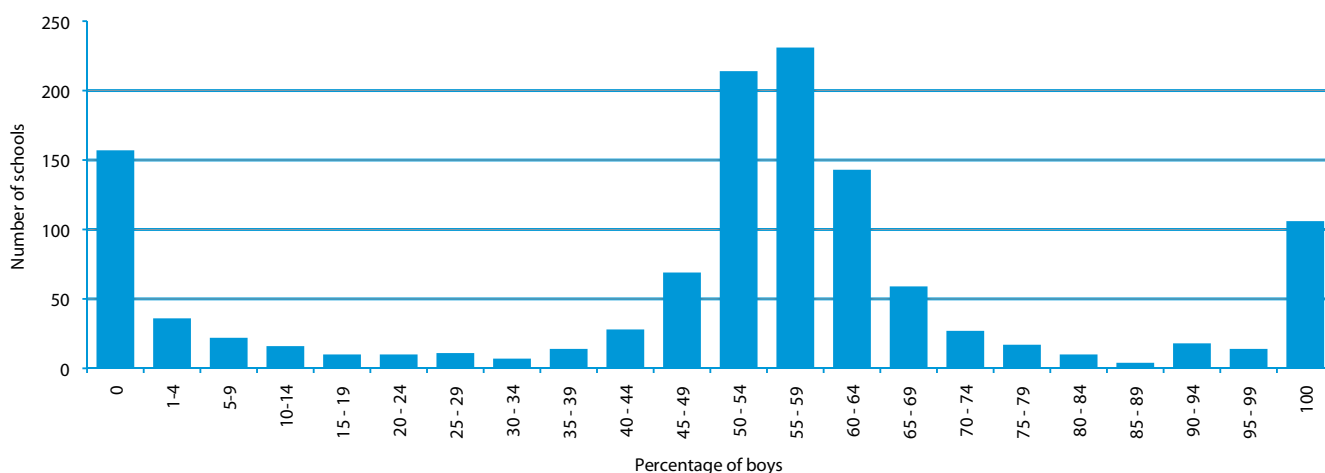
Fig 22. Mean school size from 1985 to 2012



Single-Sex and Co-Education

Most ISC schools have both boys and girls as pupils, although 21.5% are entirely single-sex. As Figure 23 shows, in addition to those schools that are entirely single-sex, there are many others that are predominantly single-sex. Single-sex girls' schools are more common than single-sex boys' schools; co-ed schools tend to have slightly more boys than girls.

Fig 23. Boys as a percentage of all pupils



Co-education is very common at Nursery level where almost 90% of ISC schools have both boys and girls in the year-group. As children get older, single-sex education becomes more common, reaching a peak between Years 7 and 11 where 40% to 43% of ISC schools have either all boys or all girls. Sixth-forms are more likely to be co-ed, although it is still the case that almost 40% of sixth-forms at ISC schools comprise either all girls or all boys. Among single-sex sixth-forms, girls-only education is much more common

than boys-only. Figure 24 demonstrates the changing mix of single-sex and co-education by year-group at ISC schools.

Looking at schools that completed both the 2007 and 2012 Census, there has been a slight shift towards co-education: 13% of the schools that were boys only and 9% of the schools that were girls only in 2007 had become co-educational by the time of the 2012 Census.

Fig 24. Proportion of year-groups that are entirely boys, entirely girls, or have both

Year-group	Number of ISC schools with pupils in each year-group	Percentage of schools where the year-group is entirely boys	Percentage of schools where the year-group is entirely girls	Percentage of schools where the year-group has both boys and girls
Nursery	726	2.6	8.7	88.7
Reception	881	7.7	15.9	76.4
Year 1	900	7.9	17.1	75.0
Year 2	907	7.4	17.4	75.2
Year 3	957	10.3	19.1	70.5
Year 4	968	11.2	20.1	68.7
Year 5	978	11.2	20.4	68.3
Year 6	986	12.0	20.6	67.4
Year 7	834	15.7	22.8	61.5
Year 8	840	17.0	22.7	60.2
Year 9	630	11.7	30.5	57.8
Year 10	625	11.0	30.6	58.4
Year 11	634	11.0	30.4	58.5
Year 12	552	8.9	29.2	62.0
Year 13	573	9.9	28.8	61.3
All Year-groups	1,223	8.7	12.8	78.5

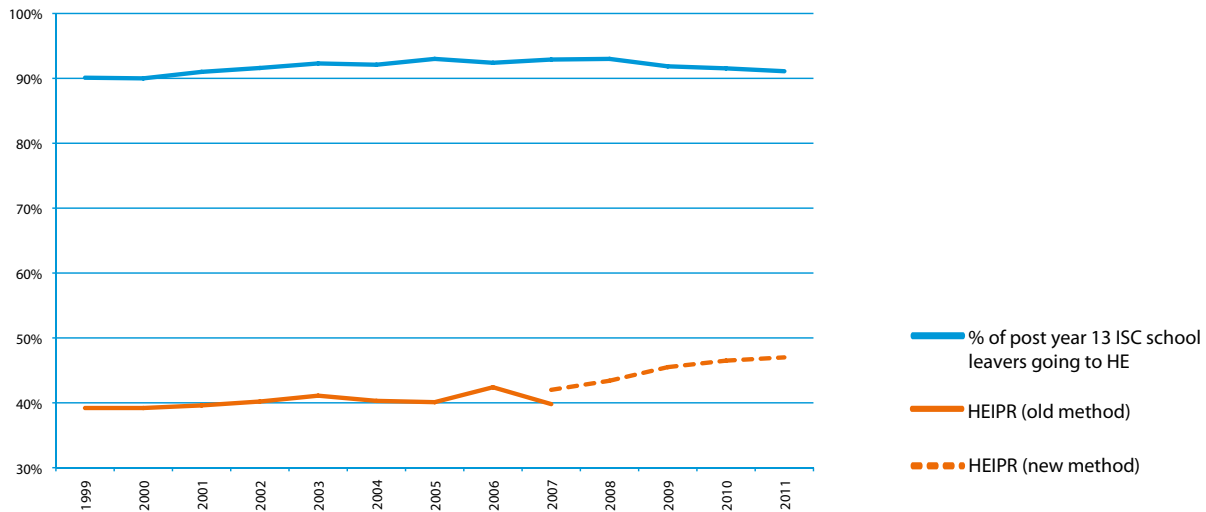
Entrance to Higher Education

The vast majority of independently educated school leavers continue to Higher Education. This year 36,460 post-18 school leavers went on from ISC schools to Higher Education. The proportion of the leaving cohort going on to Higher Education is 91%.

Figure 25 shows the proportion of ISC school leavers going on to Higher Education since 1999. It compares this figure with the Higher Education Initial Participation Rate for all UK adults having experienced some form of Higher Education by the time they turn 30. This underlines how much more likely pupils at ISC schools are to go on to Higher Education than their peers.

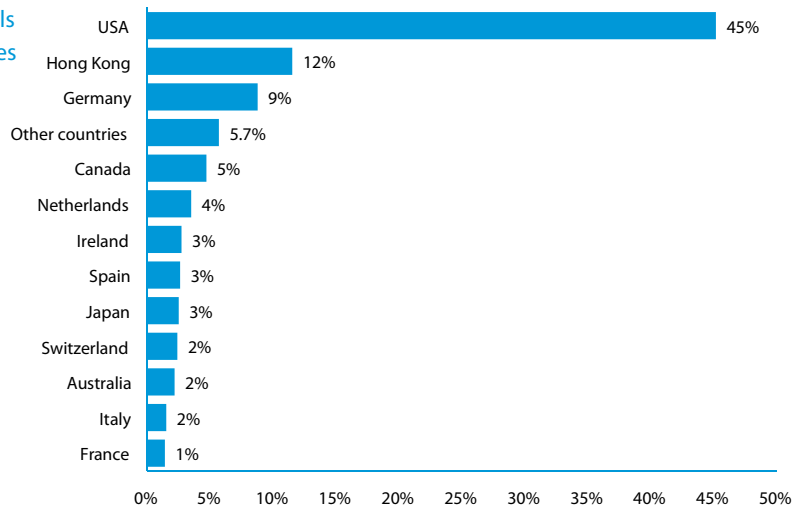
Among pupils going to university, 2.8% chose to go beyond the UK. 27% of schools reported an increase in the number of pupils going to overseas universities, while only 8% reported a decrease. The USA was the most popular destination attracting 45% of ISC pupils going to overseas universities, the next most popular was Hong Kong, attracting 12%. ISC pupils went on to a wide range of overseas universities, with almost 400 different overseas institutions attracting ISC pupils.

Fig 25. Post-18 school-leavers going on to Higher Education



This graph shows the proportion of ISC pupils entering Higher Education each year from 2000-2011. The year given reflects the year pupils left their school, rather than the year that the figure was published in the Census, meaning that the most recent figure is for 2011. The graph also gives the Higher Education Initial Participation Rate (HEIPR) for each year: this gives the proportion of all UK adults who had experienced some form of Higher Education by the time they turn 30. The method for collecting the HEIPR changed in 2007, hence two sets of figures being given for that year. For more detailed information on the various destinations of post A-level leavers, see Appendix One, Tables 11 & 12, p24 & p25.

Fig 26. Destination of pupils going to non-UK universities



Appendix One

Non-Comparative Tables

Tables in Appendix One show data for the 2012 Census only. These tables frequently break figures down by ISC association. Some schools are in membership of more than one association. In these cases the figures are included in all associations of which the school is in membership.

Table 1. School and pupil numbers

This table gives total school and pupil numbers, including a breakdown by ISC association.

Schools	HMC	SofH	GSA	IAPS	ISA	Total
Charities	246	93	173	490	155	1,007
Other	5	5	2	84	128	216
Total	251	98	175	574	283	1,223
Not For Profit	251	94	174	498	165	1,031
For Profit	0	4	1	76	118	192
Total	251	98	175	574	283	1,223
Pupils						
Boarders (boys)	26,621	4,368	122	9,471	2,520	38,557
Boarders (girls)	13,196	3,124	9,939	6,193	2,146	29,919
Day pupils (boys)	107,057	21,247	4,442	104,845	34,401	220,643
Day pupils (girls)	55,124	15,571	79,912	84,024	32,146	219,353
Total (boys)	133,678	25,615	4,564	114,316	36,921	259,200
Total (girls)	68,320	18,695	89,851	90,217	34,292	249,272
Grand Total	201,998	44,310	94,415	204,533	71,213	508,472

Table 2. Pupil numbers by age

This table gives numbers of pupils in all ISC schools by age, gender and day/boarding.

Age at 31st August 2011	Boarder (boys)	Day pupils (boys)	Boarders (girls)	Day pupils (girls)	Total
0-2	0	4,617	0	4,869	9,486
3	0	7,835	0	8,243	16,078
4	0	10,323	0	10,320	20,643
5	0	10,650	2	10,807	21,459
6	2	10,997	3	11,098	22,100
7	97	12,954	64	12,630	25,745
8	419	13,438	202	12,908	26,967
9	791	13,456	394	13,374	28,015
10	1,139	14,604	704	14,199	30,646
11	2,062	18,136	1,742	17,376	39,316
12	2,642	19,095	2,101	18,563	42,401
13	4,579	18,545	3,253	18,581	44,958
14	5,297	18,448	3,887	19,104	46,736
15	5,887	17,988	4,419	18,454	46,748
16	6,799	14,532	5,666	14,131	41,128
17	6,966	13,563	5,807	13,501	39,837
18	1,613	1,271	1,454	1,008	5,346
19	264	191	221	187	863
Total	38,557	220,643	29,919	219,353	508,472

Table 3. Pupil numbers by year-group

This table gives numbers of pupils in all ISC schools by year-group, gender and day/boarding.

Year-group	Boarders (boys)	Day pupils (boys)	Boarders (girls)	Day pupils (girls)	Total
Nursery	0	12,604	0	13,230	25,834
Reception	0	10,248	0	10,236	20,484
Year 1	0	10,733	2	10,796	21,531
Year 2	1	11,060	2	11,129	22,192
Year 3	98	12,896	69	12,614	25,677
Year 4	415	13,470	196	12,899	26,980
Year 5	799	13,539	392	13,405	28,135
Year 6	1,153	14,597	683	14,208	30,641
Year 7	2,115	17,882	1,787	17,148	38,932
Year 8	2,800	19,168	2,148	18,517	42,633
Year 9	4,863	18,554	3,453	18,599	45,469
Year 10	5,711	18,512	4,152	19,179	47,554
Year 11	5,760	18,001	4,318	18,419	46,498
Year 12	7,724	14,906	6,535	14,397	43,562
Year 13	7,118	14,473	6,182	14,577	42,350
Total	38,557	220,643	29,919	219,353	508,472

Table 4. New pupils by year-group

This table gives number of pupils new to their school this academic year by year-group, gender and day/boarding.

Year-group	Boarders (boys)	Day pupils (boys)	Boarders (girls)	Day pupils (girls)	Total
Nursery	0	7,080	0	7,417	14,497
Reception	0	4,699	0	4,734	9,433
Year 1	0	1,470	1	1,292	2,763
Year 2	1	1,185	1	1,134	2,321
Year 3	56	3,225	34	2,529	5,844
Year 4	218	1,977	74	1,547	3,816
Year 5	192	1,588	126	1,551	3,457
Year 6	251	1,436	167	1,284	3,138
Year 7	774	8,857	1,059	9,601	20,291
Year 8	473	1,889	397	1,601	4,360
Year 9	3,805	4,203	2,087	2,382	12,477
Year 10	1,015	592	1,031	983	3,621
Year 11	518	190	526	226	1,460
Year 12	2,851	1,618	3,315	2,753	10,537
Year 13	200	353	193	343	1,089
Total	10,354	40,362	9,011	39,377	99,104

Table 5. Pupil numbers and fees by region

This table gives the number of pupils and average termly fees by region and type of school.

Region	No. of Schools	Boarders (boys)	Day pupils (boys)	Boarders (Girls)	Day pupils (Girls)	Total Boarders	Total Day pupils	Total pupils	Boarding Fee	Day Fee (Boarding Schools)	Day Fee (Day Schools)	Day Fee (Average)	Overall Average Fee
Scotland	32	1,380	10,883	1,111	10,759	2,491	21,642	24,133	£8,300	£4,758	£3,121	£3,272	£3,791
The North	168	3,210	34,018	2,639	33,535	5,849	67,553	73,402	£8,617	£3,862	£2,944	£3,057	£3,500
Wales	17	642	2,735	424	2,863	1,066	5,598	6,664	£7,679	£4,027	£3,116	£3,422	£4,103
W Midlands	92	2,815	15,904	2,226	15,860	5,041	31,764	36,805	£8,653	£4,402	£3,147	£3,344	£4,071
E Midlands	59	2,629	10,193	1,790	10,562	4,419	20,755	25,174	£8,178	£5,031	£3,431	£3,614	£4,415
East Anglia	152	3,501	27,327	3,109	27,162	6,610	54,489	61,099	£8,346	£4,849	£3,704	£3,889	£4,371
South West	134	7,081	17,883	6,824	18,070	13,905	35,953	49,858	£8,844	£4,697	£3,455	£4,002	£5,353
Greater London	192	1,476	37,669	287	38,968	1,763	76,637	78,400	£9,724	£5,515	£4,425	£4,453	£4,571
South East	359	15,087	55,678	11,312	57,098	26,399	112,776	139,175	£9,139	£5,318	£3,996	£4,293	£5,213
All	1,223	38,557	220,643	29,919	219,353	68,476	439,996	508,472	£8,780	£4,837	£3,620	£3,819	£4,487

Table 6. Fees by age-group

Looking at all ISC schools, this table analyses average termly fees by age-group.

Age group	Boarding fee	Day fee (boarding schools)	Day fee (day schools)	Day fee (Average)	Overall Average fee
Sixth-form	£9,189	£5,614	£3,984	£4,337	£5,913
Senior	£8,708	£5,185	£3,851	£4,124	£4,886
Junior	£6,510	£4,028	£3,456	£3,517	£3,582
Nursery		£2,336	£2,508	£2,486	£2,486
Overall	£8,780	£4,837	£3,620	£3,819	£4,487

Table 7. Contributions to fees (termly values)

Looking at all ISC schools, this table shows the breakdown of contributions to fees by type of contribution.

	HMC (pupils)	HMC (value)	SofH (pupils)	SofH (value)	GSA (pupils)	GSA (value)	IAPS (pupils)	IAPS (value)	ISA (pupils)	ISA (value)	Total (pupils)	Total (value)	% of all pupils
The School	65,999	£111,378,126	16,653	£21,429,546	23,291	£32,288,493	50,619	£56,901,388	17,482	£17,604,356	140,517	£198,535,507	27.6
The School: Means Testing	19,361	£54,735,421	4,404	£9,176,837	7,901	£18,985,683	11,712	£23,291,736	4,456	£6,750,023	39,545	£94,911,144	7.8
The School: Reduction of fees - Eligibility*	23,983	£25,914,746	7,760	£6,016,979	7,428	£5,300,282	28,954	£22,205,126	9,817	£6,600,570	62,624	£54,550,788	12.3
The School: Reduction of fees - Excellence or Performance	27,832	£30,727,959	5,547	£6,235,730	9,747	£8,002,527	12,362	£11,404,526	3,778	£4,253,763	47,339	£49,073,575	9.3
Early Years Funding	2,226	£1,303,086	1,568	£929,705	2,695	£1,790,136	14,294	£8,929,393	6,263	£4,157,503	23,582	£14,935,006	4.6
Local Education Authorities†	257	£916,105	324	£1,823,238	164	£663,435	315	£720,896	1,006	£5,528,884	1,887	£8,824,544	0.4
Government Music and Dance Scheme	360	£2,736,690	638	£4,632,428	0	£0	94	£600,343	223	£1,007,955	1,152	£7,994,447	0.2
All other sources	1,291	£3,024,549	380	£689,051	345	£779,633	845	£1,181,586	252	£446,876	2,636	£5,456,447	0.5
Total	68,028	£119,358,556	19,183	£29,503,967	26,012	£35,521,697	63,989	£68,333,605	24,459	£28,745,573	164,298	£235,745,951	33.2
Number of pupils helped as a % of all pupils	35.6		43.3		28.0		31.4		34.3		33.2		

† Excludes data for schools in the Republic of Ireland, Northern Ireland, the Channel Islands and the Isle of Man

* Includes HM Forces discounts, staff discounts, sibling discounts and clergy discounts

Table 8. Capital spending

This table analyses capital spending for all ISC schools in total and per pupil, including a breakdown by type of expenditure. All figures are annual figures. Total amounts are in millions of pounds. Per-pupil amounts are in pounds.

	HMC	SofH	GSA	IAPS	ISA	Total
Amount spent on new/refurbished boarding accommodation						
Total	41.6	7.2	10.4	9.5	7.2	66.7
Per boarding pupil	1,045	960	1,033	609	1,549	974
Amount spent on new buildings						
Total	143.9	22.6	55.9	101.3	22.2	275.9
Per pupil	713	510	592	495	312	543
Amount spent on Information Technology						
Total	26.8	5.3	13.0	19.5	6.1	57.7
Per pupil	133	119	138	96	86	113
Amount spent on other equipment						
Total	31.8	6.9	10.8	21.6	8.5	65.5
Per pupil	157	155	115	105	120	129
Amount spent on improvements to existing buildings						
Total	86.2	12.1	37.2	54.9	19.0	178.2
Per pupil	427	273	394	268	267	350
Amount spent on improvements to existing equipment						
Total	5.2	3.2	4.1	5.5	3.4	17.2
Per pupil	26	73	43	27	48	34
Total capital spending						
Total	335.5	57.3	131.4	212.4	66.5	661.1
Per pupil	1,661	1,294	1,391	1,038	934	1,300

Table 9. Total number of non-British pupils whose parents live overseas

This table shows the number of British pupils whose parents live abroad or serve in HM Forces. It also shows the number of non-British pupils whose parents live overseas by country/area of residence.

British pupils whose parents:	HMC	SofH	GSA	IAPS	ISA	Total
Live Abroad	2,791	246	856	932	160	4,384
Serve in HM Forces	2,401	720	559	2,380	685	5,611
Non-British pupils whose permanent homes are in:						
France	266	77	58	134	75	548
Germany	1,701	405	125	457	216	2,340
Russia	906	204	137	402	355	1,722
Spain	453	122	235	489	120	1,252
Ireland	38	19	15	14	20	92
Remainder of Europe EEA	1,156	245	181	349	527	2,135
Remainder of Europe non-EEA	425	144	73	158	307	958
Nigeria	390	76	203	174	139	871
Rest of Africa	303	72	80	105	120	600
USA	212	49	99	194	285	760
Rest of North America	39	16	17	17	39	116
Central & South America and Caribbean	225	46	124	76	115	530
Middle East	323	85	78	116	253	740
Hong Kong	3,147	844	1,687	1,486	451	6,064
Mainland China	1,453	773	613	607	973	3,708
Taiwan	80	54	20	19	30	175
Japan	172	65	83	88	127	490
South Korea	215	106	138	177	100	657
Malaysia	197	151	56	49	89	500
Thailand	227	67	120	101	76	529
India	68	11	30	24	46	171
Pakistan, Sri Lanka & Bangladesh	34	15	20	21	37	105
Central Asia	94	46	16	44	134	297
Remainder of Far East	337	153	102	90	202	797
Australasia	71	38	40	42	51	219
Total non-British pupils with parents living overseas	12,532	3,883	4,350	5,433	4,887	26,376
All pupils whose parents live overseas (excl. HM Forces)	15,323	4,129	5,206	6,365	5,047	30,760

Table 10. New pupils from overseas

This table shows the number of new British pupils whose parents live abroad or serve in HM Forces. It also shows the number of new non-British pupils whose parents live overseas by country/area of residence.

British pupils whose parents:	HMC	SofH	GSA	IAPS	ISA	Total
Live Abroad	836	90	226	299	74	1,348
Serve in HM Forces	360	108	82	461	116	992
New non-British pupils whose permanent homes are in:						
France	101	36	21	75	27	236
Germany	954	245	80	256	115	1,322
Russia	411	108	61	186	190	841
Spain	261	77	167	397	64	843
Ireland	14	9	3	9	8	36
Remainder of Europe EEA	488	111	60	154	235	902
Remainder of Europe non-EEA	169	73	24	62	156	408
Nigeria	172	40	72	82	63	372
Rest of Africa	118	30	23	34	52	222
USA	77	28	43	89	85	278
Rest of North America	18	12	6	11	12	53
Central & South America and Caribbean	108	32	69	42	68	286
Middle East	115	39	30	49	123	302
Hong Kong	998	280	508	503	193	1,966
Mainland China	622	362	259	277	496	1,696
Taiwan	27	17	9	7	22	68
Japan	53	31	25	33	52	177
South Korea	62	37	33	53	61	223
Malaysia	76	74	21	17	57	230
Thailand	80	35	36	41	52	213
India	24	5	14	6	10	55
Pakistan, Sri Lanka & Bangladesh	12	6	8	6	9	32
Central Asia	47	15	1	14	66	127
Remainder of Far East	105	59	25	30	80	276
Australasia	29	13	18	18	18	88
Total non-British pupils with parents living overseas	5,141	1,774	1,616	2,451	2,314	11,252
All pupils whose parents live overseas (excl. HM Forces)	5,977	1,864	1,842	2,750	2,388	12,600

Table 11. Destinations of post-18 school leavers

This table shows the percentage of school leavers in all ISC schools arriving at various destinations post-18.

	HMC	SofH	GSA	ISA	Total
% to Higher Education (inc. university)	91.7	85.3	94.5	86.4	91.1
% to university	89.6	81.7	92.0	81.7	88.7
% to re-take A-levels in the independent sector	1.5	0.9	1.0	1.6	1.4
% to re-take A-levels in the maintained sector	0.3	0.3	0.4	0.1	0.3
% to Further Education or training	1.1	2.6	1.0	2.0	1.2
% to employment	1.8	5.0	1.2	3.3	2.0
% others	3.7	5.8	2.0	6.5	3.9
Total number recorded	26,294	4,272	17,014	3,587	40,004

Table 12. Destination of pupils going to non-UK universities

	HMC	SofH	GSA	ISA	Total
USA	225	21	79	82	411
Hong Kong	38	14	48	10	105
Unknown	52	9	2	29	83
Germany	55	22	4	3	80
Other countries	19	6	11	9	45
Canada	25	1	12	6	43
Netherlands	18	7	5	7	32
Ireland	16	1	8	0	25
Spain	12	1	8	3	24
Japan	5	2	8	8	23
Switzerland	14	4	1	3	22
Australia	9	3	7	1	20
Italy	6	1	3	5	14
France	6	2	4	1	13
Czech Republic	7	0	1	0	8
Poland	3	1	2	3	8
Republic of Korea	4	2	1	1	8
Austria	5	3	0	0	7
South Africa	5	0	0	2	7
China	4	0	2	0	5
India	1	2	3	0	5
Egypt	1	0	1	2	4
Total number recorded	530	102	210	175	992

Table 13. Size of schools

This table shows all ISC schools by number of pupils and shows how many schools fall into various size brackets.

Number of pupils	HMC	SofH	GSA	IAPS	ISA	Total
5-50	0	0	0	1	3	4
51 - 100	0	1	0	22	37	60
101 - 150	1	3	4	62	56	124
151 - 200	0	4	9	78	52	141
201 - 250	0	4	9	73	33	115
251 - 300	4	7	12	71	19	107
301 - 350	4	8	17	64	24	103
351 - 400	7	13	22	52	16	96
401 - 450	11	18	16	31	11	77
451 - 500	10	10	7	23	6	49
501 - 550	17	8	7	14	10	46
551 - 600	18	2	9	6	2	34
601 - 650	15	5	12	14	4	37
651 - 700	17	6	6	7	2	29
701 - 750	24	1	7	7	1	32
751 - 800	9	1	7	4	0	17
801 - 850	19	1	1	8	2	25
851 - 900	17	4	8	9	1	27
901 - 950	10	0	8	2	1	19
951 - 1000	12	1	2	2	1	15
1001 - 1050	9	0	2	2	0	11
1051 - 1100	5	0	4	5	0	9
1101 - 1150	10	1	1	4	0	11
1151 - 1200	3	0	2	2	1	4
1201 - 1250	8	0	0	3	0	8
1251 - 1300	3	0	0	2	0	3
1301 - 1350	3	0	1	0	0	4
1351 - 1400	3	0	0	2	1	4
1401 - 1450	1	0	0	0	0	1
1451 - 1500	2	0	0	1	0	2
1501 - 1550	2	0	1	1	0	2
1551 - 1600	1	0	0	0	0	1
1601 - 1650	2	0	0	0	0	2
1651 - 1700	0	0	0	0	0	0
1701 - 2350	4	0	1	2	0	4
Total	251	98	175	574	283	1,223

Table 14. Boarders as a percentage of all pupils

This table shows all ISC schools grouped by percentage of boarders.

% Boarders	HMC	SofH	GSA	IAPS	ISA	Total
0	102	34	105	347	231	734
1-4	9	2	3	32	5	44
5-9	11	6	7	45	10	69
10-14	12	3	8	36	1	52
15 - 19	13	14	11	33	3	58
20 - 24	10	6	5	16	7	35
25 - 29	11	3	5	16	4	33
30 - 34	5	5	1	9	3	20
35 - 39	8	6	2	5	1	16
40 - 44	4	2	9	5	5	21
45 - 49	9	1	3	7	1	21
50 - 54	6	1	1	2	1	10
55 - 59	8	1	1	5	1	15
60 - 64	8	1	2	3	0	13
65 - 69	3	2	2	1	4	10
70 - 74	4	3	0	1	0	8
75 - 79	9	0	3	0	0	12
80 - 84	8	1	1	5	1	15
85 - 89	1	2	0	3	1	7
90 - 94	4	3	2	0	1	10
95 - 99	2	1	2	1	1	8
100	4	1	2	2	2	12
Total	251	98	175	574	283	1,223

Table 15. Boys as a percentage of all pupils

This table shows all ISC schools grouped by percentage of boys.

% Boys	HMC	SofH	GSA	IAPS	ISA	Total
0	1	1	122	41	14	157
1-4	0	1	22	14	4	36
5-9	0	1	9	15	1	22
10-14	1	0	12	6	2	16
15 - 19	0	0	3	2	5	10
20 - 24	0	2	2	6	3	10
25 - 29	0	1	0	4	7	11
30 - 34	0	1	1	4	2	7
35 - 39	0	4	0	6	4	14
40 - 44	0	3	1	10	15	28
45 - 49	8	7	1	38	23	69
50 - 54	52	17	0	97	76	214
55 - 59	60	21	2	126	55	231
60 - 64	44	17	0	66	35	143
65 - 69	21	4	0	27	8	59
70 - 74	7	4	0	17	5	27
75 - 79	3	4	0	5	9	17
80 - 84	3	1	0	3	3	10
85 - 89	1	1	0	3	1	4
90 - 94	10	4	0	7	1	18
95 - 99	2	1	0	9	4	14
100	38	3	0	68	6	106
Total	251	98	175	574	283	1,223

Table 16. Teacher numbers

This table shows the number of teachers in all ISC schools.

Full-time	HMC	SofH	GSA	IAPS	ISA	Total
Men	11,380	2,015	1,878	6,826	1,924	19,649
Women	8,319	2,295	6,497	11,146	3,915	26,660
Total	19,699	4,310	8,375	17,972	5,839	46,309
Part-time						
Men	1,174	378	448	911	640	3,035
Women	3,313	1,247	3,393	4,863	2,384	12,793
Total	4,487	1,625	3,841	5,774	3,024	15,828
Part-time hours						
Men	17,019	5,108	6,160	13,811	9,117	43,165
Women	54,020	20,009	52,381	84,552	39,004	207,244
Total	71,038	25,118	58,540	98,363	48,120	250,409
Overall full-time equivalent (32.5 hours = 1 full-time)						
Men	11,904	2,172	2,068	7,251	2,205	20,977
Women	9,981	2,911	8,109	13,748	5,115	33,037
Total	21,885	5,083	10,176	20,999	7,320	54,014

Table 17. Teaching assistant numbers

This table shows the number of teaching assistants in all ISC schools.

Full-time	HMC	SofH	GSA	IAPS	ISA	Total
Men	113	38	15	257	102	470
Women	431	258	372	2,444	826	3,805
Total	544	296	387	2,701	928	4,275
Part-time						
Men	86	19	12	86	40	216
Women	585	308	501	2,334	840	3,882
Total	671	327	513	2,420	880	4,098
Part-time hours						
Men	1,403	329	292	1,456	712	3,672
Women	10,008	5,726	9,598	45,419	15,764	73,745
Total	11,410	6,055	9,890	46,875	16,476	77,417
Overall full-time equivalent (32.5 hours = 1 full-time)						
Men	156	48	24	302	124	583
Women	739	434	667	3,842	1,311	6,074
Total	895	482	691	4,143	1,435	6,657

Table 18. Pupil-teacher ratios

This table shows the pupil-teacher ratio in ISC schools. Where sixth-form weighting has been applied, each sixth-former has been counted as two.

Pupils	HMC	SofH	GSA	IAPS	ISA	Total
Boys	133,678	25,615	4,564	114,316	36,921	259,200
Girls	68,320	18,695	89,851	90,217	34,292	249,272
Total	201,998	44,310	94,415	204,533	71,213	508,472
Gender ratios						
Boys:girls (pupils)	2.0:1	1.4:1	0.1:1	1.3:1	1.1:1	1.0:1
Men:women (teachers)	1.2:1	0.7:1	0.3:1	0.5:1	0.4:1	0.6:1
Men:women (teaching assistants)	0.2:1	0.1:1	0.0:1	0.1:1	0.1:1	0.1:1
Pupil-teacher ratios						
Raw	9.2:1	8.7:1	9.3:1	9.7:1	9.7:1	9.4:1
With sixth-form weighting	11.8:1	10.6:1	11.0:1	10.4:1	10.8:1	11.0:1

Table 19. Changes to full-time teachers

Looking at all ISC schools, this table shows the number of full-time teachers coming into ISC schools (broken down by previous occupation) and leaving ISC schools (broken down by destination).

Arriving from	HMC	SofH	GSA	IAPS	ISA	Total
Independent Schools	738	143	444	943	251	2,042
Maintained Schools	555	185	340	589	253	1,573
ITT at university or training college	304	55	116	184	61	592
New graduates	222	60	55	196	67	476
Industry	105	19	23	61	27	200
Other	365	131	244	530	184	1,167
Total	2,289	593	1,222	2,503	843	6,050
Going to						
Independent schools	656	113	362	686	172	1,640
Maintained schools	130	78	92	131	73	418
Industry	68	10	20	53	33	169
Other (incl. retirement)	1,160	317	809	1,467	554	3,568
Total	2,014	518	1,283	2,337	832	5,795
Net gain						
Independent schools	82	30	82	257	79	402
Maintained schools	425	107	248	458	180	1,155
Industry	37	9	3	8	-6	31
Other	-795	-186	-565	-937	-370	-2,401
Total	275	75	-61	166	11	255
Full-time staff						
Turnover as % of full-time teachers	10.2	12.0	15.3	13.0	14.2	12.5
Gain as % of full-time teachers	1.4	1.7	-0.7	0.9	0.2	0.6
Total	19,699	4,310	8,375	17,972	5,839	46,309

Table 20. SEN pupils

Looking at all ISC schools, this table shows the numbers of pupils who have been identified with specific SEN.

Types of SEN	Number of Pupils*	%
Dyslexia	33,218	52.0
Other Unspecified	7,964	12.5
Dyspraxia	5,820	9.1
Information Processing	5,634	8.8
Speech & Language	3,550	5.6
Gross & Fine Motor Skills	2,881	4.5
Moderate Learning Difficulties (MLDs)	2,866	4.5
Autism Spectrum Disorder or Asperger's Syndrome	2,667	4.2
Dyscalculia	1,903	3.0
Attention Deficit Hyperactivity Disorder (ADHD)	1,461	2.3
Emotional Difficulties	1,434	2.2
Hearing Impairment	1,233	1.9
Attention Deficit Disorder (ADD)	1,176	1.8
Visual Impairment	875	1.4
Behavioural Difficulties	696	1.1
Epilepsy	565	0.9
Cerebral Palsy	240	0.4
Tourette's	111	0.2
Severe Learning Difficulties (SLDs)	93	0.1
Profound & Multiple Learning Difficulties (PMLD)	72	0.1
Down's Syndrome	22	0.0
Total	63,859	

* Some pupils have more than one SEN: they are counted under each individual category of SEN, but are counted only once in the total.

Appendix Two Comparative Tables

Tables in Appendix Two show comparative figures for the 1,209 schools that participated in the Census in both 2011 and 2012. Please note that this comparative sample will differ from that reported in the 2011 Census. In each table the 2012 figures are printed in bold and the 2011 figures are printed in italic. Figures highlighted in yellow show the percentage change between the two years. Where schools are in more than one association the figures are included in all associations of which the school is in membership.

Table 1. School and pupil numbers

This table gives total school and pupil numbers for schools that participated in the Census in both 2011 and 2012, including a breakdown by ISC association.

	HMC	SofH	GSA	IAPS	ISA	Total
Number of schools	250	98	174	569	276	1,209
Pupils						
Boarders (boys)	26,555	4,368	122	9,372	2,342	38,280
	<i>26,587</i>	<i>4,260</i>	<i>108</i>	<i>9,327</i>	<i>2,310</i>	<i>38,236</i>
	-0.1%	2.5%	13.0%	0.5%	1.4%	0.1%
Boarders (girls)	13,138	3,124	9,898	6,109	2,010	29,647
	<i>13,066</i>	<i>3,161</i>	<i>9,998</i>	<i>6,310</i>	<i>1,991</i>	<i>29,833</i>
	0.6%	-1.2%	-1.0%	-3.2%	1.0%	-0.6%
Day pupils (boys)	106,853	21,247	4,437	104,245	34,004	219,574
	<i>106,663</i>	<i>21,228</i>	<i>4,470</i>	<i>103,875</i>	<i>33,765</i>	<i>218,799</i>
	0.2%	0.1%	-0.7%	0.4%	0.7%	0.4%
Day pupils (girls)	54,924	15,571	78,915	83,447	31,870	217,448
	<i>54,113</i>	<i>15,820</i>	<i>80,080</i>	<i>82,250</i>	<i>32,239</i>	<i>217,356</i>
	1.5%	-1.6%	-1.5%	1.5%	-1.1%	0.0%
Total (boys)	133,408	25,615	4,559	113,617	36,346	257,854
	<i>133,250</i>	<i>25,488</i>	<i>4,578</i>	<i>113,202</i>	<i>36,075</i>	<i>257,035</i>
	0.1%	0.5%	-0.4%	0.4%	0.8%	0.3%
Total (girls)	68,062	18,695	88,813	89,556	33,880	247,095
	<i>67,179</i>	<i>18,981</i>	<i>90,078</i>	<i>88,560</i>	<i>34,230</i>	<i>247,189</i>
	1.3%	-1.5%	-1.4%	1.1%	-1.0%	-0.0%
Grand Total	201,470	44,310	93,372	203,173	70,226	504,949
	<i>200,429</i>	<i>44,469</i>	<i>94,656</i>	<i>201,762</i>	<i>70,305</i>	<i>504,224</i>
	0.5%	-0.4%	-1.4%	0.7%	-0.1%	0.1%

Table 2. Pupil numbers by age

This table gives numbers of pupils in ISC schools that participated in the Census in both 2011 and 2012 by age, gender and day/boarding.

Age on 31/8 of previous year	Boarders (Boys)	Day pupils (Boys)	Boarders (Girls)	Day pupils (Girls)	Total
0-2	0	4,561	0	4,802	9,363
	0	4,367	0	4,550	8,917
	0.0%	4.4%	0.0%	5.5%	5.0%
3	0	7,746	0	8,121	15,867
	0	7,774	0	7,755	15,529
	0.0%	-0.4%	0.0%	4.7%	2.2%
4	0	10,213	0	10,235	20,448
	0	9,902	0	10,232	20,134
	0.0%	3.1%	0.0%	0.0%	1.6%
5	0	10,556	2	10,709	21,267
	1	10,344	1	10,511	20,857
	-100.0%	2.0%	100.0%	1.9%	2.0%
6	2	10,913	3	11,011	21,929
	2	11,206	3	11,333	22,544
	0.0%	-2.6%	0.0%	-2.8%	-2.7%
7	97	12,875	64	12,513	25,549
	104	12,617	84	12,159	24,964
	-6.7%	2.0%	-23.8%	2.9%	2.3%
8	418	13,359	201	12,810	26,788
	465	12,524	232	12,518	25,739
	-10.1%	6.7%	-13.4%	2.3%	4.1%
9	787	13,371	392	13,283	27,833
	777	13,824	471	13,606	28,678
	1.3%	-3.3%	-16.8%	-2.4%	-2.9%
10	1,133	14,524	693	14,094	30,444
	1,180	14,892	772	14,265	31,109
	-4.0%	-2.5%	-10.2%	-1.2%	-2.1%
11	2,054	18,070	1,731	17,220	39,075
	2,084	18,518	1,683	17,848	40,133
	-1.4%	-2.4%	2.9%	-3.5%	-2.6%
12	2,633	19,023	2,083	18,393	42,132
	2,723	19,207	2,289	18,619	42,838
	-3.3%	-1.0%	-9.0%	-1.2%	-1.6%
13	4,572	18,491	3,242	18,420	44,725
	4,593	18,456	3,202	18,761	45,012
	-0.5%	0.2%	1.2%	-1.8%	-0.6%
14	5,295	18,398	3,877	18,958	46,528
	5,198	17,966	3,675	18,412	45,251
	1.9%	2.4%	5.5%	3.0%	2.8%
15	5,864	17,940	4,389	18,298	46,491
	5,802	17,943	4,396	18,236	46,377
	1.1%	-0.0%	-0.2%	0.3%	0.2%
16	6,748	14,515	5,625	14,012	40,900
	6,831	14,535	5,709	14,289	41,364
	-1.2%	-0.1%	-1.5%	-1.9%	-1.1%
17	6,897	13,558	5,743	13,394	39,592
	6,667	13,189	5,786	12,835	38,477
	3.4%	2.8%	-0.7%	4.4%	2.9%
18	1,564	1,270	1,415	989	5,238
	1,568	1,351	1,334	1,256	5,509
	-0.3%	-6.0%	6.1%	-21.3%	-4.9%
19	216	191	187	186	780
	241	184	196	171	792
	-10.4%	3.8%	-4.6%	8.8%	-1.5%
Total	38,280	219,574	29,647	217,448	504,949
	38,236	218,799	29,833	217,356	504,224
	0.1%	0.4%	-0.6%	0.0%	0.1%

Table 3. Pupil numbers by year-group

This table gives numbers of pupils in ISC schools that participated in the Census in both 2011 and 2012 by age, gender and day/boarding.

Year-group	Boarders (boys)	Day pupils (boys)	Boarders (girls)	Day pupils (girls)	Total
Nursery	0	12,458	0	13,055	25,513
	0	12,272	0	12,449	24,721
	0.0%	1.5%	0.0%	4.9%	3.2%
Reception	0	10,144	0	10,151	20,295
	0	9,819	0	10,132	19,951
	0.0%	3.3%	0.0%	0.2%	1.7%
Year 1	0	10,632	2	10,708	21,342
	0	10,397	8	10,564	20,969
	0.0%	2.3%	-75.0%	1.4%	1.8%
Year 2	1	10,984	2	11,036	22,023
	3	11,215	1	11,342	22,561
	-66.7%	-2.1%	100.0%	-2.7%	-2.4%
Year 3	98	12,814	69	12,504	25,485
	105	12,627	80	12,173	24,985
	-6.7%	1.5%	-13.8%	2.7%	2.0%
Year 4	414	13,395	195	12,795	26,799
	479	12,585	228	12,558	25,850
	-13.6%	6.4%	-14.5%	1.9%	3.7%
Year 5	796	13,452	390	13,309	27,947
	781	13,894	457	13,572	28,704
	1.9%	-3.2%	-14.7%	-1.9%	-2.6%
Year 6	1,147	14,518	672	14,110	30,447
	1,149	14,852	771	14,317	31,089
	-0.2%	-2.2%	-12.8%	-1.4%	-2.1%
Year 7	2,105	17,814	1,778	17,084	38,781
	2,207	18,817	1,746	17,958	40,728
	-4.6%	-5.3%	1.8%	-4.9%	-4.8%
Year 8	2,786	19,092	2,131	18,344	42,353
	2,886	19,331	2,292	18,693	43,202
	-3.5%	-1.2%	-7.0%	-1.9%	-2.0%
Year 9	4,863	18,507	3,441	18,446	45,257
	4,926	18,442	3,379	18,827	45,574
	-1.3%	0.4%	1.8%	-2.0%	-0.7%
Year 10	5,708	18,462	4,148	19,015	47,333
	5,518	18,038	4,044	18,412	46,012
	3.4%	2.4%	2.6%	3.3%	2.9%
Year 11	5,732	17,943	4,284	18,261	46,220
	5,765	17,909	4,137	18,300	46,111
	-0.6%	0.2%	3.6%	-0.2%	0.2%
Year 12	7,679	14,896	6,494	14,265	43,334
	7,747	14,751	6,787	14,504	43,789
	-0.9%	1.0%	-4.3%	-1.6%	-1.0%
Year 13	6,951	14,463	6,041	14,365	41,820
	6,670	13,850	5,903	13,555	39,978
	4.2%	4.4%	2.3%	6.0%	4.6%
Total	38,280	219,574	29,647	217,448	504,949
	38,236	218,799	29,833	217,356	504,224
	0.1%	0.4%	-0.6%	0.0%	0.1%

Table 4. New pupil numbers by year-group

This table gives numbers of pupils in ISC schools that participated in the Census in both 2011 and 2012 by year-group, gender and day/boarding.

Year-group	Boarders (boys)	Day pupils (boys)	Boarders (girls)	Day pupils (girls)	Total
Nursery	0	6,995	0	7,322	14,317
	0	6,208	0	6,362	12,570
	0.0%	12.7%	0.0%	15.1%	13.9%
Reception	0	4,660	0	4,691	9,351
	0	4,459	0	4,474	8,933
	0.0%	4.5%	0.0%	4.9%	4.7%
Year 1	0	1,437	1	1,262	2,700
	0	1,408	4	1,321	2,733
	0.0%	2.1%	-75.0%	-4.5%	-1.2%
Year 2	1	1,175	1	1,122	2,299
	1	1,092	0	1,089	2,182
	0.0%	7.6%	0.0%	3.0%	5.4%
Year 3	56	3,217	34	2,513	5,820
	94	3,054	61	2,376	5,585
	-40.4%	5.3%	-44.3%	5.8%	4.2%
Year 4	218	1,962	74	1,536	3,790
	250	1,657	112	1,410	3,429
	-12.8%	18.4%	-33.9%	8.9%	10.5%
Year 5	190	1,575	126	1,545	3,436
	218	1,452	150	1,607	3,427
	-12.8%	8.5%	-16.0%	-3.9%	0.3%
Year 6	251	1,427	166	1,270	3,114
	265	1,347	186	1,260	3,058
	-5.3%	5.9%	-10.8%	0.8%	1.8%
Year 7	774	8,844	1,059	9,586	20,263
	992	9,138	1,147	10,242	21,519
	-22.0%	-3.2%	-7.7%	-6.4%	-5.8%
Year 8	472	1,884	393	1,465	4,214
	405	1,554	405	1,348	3,712
	16.5%	21.2%	-3.0%	8.7%	13.5%
Year 9	3,805	4,201	2,081	2,373	12,460
	3,971	4,100	2,048	2,336	12,455
	-4.2%	2.5%	1.6%	1.6%	0.0%
Year 10	1,013	592	1,029	973	3,607
	909	556	970	803	3,238
	11.4%	6.5%	6.1%	21.2%	11.4%
Year 11	495	190	504	215	1,404
	448	215	453	271	1,387
	10.5%	-11.6%	11.3%	-20.7%	1.2%
Year 12	2,825	1,617	3,289	2,751	10,482
	2,878	1,794	3,551	2,966	11,189
	-1.8%	-9.9%	-7.4%	-7.2%	-6.3%
Year 13	102	353	126	339	920
	85	342	76	311	814
	20.0%	3.2%	65.8%	9.0%	13.0%
Total	10,202	40,129	8,883	38,963	98,177
	10,516	38,376	9,163	38,176	96,231
	-3.0%	4.6%	-3.1%	2.1%	2.0%

Table 5. Pupil numbers and fees by region

Looking at ISC schools that participated in the Census in both 2011 and 2012, this table gives the number of pupils and average termly fees by region and type of school.

Region	No. of Schools	Boarders (boys)	Day pupils (boys)	Boarders (Girls)	Day pupils (Girls)	Total Boarders	Total Day pupils	Total Pupils	Boarding Fee	Day Fee (Boarding Schools)	Day Fee (Day Schools)	Day Fee (Average)	Overall Average Fee
Scotland	30	1,281	10,522	1,027	10,449	2,308	20,971	23,279	£8,348	£5,288	£3,116	£3,254	£3,759
	30	1,327	10,545	1,011	10,561	2,338	21,106	23,444	£7,986	£4,879	£3,045	£3,164	£3,645
		-3.5%	-0.2%	1.6%	-1.1%	-1.3%	-0.6%	-0.7%	4.5%	8.4%	2.4%	2.8%	3.1%
The North	165	3,210	33,909	2,639	33,346	5,849	67,255	73,104	£8,617	£3,862	£2,948	£3,061	£3,505
	165	3,096	34,533	2,707	33,928	5,803	68,461	74,264	£8,088	£3,776	£2,839	£2,954	£3,355
		3.7%	-1.8%	-2.5%	-1.7%	0.8%	-1.8%	-1.6%	6.5%	2.3%	3.8%	3.6%	4.5%
Wales	17	642	2,735	424	2,863	1,066	5,598	6,664	£7,679	£4,027	£3,116	£3,422	£4,103
	17	621	2,785	455	2,935	1,076	5,720	6,796	£7,460	£3,890	£2,955	£3,271	£3,934
		3.4%	-1.8%	-6.8%	-2.5%	-0.9%	-2.1%	-1.9%	2.9%	3.5%	5.4%	4.6%	4.3%
W Midlands	91	2,815	15,809	2,226	15,837	5,041	31,646	36,687	£8,653	£4,402	£3,135	£3,335	£4,066
	91	2,820	15,886	2,197	15,929	5,017	31,815	36,832	£8,328	£4,179	£3,015	£3,191	£3,891
		-0.2%	-0.5%	1.3%	-0.6%	0.5%	-0.5%	-0.4%	3.9%	5.3%	4.0%	4.5%	4.5%
E Midlands	58	2,629	10,129	1,790	10,503	4,419	20,632	25,051	£8,178	£5,031	£3,405	£3,592	£4,401
	58	2,655	10,210	1,783	10,710	4,438	20,920	25,358	£7,845	£4,974	£3,266	£3,439	£4,210
		-1.0%	-0.8%	0.4%	-1.9%	-0.4%	-1.4%	-1.2%	4.2%	1.1%	4.2%	4.5%	4.5%
East Anglia	152	3,501	27,327	3,109	27,162	6,610	54,489	61,099	£8,346	£4,849	£3,704	£3,889	£4,371
	152	3,546	27,266	3,275	27,012	6,821	54,278	61,099	£7,865	£4,650	£3,546	£3,747	£4,198
		-1.3%	0.2%	-5.1%	0.6%	-3.1%	0.4%	0.0%	6.1%	4.3%	4.4%	3.8%	4.1%
South West	133	7,081	17,816	6,813	18,015	13,894	35,831	49,725	£8,847	£4,697	£3,453	£4,003	£5,357
	133	7,233	17,644	6,839	18,177	14,072	35,821	49,893	£8,455	£4,671	£3,301	£3,842	£5,143
		-2.1%	1.0%	-0.4%	-0.9%	-1.3%	0.0%	-0.3%	4.6%	0.6%	4.6%	4.2%	4.1%
Greater London	190	1,476	37,484	287	38,798	1,763	76,282	78,045	£9,724	£5,515	£4,427	£4,455	£4,574
	190	1,457	37,064	264	38,237	1,721	75,301	77,022	£9,395	£5,367	£4,201	£4,232	£4,348
		1.3%	1.1%	8.7%	1.5%	2.4%	1.3%	1.3%	3.5%	2.8%	5.4%	5.3%	5.2%
South East	356	14,909	55,495	11,176	56,996	26,085	112,491	138,576	£9,134	£5,318	£3,995	£4,293	£5,204
	356	14,751	54,662	11,148	56,386	25,899	111,048	136,947	£8,749	£5,117	£3,804	£4,113	£4,990
		1.1%	1.5%	0.3%	1.1%	0.7%	1.3%	1.2%	4.4%	3.9%	5.0%	4.4%	4.3%
All	1,209	38,280	219,574	29,647	217,448	67,927	437,022	504,949	£8,776	£4,848	£3,625	£3,825	£4,491
	1,209	38,236	218,799	29,833	217,356	68,069	436,155	504,224	£8,385	£4,707	£3,457	£3,661	£4,298
		0.1%	0.4%	-0.6%	0.0%	-0.2%	0.2%	0.1%	4.7%	3.0%	4.9%	4.5%	4.5%

Table 6. Fees by school type and age-group

Looking at ISC schools that participated in the Census in both 2011 and 2012, this table shows termly fees at different types of school and for different age-groups.

	Boarding fee	Day fee (boarding schools)	Day fee (day schools)	Day fee (Average)	Overall Average fee
Sixth-form	£9,184	£5,622	£4,000	£4,351	£5,909
	£8,782	£5,430	£3,802	£4,158	£5,647
	4.6%	3.5%	5.2%	4.6%	4.6%
Senior	£8,706	£5,196	£3,863	£4,136	£4,898
	£8,349	£5,038	£3,684	£3,961	£4,688
	4.3%	3.1%	4.8%	4.4%	4.5%
Junior	£6,517	£4,032	£3,452	£3,513	£3,579
	£6,158	£3,942	£3,294	£3,362	£3,430
	5.8%	2.3%	4.8%	4.5%	4.3%
Nursery		£2,330	£2,497	£2,476	£2,476
		£2,219	£2,363	£2,345	£2,345
		5.0%	5.7%	5.6%	5.6%
Overall	£8,776	£4,848	£3,625	£3,825	£4,491
	£8,385	£4,707	£3,457	£3,661	£4,298
	4.7%	3.0%	4.9%	4.5%	4.5%

Table 7. Contributions to fees (termly values)

Looking at ISC schools that participated in the Census in both 2011 and 2012, this table shows the breakdown of contributions to fees by type of contribution.

	HMC (pupils)	HMC (value)	SofH (pupils)	SofH (value)	GSA (pupils)	GSA (value)	IAPS (pupils)	IAPS (value)	ISA (pupils)	ISA (value)	Total (pupils)	Total (value)	% of all pupils
The School: Total													
	65,856	£111,230,279	16,653	£21,429,546	23,098	£32,279,498	50,199	£56,434,491	17,347	£17,458,313	139,720	£197,891,972	27.7
	64,266	£102,832,600	17,292	£20,938,070	22,970	£28,764,226	49,598	£52,769,326	17,493	£16,354,902	138,349	£183,457,223	27.4
	2.5%	8.2%	-3.7%	2.3%	0.6%	12.2%	1.2%	6.9%	-0.8%	6.7%	1.0%	7.9%	0.8%
The School: Means Testing													
	19,314	£54,631,877	4,404	£9,176,837	7,856	£18,979,203	11,611	£23,036,533	4,429	£6,705,993	39,370	£94,604,031	7.8
	19,417	£50,196,591	5,285	£9,906,154	7,504	£15,947,036	11,241	£21,221,573	3,952	£5,867,629	39,027	£86,459,892	7.7
	-0.5%	8.8%	-16.7%	-7.4%	4.7%	19.0%	3.3%	8.6%	12.1%	14.3%	0.9%	9.4%	0.7%
The School: Reduction of fees - Eligibility*													
	23,887	£25,870,443	7,760	£6,016,979	7,283	£5,297,867	28,643	£22,005,818	9,751	£6,552,789	62,056	£54,283,083	12.3
	23,208	£23,313,694	7,589	£5,253,206	7,581	£5,202,111	28,800	£20,104,006	10,410	£6,390,668	62,422	£49,829,908	12.4
	2.9%	11.0%	2.3%	14.5%	-3.9%	1.8%	-0.5%	9.5%	-6.3%	2.5%	-0.6%	8.9%	-0.7%
The School: Reduction of fees - Excellence or Performance													
	27,832	£30,727,959	5,547	£6,235,730	9,744	£8,002,427	12,354	£11,392,141	3,736	£4,199,531	47,285	£49,004,858	9.4
	27,340	£29,322,315	5,702	£5,778,711	9,390	£7,615,078	12,140	£11,443,747	3,902	£4,096,604	46,524	£47,167,424	9.2
	1.8%	4.8%	-2.7%	7.9%	3.8%	5.1%	1.8%	-0.5%	-4.3%	2.5%	1.6%	3.9%	1.5%
Early Years Funding													
	2,226	£1,303,086	1,568	£929,705	2,695	£1,790,136	14,157	£8,841,454	6,107	£4,095,386	23,289	£14,784,950	4.6
	2,342	£1,420,425	1,360	£795,246	2,760	£1,936,217	14,809	£8,808,271	6,306	£4,049,479	24,162	£14,898,007	4.8
	-5.0%	-8.3%	15.3%	16.9%	-2.4%	-7.5%	-4.4%	0.4%	-3.2%	1.1%	-3.6%	-0.8%	-3.8%
Local Education Authorities†													
	257	£916,105	324	£1,823,238	164	£663,435	315	£720,896	884	£4,906,157	1,765	£8,201,817	0.4
	307	£966,131	266	£1,470,437	181	£690,010	173	£473,390	824	£4,803,896	1,609	£7,695,725	0.3
	-16.3%	-5.2%	21.8%	24.0%	-9.4%	-3.9%	82.1%	52.3%	7.3%	2.1%	9.7%	6.6%	9.6%
Government Music and Dance Scheme													
	360	£2,736,690	638	£4,632,428	0	£0	94	£600,343	223	£1,007,955	1,152	£7,994,447	0.2
	352	£2,745,269	614	£4,840,137	0	£0	128	£611,902	201	£904,158	1,114	£8,096,286	0.2
	2.3%	-0.3%	3.9%	-4.3%	0.0%	0.0%	-26.6%	-1.9%	10.9%	11.5%	3.4%	-1.3%	3.3%
All other sources													
	1,289	£3,019,043	380	£689,051	345	£779,633	842	£1,175,880	252	£446,876	2,629	£5,447,901	0.5
	1,124	£2,171,144	467	£1,311,979	509	£952,328	964	£1,551,721	795	£994,253	3,259	£6,022,192	0.6
	14.7%	39.1%	-18.6%	-47.5%	-32.2%	-18.1%	-12.7%	-24.2%	-68.3%	-55.1%	-19.3%	-9.5%	-19.4%
Total													
	67,883	£119,205,203	19,183	£29,503,967	26,012	£35,512,702	63,443	£67,773,064	24,046	£27,914,686	163,286	£234,321,087	33.2
	66,800	£110,135,570	19,322	£29,355,870	26,106	£32,342,781	63,107	£64,214,611	24,607	£27,106,688	163,111	£220,169,433	33.2
	1.6%	8.2%	-0.7%	0.5%	-0.4%	9.8%	0.5%	5.5%	-2.3%	3.0%	0.1%	6.4%	-0.0%
Number of pupils helped as a % of all pupils													
	35.7		43.3		28.0		31.4		34.2		33.2		
	35.3		43.5		27.7		31.4		35.0		33.2		
	1.1%		-0.4%		1.0%		-0.2%		-2.2%		-0.0%		

* Includes HM Forces discounts, staff discounts, sibling discounts and clergy discounts

† Excludes data for schools in Republic of Ireland, Northern Ireland, Channel Islands and the Isle of Man

Table 8. Capital spending

This table provides an analysis of capital spending in total and by pupil in all ISC schools that participated in both the 2011 and 2012 Census. The figures are broken down by type of expenditure and are all annual figures. Total amounts are in millions of pounds; per-pupil amounts are in pounds.

	HMC	SofH	GSA	IAPS	ISA	Total
Amount spent on new/refurbished boarding accommodation						
Total	41.6	7.2	10.4	9.5	7.2	66.6
	49.6	16.4	6.7	15.2	9.5	78.1
	-16.2%	-56.0%	55.2%	-37.7%	-23.7%	-14.7%
Per boarding pupil	1,047.5	960.4	1,037.3	613.2	1,661.1	980.6
	1,250.9	2,203.8	662.7	974.7	2,202.3	1,146.9
	-16.3%	-56.4%	56.5%	-37.1%	-24.6%	-14.5%
Amount spent on new buildings						
Total	143.8	22.6	55.9	96.9	22.2	271.5
	172.6	31.3	47.4	98.8	28.0	285.8
	-16.7%	-27.8%	18.0%	-1.9%	-20.9%	-5.0%
Per pupil	713.7	510.3	598.9	477.2	316.0	537.8
	861.4	704.4	500.9	489.8	398.9	566.8
	-17.1%	-27.6%	19.6%	-2.6%	-20.8%	-5.1%
Amount spent on Information Technology						
Total	26.8	5.3	12.9	19.5	6.0	57.5
	26.3	4.9	11.1	17.9	5.5	54.2
	2.0%	7.0%	16.7%	8.8%	10.2%	6.2%
Per pupil	133.0	119.5	138.6	95.8	86.0	113.9
	131.0	111.3	117.2	88.6	78.0	107.4
	1.5%	7.3%	18.3%	8.1%	10.3%	6.0%
Amount spent on other equipment						
Total	31.7	6.9	10.8	21.5	8.2	64.9
	27.9	4.6	8.9	19.1	6.2	55.9
	13.6%	48.6%	20.7%	12.4%	31.1%	16.1%
Per pupil	157.5	155.0	115.3	105.8	116.2	128.6
	139.4	103.9	94.2	94.8	88.5	111.0
	13.0%	49.2%	22.4%	11.7%	31.2%	15.9%
Amount spent on improvements to existing buildings						
Total	86.0	12.1	37.1	54.6	18.3	177.1
	73.7	10.2	33.4	51.2	13.0	153.1
	16.8%	19.1%	11.1%	6.5%	40.8%	15.7%
Per pupil	426.9	273.1	397.7	268.6	260.3	350.7
	367.6	228.5	352.9	253.9	184.6	303.6
	16.1%	19.5%	12.7%	5.8%	41.0%	15.5%
Amount spent on improvements to existing equipment						
Total	5.0	3.2	4.1	5.3	3.4	17.0
	5.0	1.4	2.3	4.8	2.0	13.5
	-0.3%	138.5%	77.7%	10.2%	74.0%	26.2%
Per pupil	25.0	73.3	43.6	26.3	49.1	33.7
	25.2	30.6	24.2	24.0	28.2	26.8
	-0.8%	139.4%	80.1%	9.4%	74.2%	26.0%
Total capital spending						
Total	334.9	57.3	131.2	207.3	65.3	654.7
	355.2	68.8	109.8	207.1	64.2	640.6
	-5.7%	-16.7%	19.5%	0.1%	1.8%	2.2%
Per pupil	1,662.5	1,293.6	1,405.5	1,020.4	930.5	1,296.6
	1,772.0	1,546.5	1,160.2	1,026.6	912.8	1,270.4
	-6.2%	-16.4%	21.1%	-0.6%	1.9%	2.1%

Table 9. Total number of non-British pupils whose parents live overseas

Looking at schools that participated in the Census in both 2011 and 2012, this table shows the number of non-British pupils whose parents live overseas broken down by country/area of parental residence.

Country	HMC	SofH	GSA	IAPS	ISA	Total
France	263	77	58	130	74	543
	295	66	63	141	70	561
	-10.8%	16.7%	-7.9%	-7.8%	5.7%	-3.2%
Germany	1,647	405	125	403	211	2,281
	1,697	409	128	388	207	2,355
	-2.9%	-1.0%	-2.3%	3.9%	1.9%	-3.1%
Russia	899	204	137	395	335	1,695
	663	152	117	328	266	1,303
	35.6%	34.2%	17.1%	20.4%	25.9%	30.1%
Spain	447	122	232	483	118	1,241
	381	124	224	370	105	1,072
	17.3%	-1.6%	3.6%	30.5%	12.4%	15.8%
Ireland	38	19	15	14	20	92
	38	16	22	18	11	91
	0.0%	18.8%	-31.8%	-22.2%	81.8%	1.1%
Remainder of Europe EEA	1,152	245	181	342	502	2,103
	1,121	244	179	365	482	2,050
	2.8%	0.4%	1.1%	-6.3%	4.1%	2.6%
Remainder of Europe non-EEA	419	144	73	152	291	936
	428	122	57	157	236	849
	-2.1%	18.0%	28.1%	-3.2%	23.3%	10.2%
Nigeria	388	76	203	172	121	851
	324	71	221	154	109	802
	19.8%	7.0%	-8.1%	11.7%	11.0%	6.1%
Rest of Africa	302	72	79	104	118	596
	324	58	93	96	81	590
	-6.8%	24.1%	-15.1%	8.3%	45.7%	1.0%
USA	212	49	99	194	284	759
	206	44	66	170	296	717
	2.9%	11.4%	50.0%	14.1%	-4.1%	5.9%
Rest of North America	39	16	17	17	39	116
	57	17	24	30	40	130
	-31.6%	-5.9%	-29.2%	-43.3%	-2.5%	-10.8%
Central & South America and Caribbean	225	46	124	76	104	519
	236	35	111	93	92	500
	-4.7%	31.4%	11.7%	-18.3%	13.0%	3.8%
Middle East	323	85	78	113	245	729
	325	77	76	137	156	666
	-0.6%	10.4%	2.6%	-17.5%	57.1%	9.5%
Hong Kong	3,141	844	1,670	1,480	399	5,989
	2,945	824	1,736	1,468	397	5,857
	6.7%	2.4%	-3.8%	0.8%	0.5%	2.3%
China	1,443	773	612	597	912	3,636
	1,407	730	573	555	839	3,417
	2.6%	5.9%	6.8%	7.6%	8.7%	6.4%
Taiwan	80	54	20	19	29	174
	70	45	16	20	26	153
	14.3%	20.0%	25.0%	-5.0%	11.5%	13.7%
Japan	170	65	83	86	106	467
	152	57	80	81	112	437
	11.8%	14.0%	3.8%	6.2%	-5.4%	6.9%
South Korea	215	106	138	177	75	632
	228	83	139	234	77	647
	-5.7%	27.7%	-0.7%	-24.4%	-2.6%	-2.3%
Malaysia	196	151	56	48	78	488
	182	121	55	47	44	413
	7.7%	24.8%	1.8%	2.1%	77.3%	18.2%
Thailand	226	67	120	100	74	526
	223	54	94	97	48	476
	1.3%	24.1%	27.7%	3.1%	54.2%	10.5%
India	68	11	30	24	46	171
	71	9	23	42	33	157
	-4.2%	22.2%	30.4%	-42.9%	39.4%	8.9%
Pakistan, Sri Lanka & Bangladesh	34	15	20	21	36	104
	19	17	15	9	33	81
	78.9%	-11.8%	33.3%	133.3%	9.1%	28.4%
Central Asia	94	46	16	44	122	285
	88	36	13	37	132	278
	6.8%	27.8%	23.1%	18.9%	-7.6%	2.5%
Remainder of Far East	337	153	102	90	194	789
	308	146	131	127	177	764
	9.4%	4.8%	-22.1%	-29.1%	9.6%	3.3%
Australasia	70	38	40	41	51	218
	54	33	27	40	34	163
	29.6%	15.2%	48.1%	2.5%	50.0%	33.7%
Total non-British pupils	12,428	3,883	4,328	5,322	4,584	25,940
	11,842	3,590	4,283	5,204	4,103	24,529
	4.9%	8.2%	1.1%	2.3%	11.7%	5.8%

Table 10. New pupils from overseas

Looking at schools that participated in the Census in both 2011 and 2012, this table shows the number of new non-British pupils whose parents live overseas broken down by country/area of parental residence. It also shows the number of new British pupils whose parents serve in HM Forces.

British pupils whose parents:	HMC	SoftH	GSA	IAPS	ISA	Total
Serve in HM Forces	358	108	82	459	116	990
	546	217	156	943	218	1,790
	-34.4%	-50.2%	-47.4%	-51.3%	-46.8%	-44.7%
New non-British pupils whose permanent homes are in:						
France	99	36	21	73	26	233
	105	26	36	78	25	237
	-5.7%	38.5%	-41.7%	-6.4%	4.0%	-1.7%
Germany	930	245	80	232	113	1,296
	1,023	235	74	240	123	1,409
	-9.1%	4.3%	8.1%	-3.3%	-8.1%	-8.0%
Russia	407	108	61	182	178	825
	263	75	54	138	159	595
	54.8%	44.0%	13.0%	31.9%	11.9%	38.7%
Spain	257	77	164	393	62	834
	232	80	171	307	63	750
	10.8%	-3.8%	-4.1%	28.0%	-1.6%	11.2%
Ireland	14	9	3	9	8	36
	15	6	9	6	3	33
	-6.7%	50.0%	-66.7%	50.0%	166.7%	9.1%
Remainder of Europe EEA	486	111	60	151	216	880
	403	105	73	143	263	856
	20.6%	5.7%	-17.8%	5.6%	-17.9%	2.8%
Remainder of Europe non-EEA	167	73	24	60	149	399
	205	57	32	74	129	432
	-18.5%	28.1%	-25.0%	-18.9%	15.5%	-7.6%
Nigeria	171	40	72	81	49	357
	123	22	74	61	54	301
	39.0%	81.8%	-2.7%	32.8%	-9.3%	18.6%
Rest of Africa	117	30	23	33	51	220
	100	24	31	40	40	206
	17.0%	25.0%	-25.8%	-17.5%	27.5%	6.8%
USA	77	28	43	89	84	277
	69	20	36	39	111	254
	11.6%	40.0%	19.4%	128.2%	-24.3%	9.1%
Rest of North America	18	12	6	11	12	53
	12	1	11	4	7	32
	50.0%	1100.0%	-45.5%	175.0%	71.4%	65.6%
Central & South America and Caribbean	108	32	69	42	60	278
	109	23	79	58	52	271
	-0.9%	39.1%	-12.7%	-27.6%	15.4%	2.6%
Middle East	115	39	30	48	121	299
	114	29	15	45	73	237
	0.9%	34.5%	100.0%	6.7%	65.8%	26.2%
Hong Kong	996	280	503	501	156	1,922
	1,032	372	671	555	201	2,243
	-3.5%	-24.7%	-25.0%	-9.7%	-22.4%	-14.3%
Mainland China	617	362	258	272	455	1,649
	646	362	244	265	493	1,684
	-4.5%	0.0%	5.7%	2.6%	-7.7%	-2.1%
Taiwan	27	17	9	7	21	67
	18	12	7	3	15	50
	50.0%	41.7%	28.6%	133.3%	40.0%	34.0%
Japan	51	31	25	31	45	168
	45	21	22	34	51	158
	13.3%	47.6%	13.6%	-8.8%	-11.8%	6.3%
South Korea	62	37	33	53	40	202
	44	32	27	72	50	193
	40.9%	15.6%	22.2%	-26.4%	-20.0%	4.7%
Malaysia	75	74	21	16	48	220
	71	60	20	15	12	170
	5.6%	23.3%	5.0%	6.7%	300.0%	29.4%
Thailand	80	35	36	41	51	212
	70	22	39	48	29	186
	14.3%	59.1%	-7.7%	-14.6%	75.9%	14.0%
India	24	5	14	6	10	55
	24	4	8	12	18	60
	0.0%	25.0%	75.0%	-50.0%	-44.4%	-8.3%
Pakistan, Sri Lanka & Bangladesh	12	6	8	6	8	31
	7	9	7	6	16	37
	71.4%	-33.3%	14.3%	0.0%	-50.0%	-16.2%
Central Asia	47	15	1	14	59	120
	19	20	5	8	74	118
	147.4%	-25.0%	-80.0%	75.0%	-20.3%	1.7%
Remainder of Far East	105	59	25	30	76	272
	108	77	57	59	75	305
	-2.8%	-23.4%	-56.1%	-49.2%	1.3%	-10.8%
Australasia	29	13	18	18	18	88
	25	14	8	20	14	74
	16.0%	-7.1%	125.0%	-10.0%	28.6%	18.9%
Total new non-British pupils	5,091	1,774	1,607	2,399	2,116	10,993
	4,882	1,708	1,810	2,330	2,150	10,891
	4.3%	3.9%	-11.2%	3.0%	-1.6%	0.9%

Table 11. Teacher numbers

This table shows the number of teachers in those ISC schools that participated in the Census in 2011 and 2012.

Full-time	HMC	SofH	GSA	IAPS	ISA	Total
Men	11,364	2,015	1,865	6,787	1,914	19,582
	11,407	2,037	1,852	6,819	1,915	19,633
	-0.4%	-1.1%	0.7%	-0.5%	-0.1%	-0.3%
Women	8,286	2,295	6,454	11,059	3,865	26,469
	8,073	2,230	6,535	10,997	3,859	26,294
	2.6%	2.9%	-1.2%	0.6%	0.2%	0.7%
Total	19,650	4,310	8,319	17,846	5,779	46,051
	19,480	4,267	8,387	17,816	5,774	45,927
	0.9%	1.0%	-0.8%	0.2%	0.1%	0.3%
Overall full-time equivalent (32.5 hours = 1 full-time)						
Men	11,882	2,172	2,054	7,203	2,194	20,900
	11,999	2,223	2,073	7,307	2,210	21,120
	-1.0%	-2.3%	-0.9%	-1.4%	-0.8%	-1.0%
Women	9,933	2,911	8,059	13,638	5,056	32,806
	9,713	2,862	8,122	13,636	5,066	32,734
	2.3%	1.7%	-0.8%	0.0%	-0.2%	0.2%
Total	21,815	5,083	10,113	20,841	7,250	53,707
	21,712	5,085	10,195	20,942	7,277	53,854
	0.5%	-0.0%	-0.8%	-0.5%	-0.4%	-0.3%

Table 12. Teaching assistant numbers

This table shows the number of teaching assistants in those ISC schools that participated in the Census in 2011 and 2012.

Full-time	HMC	SofH	GSA	IAPS	ISA	Total
Men	113	38	15	257	99	466
	71	20	5	196	81	337
	59.2%	90.0%	200.0%	31.1%	22.2%	38.3%
Women	431	258	366	2,430	807	3,765
	432	250	396	2,367	709	3,603
	-0.2%	3.2%	-7.6%	2.7%	13.8%	4.5%
Total	544	296	381	2,687	906	4,231
	503	270	401	2,563	790	3,940
	8.2%	9.6%	-5.0%	4.8%	14.7%	7.4%
Overall full-time equivalent (32.5 hours = 1 full-time)						
Men	156	48	24	302	121	579
	103	30	10	252	105	438
	51.1%	58.9%	144.7%	19.7%	15.5%	32.1%
Women	737	434	655	3,819	1,283	6,008
	689	376	651	3,644	1,140	5,611
	7.1%	15.4%	0.6%	4.8%	12.5%	7.1%
Total	893	482	679	4,121	1,404	6,587
	792	407	661	3,896	1,245	6,050
	12.8%	18.6%	2.7%	5.8%	12.8%	8.9%

Table 13. Pupil-teacher ratios

This table shows the pupil-teacher ratio at those ISC schools that participated in the Census in 2011 and 2012. Where sixth-form weighting has been applied, each sixth-former has been counted as two.

Pupils	HMC	SHMIS	GSA	IAPS	ISA	Total
Boys	133,408	25,615	4,559	113,617	36,346	257,854
	133,250	25,488	4,578	113,202	36,075	257,035
	0.1%	0.5%	-0.4%	0.4%	0.8%	0.3%
Girls	68,062	18,695	88,813	89,556	33,880	247,095
	67,179	18,981	90,078	88,560	34,230	247,189
	1.3%	-1.5%	-1.4%	1.1%	-1.0%	-0.0%
Total	201,470	44,310	93,372	203,173	70,226	504,949
	200,429	44,469	94,656	201,762	70,305	504,224
	0.5%	-0.4%	-1.4%	0.7%	-0.1%	0.1%
Ratios (raw)						
Pupil:teacher	9.2:1	8.7:1	9.2:1	9.7:1	9.7:1	9.4:1
	9.2:1	8.7:1	9.3:1	9.6:1	9.7:1	9.4:1
	0.0%	-0.3%	-0.6%	1.2%	0.3%	0.4%
Boys:girls (pupils)	2.0:1	1.4:1	0.1:1	1.3:1	1.1:1	1.0:1
	2.0:1	1.3:1	0.1:1	1.3:1	1.1:1	1.0:1
	-1.2%	2.0%	1.0%	-0.7%	1.8%	0.4%
Men:women (teachers)	1.2:1	0.7:1	0.3:1	0.5:1	0.4:1	0.6:1
	1.2:1	0.8:1	0.3:1	0.5:1	0.4:1	0.6:1
	-3.2%	-3.9%	-0.1%	-1.4%	-0.5%	-1.3%
Men:women (teaching assistants)	0.2:1	0.1:1	0.0:1	0.1:1	0.1:1	0.1:1
	0.2:1	0.1:1	0.0:1	0.1:1	0.1:1	0.1:1
	0.4%	0.4%	1.4%	0.1%	0.0%	0.2%
Ratios (with sixth-form weighting)						
Pupil:teacher	11.8:1	10.6:1	11.0:1	10.5:1	10.8:1	11.0:1
	11.8:1	10.6:1	11.0:1	10.3:1	10.7:1	10.9:1
	0.4%	-0.0%	-0.2%	1.2%	1.0%	0.8%

Table 14. Changes to full-time teachers

This table shows the number of full-time teachers coming into schools (broken down by previous occupation) and leaving schools (broken down by destination). This table comprises those schools that participated in the Census in both 2011 and 2012.

Arriving from	HMC	SofH	GSA	IAPS	ISA	Total
Independent schools	738	143	444	937	250	2,033
	720	174	425	881	223	2,014
	2.5%	-17.8%	4.5%	6.4%	12.1%	0.9%
Maintained schools	553	185	340	586	251	1,566
	560	188	367	595	270	1,586
	-1.3%	-1.6%	-7.4%	-1.5%	-7.0%	-1.3%
ITT at university or training college	304	55	116	184	61	592
	318	86	150	210	95	687
	-4.4%	-36.0%	-22.7%	-12.4%	-35.8%	-13.8%
New graduates	222	60	55	192	67	472
	233	44	56	152	55	474
	-4.7%	36.4%	-1.8%	26.3%	21.8%	-0.4%
Industry	105	19	23	61	26	199
	115	19	38	90	35	247
	-8.7%	0.0%	-39.5%	-32.2%	-25.7%	-19.4%
Other (incl. retirement)	363	131	244	525	181	1,159
	330	104	211	523	175	1,091
	10.0%	26.0%	15.6%	0.4%	3.4%	6.2%
Total	2,285	593	1,222	2,485	836	6,021
	2,276	615	1,247	2,451	853	6,099
	0.4%	-3.6%	-2.0%	1.4%	-2.0%	-1.3%
Going to						
Independent schools	656	113	362	682	172	1,636
	681	135	286	649	174	1,624
	-3.7%	-16.3%	26.6%	5.1%	-1.1%	0.7%
Maintained schools	130	78	92	131	73	418
	145	74	105	163	98	478
	-10.3%	5.4%	-12.4%	-19.6%	-25.5%	-12.6%
Industry	68	10	20	53	33	169
	63	18	23	38	27	146
	7.9%	-44.4%	-13.0%	39.5%	22.2%	15.8%
Other (incl. retirement)	1,159	317	809	1,463	549	3,559
	1,156	337	846	1,476	599	3,660
	0.3%	-5.9%	-4.4%	-0.9%	-8.3%	-2.8%
Total	2,013	518	1,283	2,329	827	5,782
	2,045	564	1,260	2,326	898	5,908
	-1.6%	-8.2%	1.8%	0.1%	-7.9%	-2.1%
Net gain from						
Independent schools	82	30	82	255	78	397
	39	39	139	232	49	390
	110.3%	-23.1%	-41.0%	9.9%	59.2%	1.8%
Maintained schools	423	107	248	455	178	1,148
	415	114	262	432	172	1,108
	1.9%	-6.1%	-5.3%	5.3%	3.5%	3.6%
Industry	37	9	3	8	-7	30
	52	1	15	52	8	101
	-28.8%	800.0%	-80.0%	-84.6%	-187.5%	-70.3%
Other	-796	-186	-565	-938	-368	-2,400
	-826	-233	-635	-953	-424	-2,569
	-3.6%	-20.2%	-11.0%	-1.6%	-13.2%	-6.6%
Total	272	75	-61	156	9	239
	231	51	-13	125	-45	191
	17.7%	47.1%	369.2%	24.8%	-120.0%	25.1%
Full-time staff						
Turnover as a % of full-time teachers	10.2	12.0	15.4	13.1	14.3	12.6
	10.5	13.2	15.0	13.1	15.6	12.9
	-2.4%	-9.1%	2.7%	-0.0%	-8.0%	-2.4%
Gain as a % of full-time teachers	1.4	1.7	-0.7	0.9	0.2	0.5
	1.2	1.2	-0.2	0.7	-0.8	0.4
	16.7%	45.6%	373.1%	24.6%	-120.0%	24.8%

Constituent Associations:

Association of Governing Bodies of
Independent Schools

Council of British International Schools

Girls' Schools Association

Headmasters' and Headmistresses' Conference

Independent Association of Prep Schools

Independent Schools Association

The Independent Schools' Bursars Association

The Society of Heads



independent
schools
council

☎ 020 7766 7070
☎ 020 7766 7071

St Vincent House
30 Orange Street
London WC2H 7HH

www.isc.co.uk

A Company Limited by Guarantee.
Registered in England and Wales
No. 1103760