

ISC CENSUS AND ANNUAL REPORT 2022

ISC SCHOOLS: LOCATION, TYPE, STRUCTURE AND SIZE

PUPIL NUMBERS

REGIONAL DIFFERENCES

SINGLE-SEX AND CO-EDUCATION

BOARDING

MOVEMENT BETWEEN SECTORS

SEND

ETHNICITY

INTERNATIONAL FOOTPRINT: NON-BRITISH PUPILS AND OVERSEAS CAMPUSES

SCHOOL FEES

BURSARIES AND SCHOLARSHIPS

PUBLIC BENEFIT

TEACHING STAFF

UNIVERSITY ENTRANCE

This report is based on a survey carried out in January 2022. All 1,388 schools in UK membership of the constituent associations of ISC ("ISC schools") completed the survey.

Appendix One gives a snapshot of ISC schools as they were in January 2022. Appendix Two shows comparative figures for the schools that completed the census in both 2021 and 2022 and is therefore the best guide for annual change.

ISC's constituent associations are: the Association of Governing Bodies of Independent Schools (AGBIS), the Girls' Schools Association (GSA), the Headmasters' and Headmistresses' Conference (HMC), the Independent Association of Prep Schools (IAPS), the Independent Schools Association (ISA), the Independent Schools' Bursars Association (ISBA) and the Society of Heads (SofH).

Four associations are affiliate members of ISC: the Council of British International Schools (COBIS), the Boarding Schools' Association (BSA), the Scottish Council of Independent Schools (SCIS) and the Welsh Independent Schools Council (WISC).

The ISC Research and Data Team would like to thank all participating schools for the considerable time taken to complete the census and to check returns, particularly during the busy start of the spring term and when other census completions are required.

ISC Research and Data Team

Jonathan Parkes (Head of Research and Data)

Walid Ayubi

Danny Chan

Shun-Yue Chan

Design and layout: Tom Forge @ DesignForge.ink
tom@designforge.ink

Printing: Lazervision Ltd, Kent, TN8 6EL

CONTENTS

Foreword	2
Executive Summary	3
ISC Schools	5
Location	5
Type	6
Structure	7
Size	7
Pupil Numbers	8
By Region	8
Single-sex and Co-education	9
Boarders	10
Movement Between Sectors	12
SEND	12
Ethnicity	13
International Footprint	14
Non-British Pupils	14
Overseas Schools	16
School Fees	17
Scholarships and Bursaries	18
Public Benefit	20
Teaching Staff	21
Entrance to Higher Education	22

Fig 1.	School location and pupil density	5
Fig 2.	ISC school membership	6
Fig 3.	ISC school structures	7
Fig 4.	Mean school size by type of school	7
Fig 5.	ISC pupil numbers since 1990 (selected years)	8
Fig 6.	Annual growth in pupil numbers split by region (like-for-like)	8
Fig 7.	Girls as a percentage of all pupils	9
Fig 8.	Proportion of year groups that are entirely boys, entirely girls, or co-educational	9
Fig 9.	Boarders at ISC schools: 2000-2022	10
Fig 10.	Boarders as a percentage of all pupils	10
Fig 11.	Boarders as a percentage of all pupils by region	11
Fig 12.	Full, weekly and flexi-boarding by year group	11
Fig 13.	New pupils breakdown	12
Fig 14.	SEND pupils	12
Fig 15.	Ethnicity of ISC pupils (2022)	13
Fig 16.	Ethnicity comparisons for schools in England: Number of pupils and % share (2021)	13
Fig 17.	Ethnicity of ISC pupils by region (2022)	13

Fig 18.	Non-British pupils at ISC schools	14
Fig 19.	Origin of non-British pupils at ISC schools	15
Fig 20.	Number of non-British pupils whose parents live overseas from selected countries at ISC schools: 2007-2022	16
Fig 21.	Location of overseas campuses of ISC schools	16
Fig 22.	Overseas schools in membership of ISC associations	16
Fig 23.	School fees (excluding nursery fees)	17
Fig 24.	Fee increases since 2000 (like-for-like)	17
Fig 25.	Contributions to fees (annual)	18
Fig 26.	Proportion of pupils receiving fee assistance: 2000-2022	18
Fig 27.	Distribution of means-tested bursaries and means-tested scholarships	19
Fig 28.	Trends in means-tested bursaries and scholarships versus non-means-tested scholarships at ISC schools (2011-2022)	19
Fig 29.	Number of partnership activities	20
Fig 30.	Breakdown of facilities at ISC schools	20
Fig 31.	Teacher numbers and pupil-teacher ratio	21
Fig 32.	Teaching assistant numbers	21
Fig 33.	Higher education destination summary	22
Fig 34.	Destination of ISC pupils attending UK universities: Top 25	23
Fig 35.	Destination of ISC pupils going to non-UK universities: Countries	23
Fig 36.	Destination of ISC pupils attending non-UK universities: Top 10	23

Appendix One: Non-Comparative Tables 24

Table 1a.	School and pupil numbers by association	24
Table 1b.	School and pupil numbers by association (further breakdown)	24
Table 1c.	School and pupil numbers by category of school	25
Table 2.	Pupil numbers by age	25
Table 3.	Pupil numbers by year group	26
Table 4.	New pupil numbers by year group	26
Table 5.	Pupil numbers by region	27
Table 6.	Fees by region (including nursery fees)	27
Table 7.	Fees by age group (including nursery fees)	28
Table 8a.	Contributions to fees: senior, mixed-age and junior schools (termly values)	28
Table 8b.	Contributions to fees: single-sex and co-educational schools (termly values)	28
Table 8c.	Contributions to fees: day and boarding schools (termly values)	29
Table 9.	Non-British pupils whose parents live overseas	29
Table 10.	Non-British pupils whose parents live in the UK	30

Table 11.	New non-British pupils whose parents live overseas	31
Table 12.	New non-British pupils whose parents live in the UK	32
Table 13.	British pupils with parents living overseas	32
Table 14.	Destination of post-18 school leavers	33
Table 15.	Destination of pupils going to non-UK universities	33
Table 16.	Size of schools	34
Table 17.	Boarders as a percentage of all pupils	35
Table 18.	Boys as a percentage of all pupils	35
Table 19.	Teacher numbers	36
Table 20.	Teaching assistant numbers	36
Table 21.	Pupil-teacher ratios	36
Table 22.	Changes to full-time teachers	37
Table 23.	SEND pupils	37

Appendix Two: Comparative Tables 38

Table 1a.	Changes to pupil numbers by association	38
Table 1b.	Changes to pupil numbers by category of school	38
Table 2.	Changes to pupil numbers by age	39
Table 3.	Changes to pupil numbers by year group	40
Table 4.	Changes to new pupil numbers by year group	41
Table 5.	Changes to pupil numbers by region	42
Table 6.	Changes to fees by region	43
Table 7.	Changes to fees by school type and age group	43
Table 8a.	Changes to contributions to fees: senior, mixed-age and junior schools (termly values)	44
Table 8b.	Changes to contributions to fees: single-sex and co-educational schools (termly values)	45
Table 8c.	Changes to contributions to fees: day and boarding schools (termly values)	46
Table 9.	Changes to non-British pupils whose parents live overseas	47
Table 10.	Changes to non-British pupils whose parents live in the UK	48
Table 11.	Changes to British pupils whose parents live overseas	49
Table 12.	Changes to teacher numbers	49
Table 13.	Changes to teaching assistant numbers	50
Table 14.	Changes to pupil-teacher ratios	51
Table 15.	Changes to full-time teachers	52

Appendix Three: ISC Regions IBC

Fig 1.	ISC English Regions	IBC
--------	---------------------	-----

Foreword

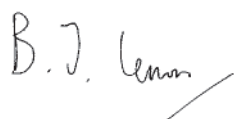
Thank you to ISC schools for completing the census this year and doing so while coping with high rates of COVID. This set of data describes the situation in January 2022 when many aspects of schooling in the UK were still far from normal. The report therefore provides further insight into the continued impact of the pandemic on the independent sector as well as starting to describe the road to recovery.

For me there are many interesting findings, such as the fact that pupil numbers grew to reach a record high, despite the impact of COVID on the ability of pupils to travel to the UK and, for some parents, loss of income. This census has also recorded that fee increases were kept quite low for the second year in a row.

Reassuringly, we have once again seen a rise in fee assistance provision, with the amount for means-tested fee assistance rising to a total of £480 million. While partnership activity between independent and state schools has inevitably been affected by the pandemic, this report tells us that more and more schools have been able to resume their joint working as restrictions and absence rates have become less pronounced.

International pupils bring a global perspective to our schools, enrich the community, and are a vital pipeline to British universities. We can see that non-British pupils whose parents live overseas accounted for 4.6% of the total ISC pupil population in 2022. Also noteworthy is the impact of the British National (Overseas) visa for people from Hong Kong, evidenced by the fact that the number of Hong Kong pupils whose parents live in the UK has more than trebled. We have also seen growth in overseas campuses, the income from which helps fund bursaries and keep costs down in the UK.

Finally, I want to take this opportunity to pay tribute to teachers and all school staff, heads and governors, pupils and their families for all they have achieved in particularly challenging circumstances.



Barnaby Lenon, Chairman
Independent Schools Council

Executive Summary

1. THE INDEPENDENT SCHOOLS SECTOR IS RECOVERING STRONGLY FROM THE COVID-19 PANDEMIC

- There are now a record 544,316 pupils at 1,388 ISC member schools, up from 532,237 in 2021 and surpassing the previous record high of 537,315 in 2020.
- At the 1,351 schools completing the census in both 2021 and 2022, pupil numbers have increased 2.0%.
- Every UK region experienced an increase in independent school pupil numbers, with the largest growth of 3.6% recorded in the South West region.
- 109,795 new pupils joined ISC schools in the current academic year, an increase from 104,827 in 2021.
- The proportion of pupils who are from a UK minority ethnic background continues to increase, showing that ISC schools reflect the overall diversity of the UK student population. In 2021, 35.1% of pupils identified as UK minority ethnic, whereas in 2022, the proportion has risen to 37.7%.
- 95,991 pupils identified as having SEND, equating to 17.6% of all pupils, higher than last year.
- 31,029 non-British pupils whose parents are UK-based attend ISC schools this year, an increase of 1,467 compared with 2021 and comprising 5.7% of all ISC pupils.

2. MEASURED FEE INCREASES AND AN INCREASING AMOUNT OF FEE ASSISTANCE

- ISC schools are continuing to control fee increases, with an annual average increase of 3.0%. This represents the second lowest increase since 2000.
- The average day school fee has increased 3.1%, with the majority of day schools charging between £3,000 and £5,500 per term.
- Fee assistance worth nearly £1.2bn was provided this year, an increase of 4.8%.
- More than £960m of fee assistance originated directly from the school of which £480m was provided on a means-tested basis.
- Over a third of all ISC pupils receive some type of fee assistance.
- The average worth of a means-tested bursary was £10,840 per annum, an increase of 5.9% compared with last year, showing a continuing trend in schools to support more disadvantaged families in accessing high-quality education.

3. HEALTHY GROWTH IN THE NUMBER OF BOARDING PUPILS

- There were 65,232 boarding pupils on census day – 20th January 2022.
- If we consider pupils registered to board at any point during the academic year 2021/22, there were 69,937 boarders, an increase of 4,592 from last year.
- The trend in recent years towards weekly and flexi-boarding continues. 22.8% of boarders are in these two categories compared with 20.2% in 2020.

4. ISC SCHOOLS ARE RETURNING TO THEIR PARTNERSHIP ACTIVITIES AS PANDEMIC RESTRICTIONS EASE

- Partnership activity between independent and state schools is recovering well following widespread pandemic disruption. These activities include reading with younger pupils, preparing A-level pupils for higher education, sharing facilities and seconding teaching staff.
- There were 6,963 partnerships at 936 schools recorded in the calendar year 2021, despite some COVID restrictions still being in place during this period.
- Beyond partnerships with state schools, between £6.7m and £10.4m was raised for charities at ISC schools this year and 841 ISC schools organised volunteering opportunities for their staff and / or pupils.

5. MOST SIXTH FORM LEAVERS FROM ISC SCHOOLS GO ON TO HIGHLY RANKED UNIVERSITIES

- 93% of Year 13 ISC pupils continue to higher education in the UK or overseas.
- 58% of ISC pupils who enter UK higher education attend one of the "Top 25" group of universities as defined by *The Sunday Times Good University Guide*.
- 4% of pupils entering UK higher education attend either Oxford or Cambridge.
- 5% of pupils who enter higher education choose to attend an overseas university. Universities in the USA are the most popular, attracting 47% of this set of pupils. Last year, pupils went on to 539 different overseas universities in 60 different countries.

6. UK INDEPENDENT SCHOOLS ARE INCREASING THEIR INTERNATIONAL PRESENCE

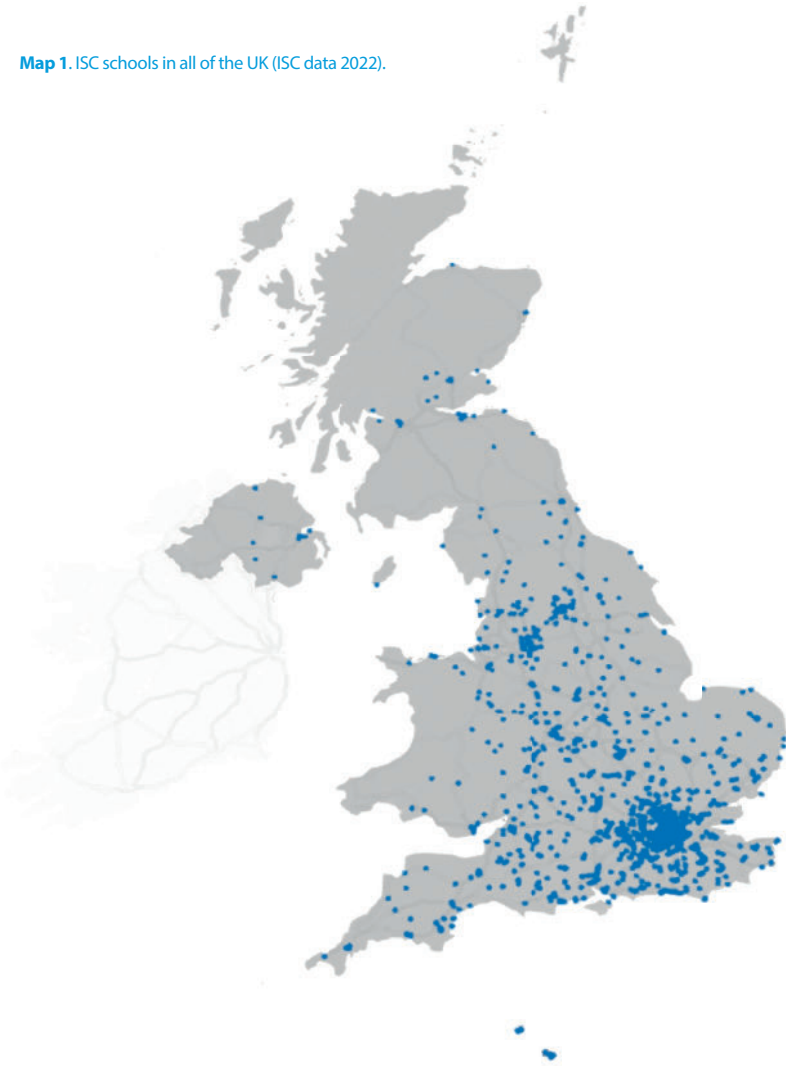
- ISC schools operate 93 overseas campuses overseas, educating nearly 60,000 pupils. This is an increase from 81 campuses and nearly 53,000 pupils in 2021.
- There are 25,079 non-British pupils at ISC schools whose parents live overseas, an increase of 1.6% on 2021. Pupils from Hong Kong comprise the largest group with 5,845 pupils.
- The number of Hong Kong pupils whose parents live in the UK has more than trebled from 496 in 2021 to 1,538 this year. Given the change in government policy permitting Hong Kong British Nationals (Overseas) to resettle in the UK, this is not a surprising finding.
- This year, 475 teachers from outside the UK came to teach in ISC schools.

ISC Schools: Location, School Type, Structure and Size

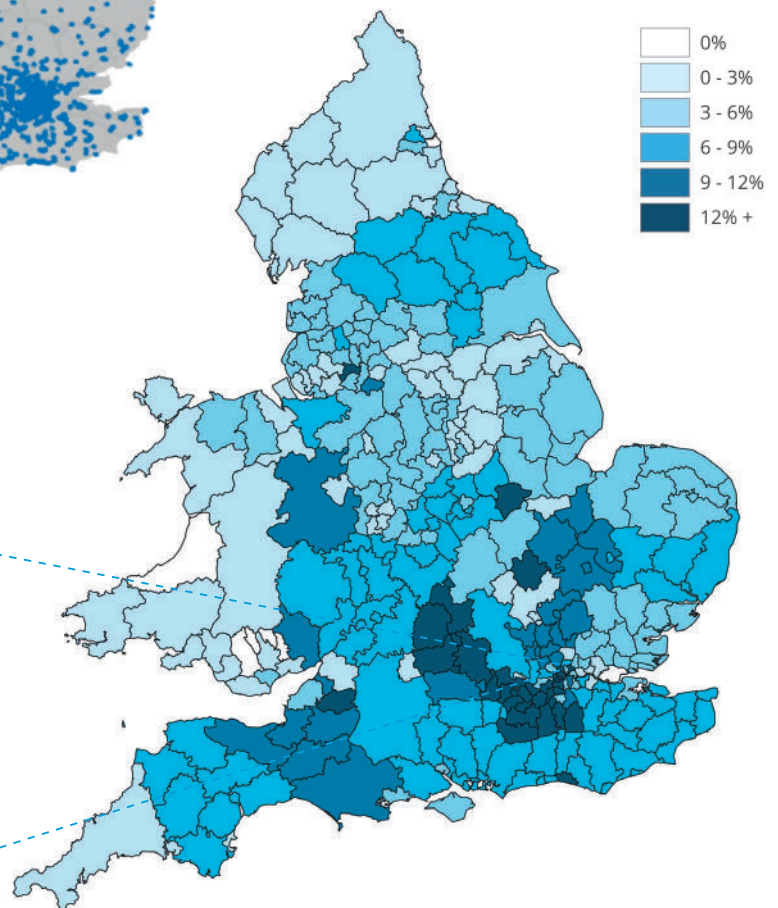
Fig 1. School location and pupil density

Map 1 relates to ISC schools only and covers all of the UK (ISC data 2022). Map 2 illustrates pupil density¹ for all independent schools, but is confined to England and Wales only (DfE and Welsh Government data 2021). Map 3 shows a detailed breakdown of pupil density¹ in London..

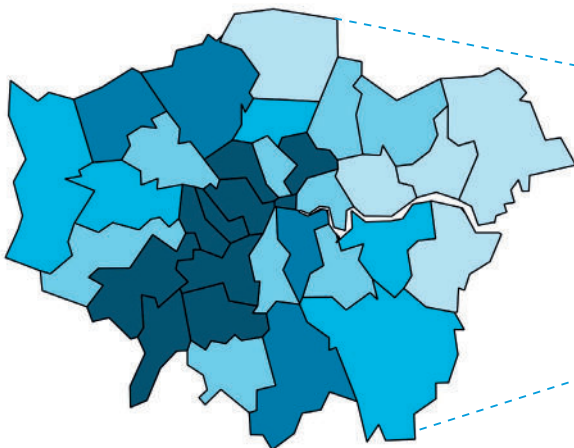
Map 1. ISC schools in all of the UK (ISC data 2022).



Map 2. This map shows the pupil density¹ in England and Wales broken down by local authority. Equivalent figures are not available for other parts of the UK.



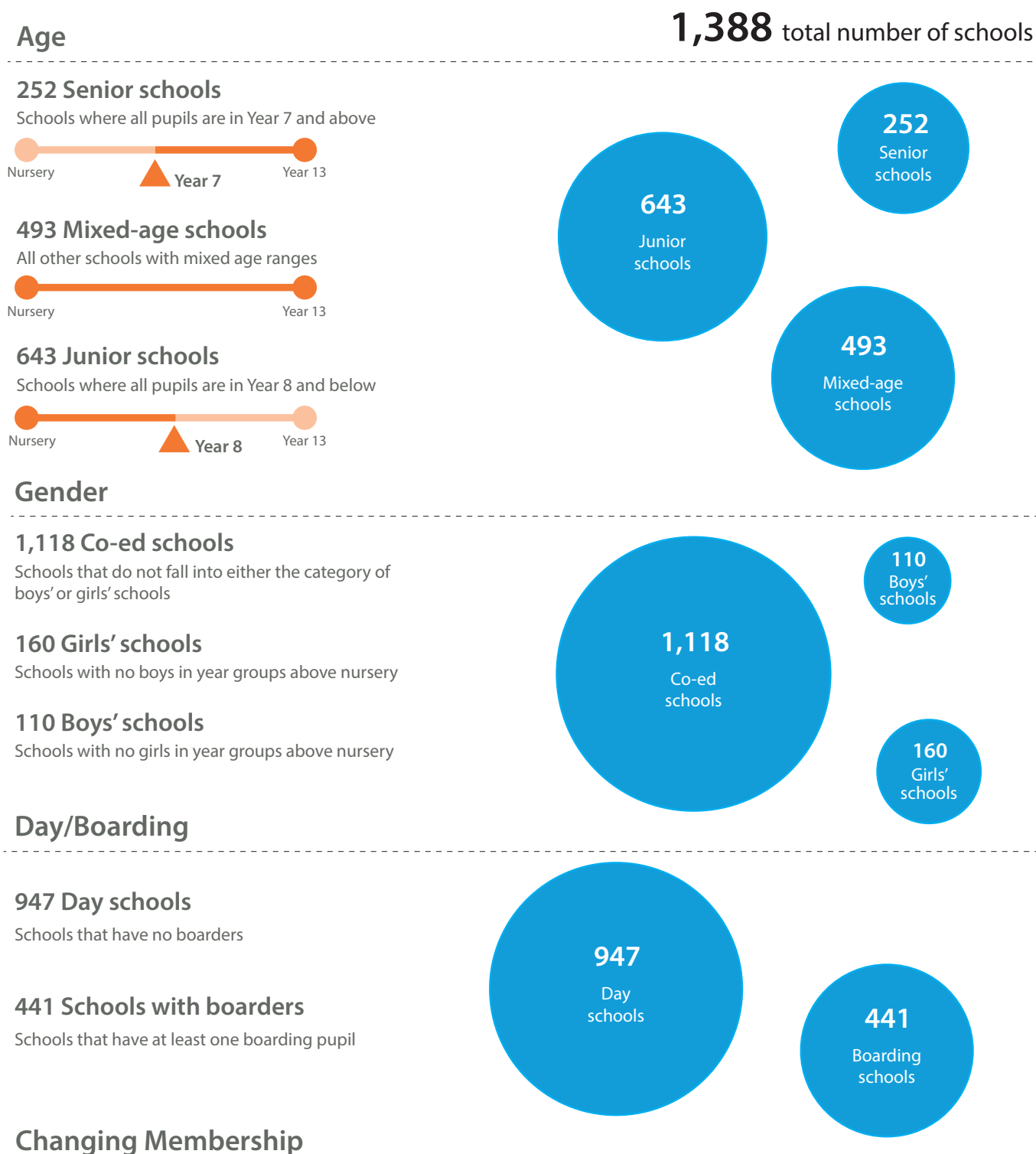
Map 3. A detailed breakdown of pupil density¹ in London.



¹ Proportion of school-age children that are educated independently.

Fig 2. ISC school membership

This page illustrates the number of schools in ISC membership by school type. We have categorised the schools by their pupils' age, gender and whether they have day or boarding pupils. Each school is counted in one (and only one) category for each type. There is also a note at the bottom of this page explaining changes in membership between 2021 and 2022.



Changing Membership

Since last year's census, where 1,377 schools were in membership of the constituent associations: 17 schools left, 34 schools joined and 12 schools consolidated records with affiliated schools to form 6 schools for census reporting. There are therefore 1,388 schools in membership this year, 1,354 of which participated in both the 2021 and 2022 census. 3 schools who did the census in both years are not included in like-for-like calculations due to a change in their structure. The figures from only these 1,351 schools make up the tables in Appendix Two for an accurate comparison of the sector.

ISC Schools: Location, School Type, Structure and Size

Figure 1 illustrates that the majority of ISC schools are located in southern England; indeed, 55% of ISC schools in England are located in London, the South East and South Central ISC regions, educating 54% of all ISC pupils. Of all independent schools in England (ISC and non-ISC schools), 47% are located in these regions, educating 54% of all independent school pupils.

Figure 2 categorises ISC schools into three main types – by age range, by gender and by day/boarding. These are the categories that are used most frequently throughout this report. It is worth noting, however, that ISC schools could be categorised in other

Fig 3. ISC school structures

Figure 2 illustrates the numbers of ISC schools according to whether they are senior, mixed-age or junior. ISC schools cover a range of different year groups, sometimes making categorisation difficult. For completeness, Figure 3 shows the most common sets of year group ranges found within ISC schools. The blue bars show year group structure for each subcategory. The numbers in white indicate the number of schools that share that particular year group structure.

Senior¹

N/R	Y1	Y2	Y3	Y4	Y5	Y6	Y7	Y8	Y9	Y10	Y11	Y12	Y13	
							148							
									49					
							16							
										14				
										10				

Other senior schools: 15⁴

Mixed-age²

N/R	Y1	Y2	Y3	Y4	Y5	Y6	Y7	Y8	Y9	Y10	Y11	Y12	Y13	
	282													
	73													
				54										
						9								

Other mixed-age schools: 75⁴

Junior³

N/R	Y1	Y2	Y3	Y4	Y5	Y6	Y7	Y8	Y9	Y10	Y11	Y12	Y13
	372												
	199												
	20												
			13										

Other junior schools: 39⁴

¹ Senior schools are defined as having all pupils in year 7 and above.

² Mixed-age schools are defined as all other ISC schools.

³ Junior schools are defined as having all pupils in year 8 or below.

⁴ Some school structures are excluded from this illustration because their structure is shared by fewer than 9 schools: 129 schools are excluded – 15 senior schools, 75 mixed-age schools and 39 junior schools.

ways too. For example, 45% of ISC schools are academically selective, 55% are not. Another way we might categorise schools is in relation to charitable status – 70% of ISC schools hold charitable status, 30% do not. This represents a slight drop from last year where 72% of schools held charitable status.

Figure 2 shows that ISC schools are more likely to be junior schools than senior or mixed-age schools, they are more likely to be co-educational schools than single-sex, and more likely to be day schools as opposed to boarding schools. Figure 3 illustrates the difficulties in categorising independent schools neatly owing to their differing structures.

As well as displaying differing structures, ISC schools vary significantly in size from having fewer than 50 pupils to nearly 2,500, although half of all schools have fewer than 300 pupils. The mean school size is just over 390, but the median is just under 300. In addition, schools have been steadily growing in size since the mid-1980s. In 1985 the average school size was 314; it now stands at 392.

Finally, as illustrated in Figure 4, school size varies according to the type of school; senior schools tend to be larger than junior schools, schools with boarding pupils tend to be larger than schools with only day pupils, and schools that are entirely single-sex tend to be larger than co-educational schools. Due to these size variances, the remainder of this report focuses on pupil numbers to illustrate trends within the sector.

Fig 4. Mean school size by type of school

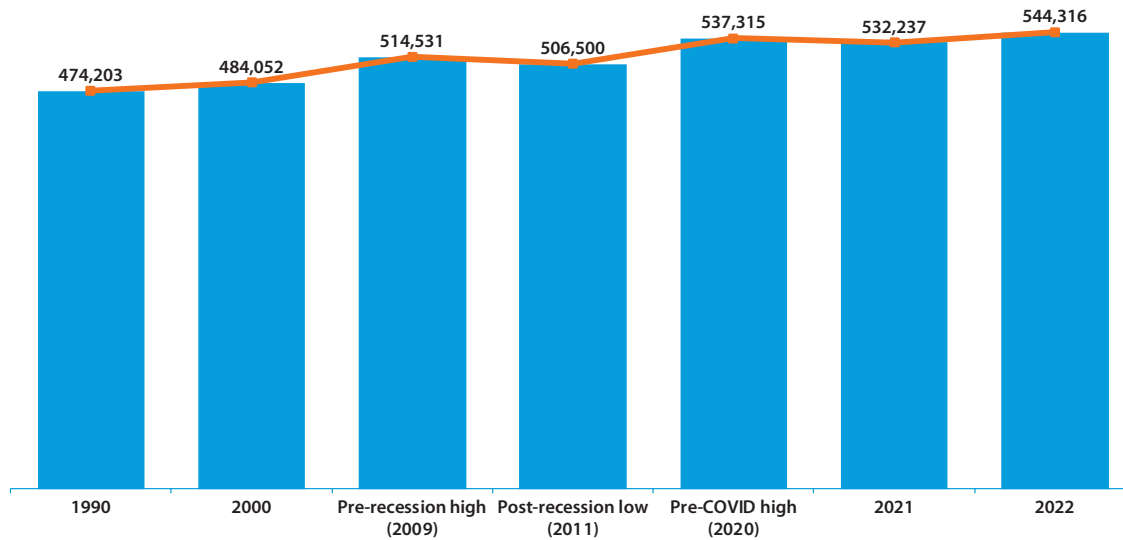
Type of school	Average size
Senior	492
Mixed	546
Junior	235
Day schools	352
Schools with boarding pupils	478
Co-ed schools	374
Single-sex schools	469
Overall average	392

Pupil Numbers

There are now 544,316 pupils at ISC schools, up from 532,237 in 2021 and surpassing the previous high in 2020 of 537,315, as illustrated by Figure 5. If we consider only those schools in

membership this year and last year, we see pupil numbers have increased 2.0% since 2021.

Fig 5. ISC pupil numbers since 1990 (selected years)

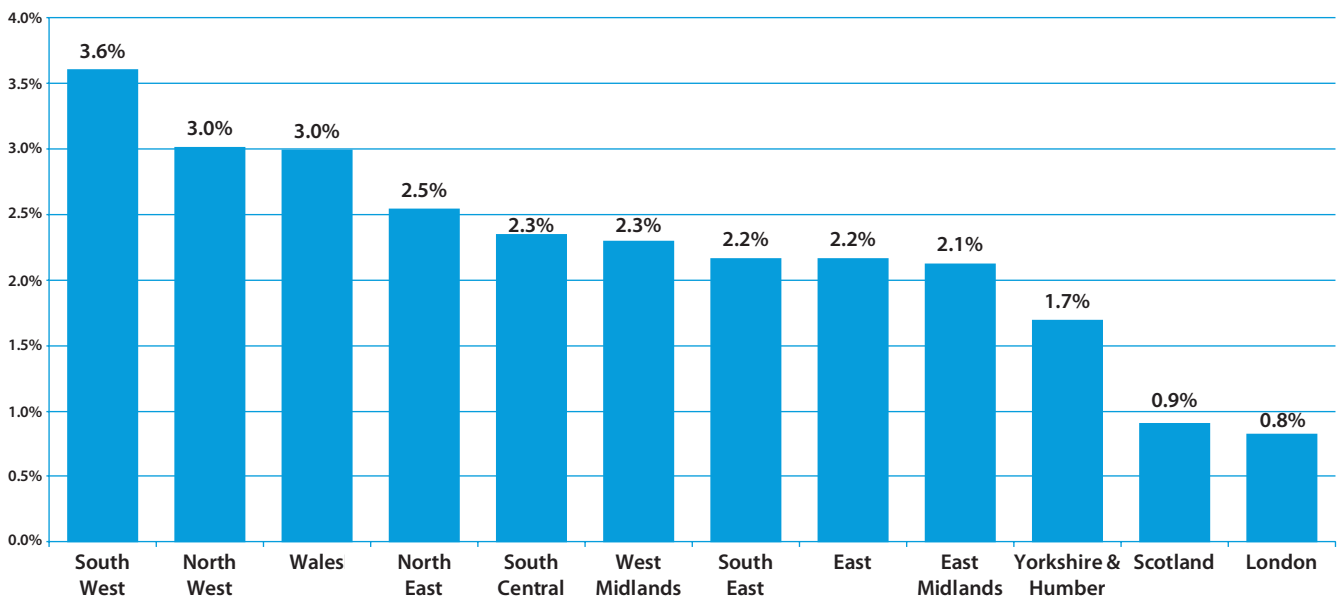


Pupil Numbers: By Region

Whilst overall pupil numbers have grown nationally at ISC schools, the rate of growth varies by region as illustrated by Figure 6. For example, pupil numbers in the South West are up 3.6% whereas in London the increase is only 0.8%. It is important to note, however, that smaller regions (in terms of prevalence of

ISC schools) are more susceptible to fluctuations in percentage change. For example, there are only 18 ISC schools in Wales that completed the census in both 2021 and 2022. Last year Wales saw the largest fall of 3.3%; this year it sees an increase of 3.0%.

Fig 6. Annual growth in pupil numbers split by region (like-for-like)



Pupil Numbers: Single-sex and Co-education

The majority of ISC schools are co-educational: only 17% are single-sex in all year groups. A further 36 ISC schools are single-sex apart from a co-educational nursery, accounting for over half of single-sex schools with a nursery. Therefore, the definition of a single-sex school in this census is a school which is single-sex in all year groups above nursery. Using this definition, 19% of

schools are single-sex, educating 126,732 pupils collectively. Further, Figure 7 illustrates that there are many other schools that are predominately single-sex. Over 60% more girls are educated in single-sex schools than boys. However, co-educational schools have a higher proportion of boys, with 55% of pupils being male in these schools.

Fig 7. Girls as a percentage of all pupils

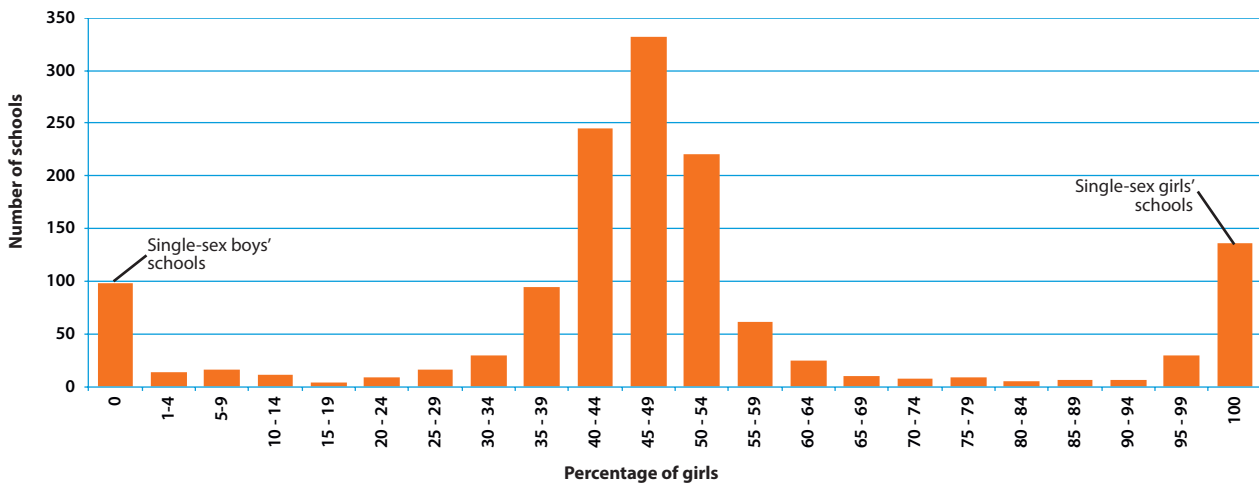
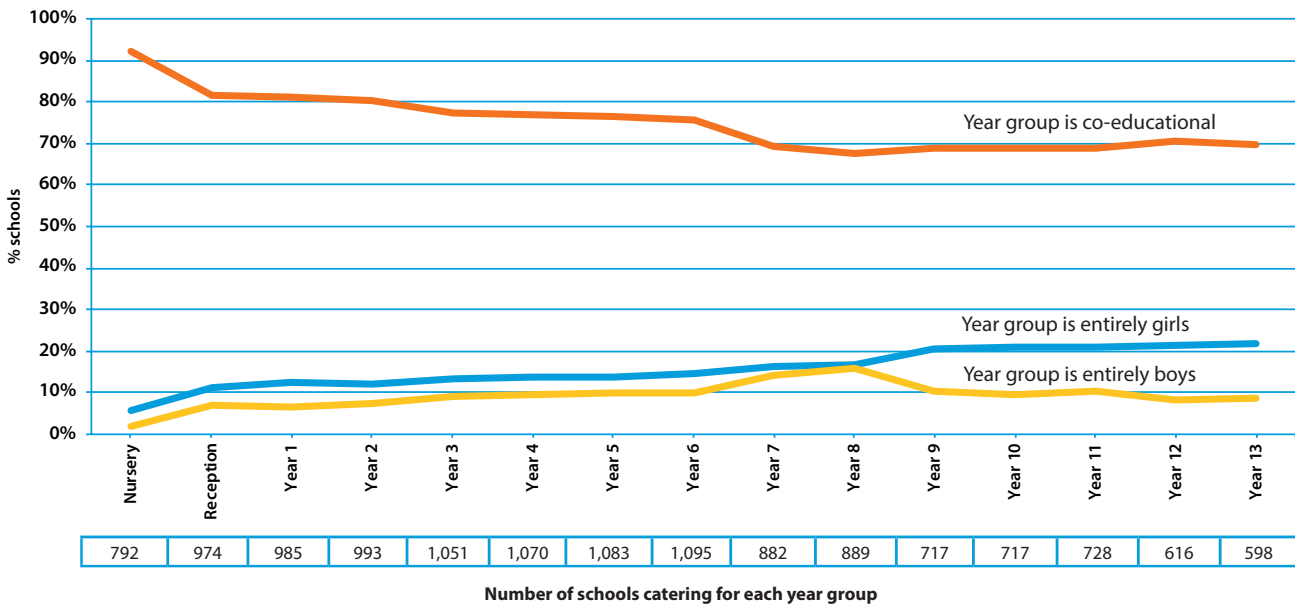


Figure 8 shows the proportion of single-sex schools compared with co-education at each of the different year groups. Co-education is very common at nursery level where over 90% of ISC schools have both boys and girls. As children get older, single-sex education becomes more common, reaching a peak

between years 7 and 11 where around 30% of ISC schools have year groups of either all boys or all girls. Above Year 8, there is a slight shift back to co-education. Finally, it is interesting to see that from Year 9 there are more than twice as many schools with single-sex girls' year groups than single-sex boys'.

Fig 8. Proportion of year groups that are entirely boys, entirely girls, or co-educational



Pupil Numbers: Boarders

Boarding numbers were 65,232 (based on the day the census was taken), making up 12.0% of total pupil numbers and an increase on the estimated¹ 62,405 boarding pupils reported in 2021. Boarding numbers based on pupils registered to board

at any point during the academic year 2021/22 were 69,937, an increase of 4,592 compared with 2021. Figure 9 shows the number of boarders at ISC schools since 2000 and also the percentage of all pupils that they accounted for.

Fig 9. Boarders at ISC schools: 2000-2022²

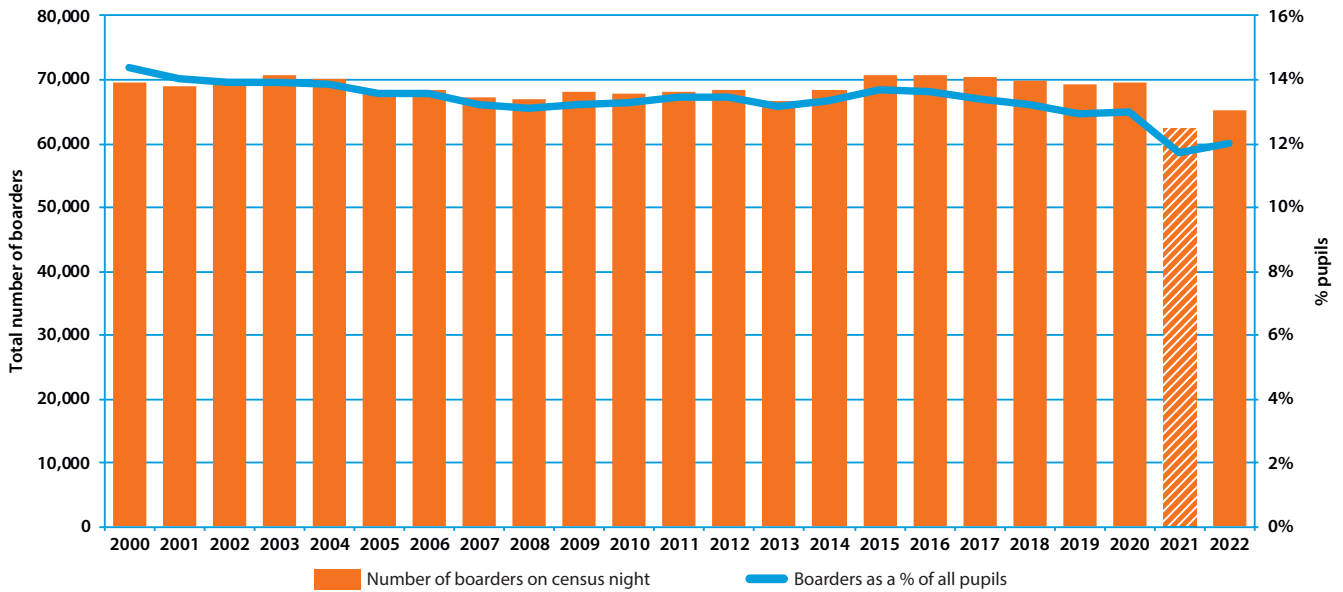
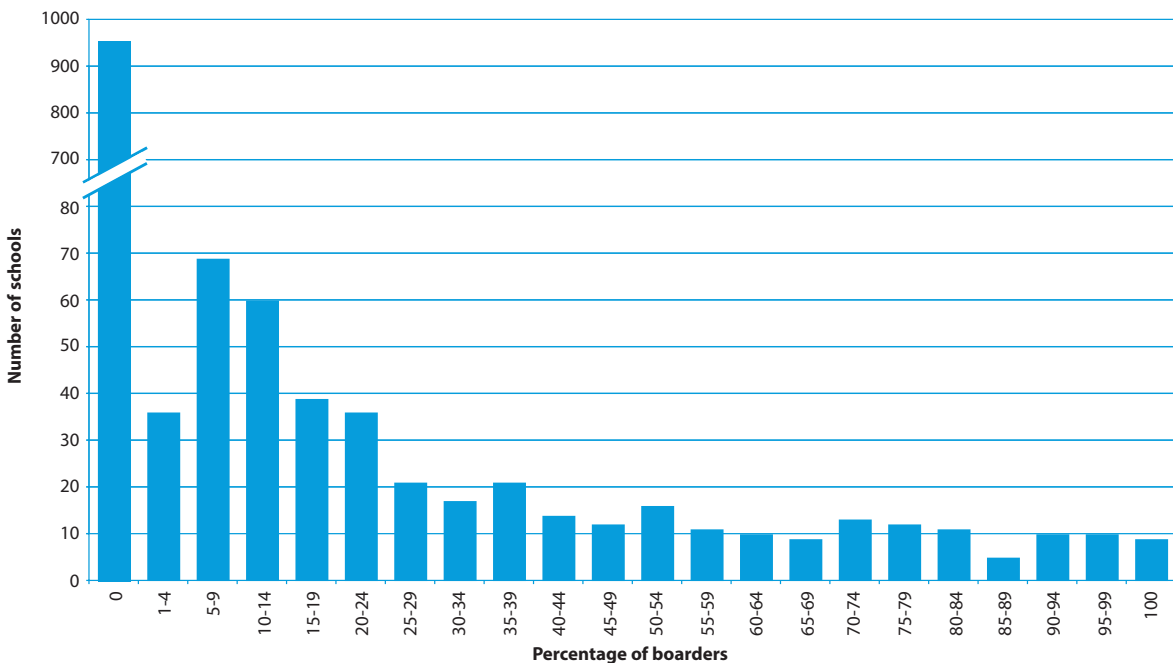


Figure 10 illustrates the proportions of boarding pupils at ISC schools – 441 schools, representing 32% of all ISC schools, cater for boarding pupils. Note, however, that in the large majority

(74%) of ISC boarding schools fewer than half of the pupils board. Only 2.0% (or 9 schools) are exclusively boarding schools.

Fig 10. Boarders as a percentage of all pupils



¹ Boarding on census day in 2021 was estimated by assuming that all registered full and weekly boarders would have boarded together with a proportion of flexi-boarders determined by historic census data.

² 2021 value shows estimated boarders as the census was conducted during a period of remote learning for most schools.

Figure 11 illustrates regional variations in boarding. At schools located in the South Central region, 23% of pupils board, while at schools in London, just 2% of pupils board.

Figure 12 illustrates boarding patterns for ISC schools as a whole and by year group. While overall, 13% of pupils are registered boarders, in sixth forms this proportion more than doubles to over three in ten pupils. For junior pupils, this proportion is significantly lower, with only 2% of pupils boarding.

In addition to boarding being far more prevalent at sixth form than at junior level, sixth form pupils are far more likely to board on a full-time basis: 85% of sixth form boarding pupils are full boarders, 10% are weekly boarders and 5% are flexi-boarders. In contrast, more than half of junior boarding pupils are flexi-boarders. Indeed, this is the first year in which flexi-boarding is the most popular form of boarding for junior pupils. Whilst full boarding remains most popular overall, the pattern appears to be changing with weekly and flexi-boarding becoming more popular. The proportion of weekly and flexi-boarders has

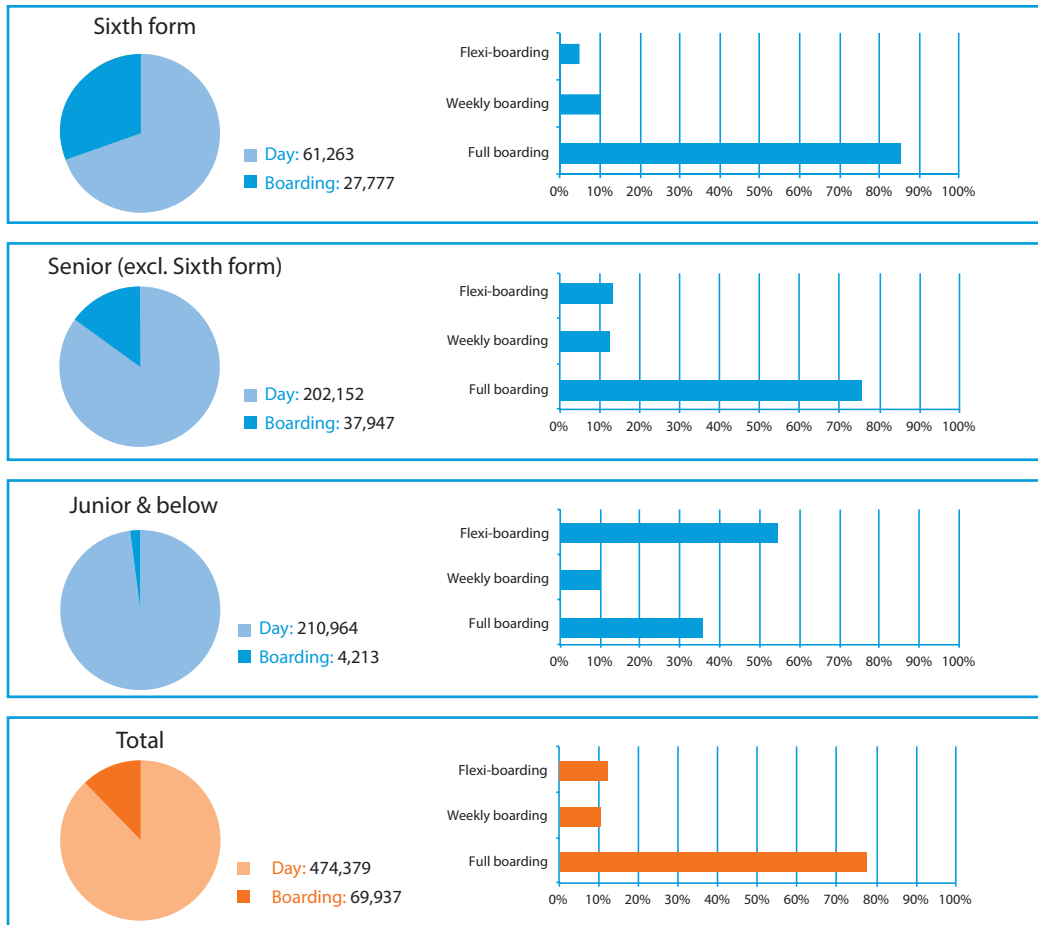
increased in recent years. In 2016, 15.7% of boarders were weekly or flexi-boarders; this year the figure is 22.8%. Many working parents value the flexibility of weekly and flexi-boarding.

Fig 11. Boarders as a percentage of all pupils in each region

Region	Number of ISC schools	Number of ISC schools with one or more boarder	Total number of pupils	Total number of boarders	Boarders as % of pupils
South Central	222	103	79,293	18,212	23.0%
South West	94	50	36,280	8,232	22.7%
Wales	19	9	7,432	1,262	17.0%
East Midlands	69	23	24,469	4,006	16.4%
South East	200	84	78,514	12,343	15.7%
West Midlands	103	31	36,487	4,566	12.5%
Yorkshire & Humber	62	24	25,934	2,857	11.0%
East	151	57	63,691	6,092	9.6%
Scotland	34	17	25,451	2,315	9.1%
North West	90	14	36,201	2,245	6.2%
North East	17	4	7,306	300	4.1%
London	307	18	110,559	2,384	2.2%
Total	1,388	441	544,316	65,232	12.0%

Note: Northern Ireland, the Channel Islands and the Isle of Man are excluded due to the small numbers of schools in these regions, but are included in the total.

Fig 12. Full, weekly and flexi-boarding by year group

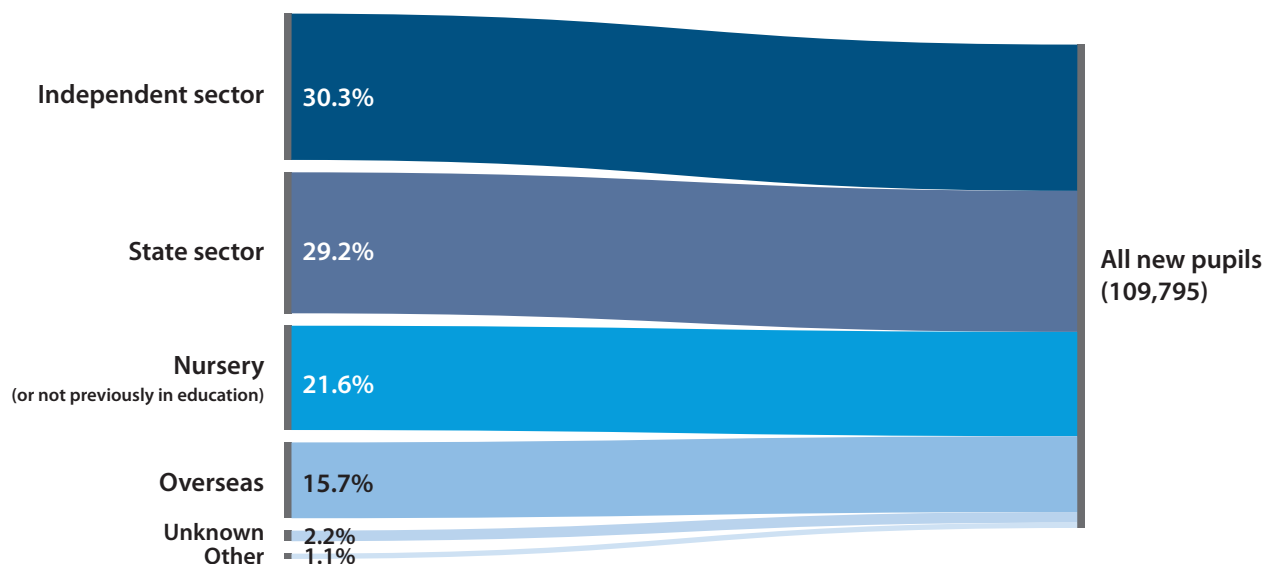


Note: For Figure 12, pupils are classed as boarders if they boarded at some point during the academic year 2021/22. In previous tables and charts, pupils are counted as a boarder if they boarded on census Day (20th January 2022). A larger number of boarders are, therefore, included in Figure 12.

Pupil Numbers: Movement Between Sectors

Approximately 6% of school children are educated at independent schools. Figure 13 illustrates where pupils were educated before joining an ISC school this academic year. Nearly three in ten pupils new to the independent sector came from state-funded establishments.

Fig 13. New pupils breakdown



Pupil Numbers: Special Educational Needs and Disabilities (SEND)¹

ISC schools provide SEND support for 95,991 pupils with SEND (17.6% of all pupils). Of these, 82,391 pupils have been identified with one or more specific SEND. This compares with 77,026 in 2021. 5,546 pupils have an Educational Health and Care (EHC)

Plan (5.8% of all ISC SEND pupils). The most common SEND is Specific Learning Difficulty (SpLD), which includes conditions such as dyslexia and dyspraxia and represents 55.8% of all SEND pupils in ISC schools.

Fig 14. SEND pupils

Types of SEND	Total pupils	% of all SEND pupils
Specific Learning Difficulty (SpLD)	53,523	55.8%
Moderate Learning Difficulty (MLD)	3,339	3.5%
Severe Learning Difficulty (SLD)	162	0.2%
Profound & Multiple Learning Difficulty (PMLD)	89	0.1%
Social, Emotional and Mental Health (SEMH)	15,079	15.7%
Speech, Language and Communication Needs (SLCN)	7,564	7.9%
Hearing Impairment (HI)	1,896	2.0%
Visual Impairment (VI)	1,920	2.0%
Multi-Sensory Impairment (MSI)	585	0.6%
Physical Difficulty (PD)	2,582	2.7%
Autistic Spectrum Disorder (ASD)	8,129	8.5%
Other Difficulty/Disability	5,432	5.7%
SEN support but no specialist assessment of type of need	13,600	14.2%
Total	95,991	

Note: Some pupils have more than one SEND: they are counted under each individual category of SEND, but are counted only once in the total.

¹ SEND is also referred to as Additional Support Needs, particularly in Scotland.

Pupil Numbers: Ethnicity

Figure 15 shows that 62.3% of all ISC pupils are from a White British background, while 37.7% are from a UK minority ethnic background. Figures for the state-funded sector only cover schools in England and the latest data available is from 2021.

Fig 15. Ethnicity of ISC pupils (2022)

	No. of pupils	% share
White British	241,443	62.3%
UK minority ethnic	146,281	37.7%
Total	387,724	

As in the UK as a whole, ethnicity in ISC schools varies by region as shown by Figure 17. Finally, as with the trends experienced among pupils in the state-funded sector, the proportion of

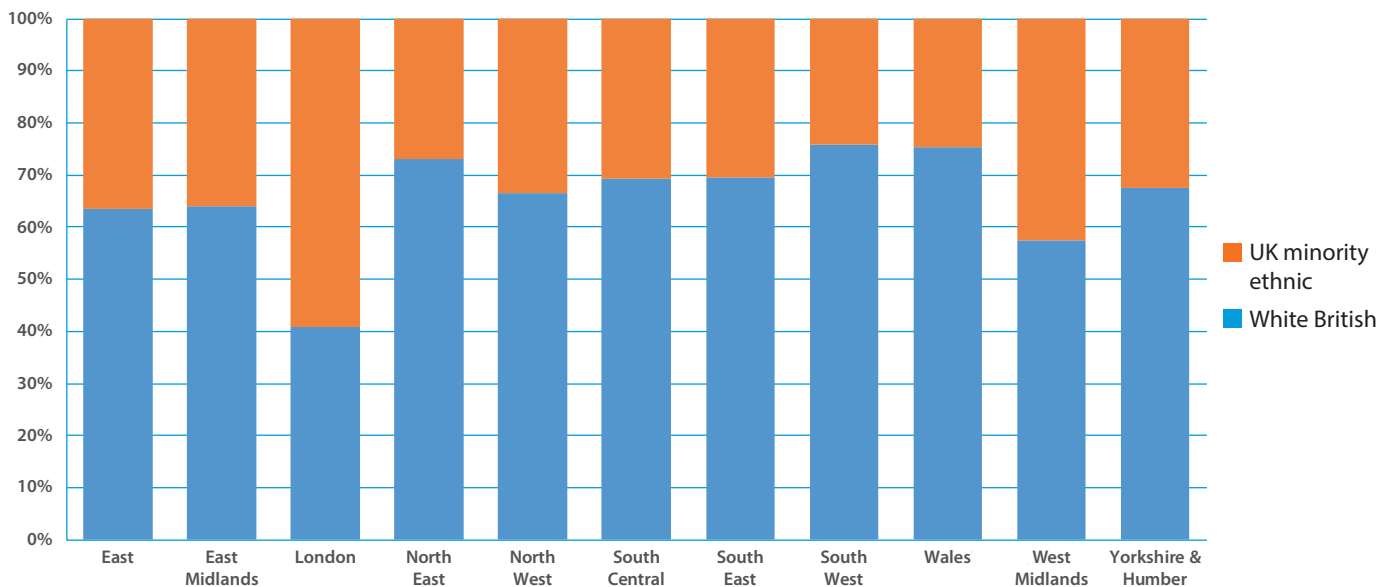
In order to make a fair comparison, Figure 16 shows ethnicity data for both ISC schools and state-funded schools in England in 2021. This shows that the ethnic make-up at ISC schools broadly mirrors that of all state schools.

Fig 16. Ethnicity comparisons for schools in England: Number of pupils and % share (2021)

	ISC schools	% share	State-funded schools	% share
White British	232,201	63.9%	5,410,043	65.9%
UK minority ethnic	131,265	36.1%	2,799,522	34.1%
Total	363,466		8,209,565	

pupils from a UK minority ethnic background at ISC schools has increased in recent years; 23% of ISC pupils were identified as UK minority ethnic in 2009¹, compared with 38% now.

Fig 17. Ethnicity of ISC pupils by region (2022)



Note: some schools do not record ethnicity data; 85% of ISC schools were able to submit ethnicity data, equating to 71% of all ISC pupils. Last year we recorded ethnicity for 72% of ISC pupils. Scotland is not included in the above chart because ethnicity was only known for 18% of pupils in Scotland.

¹ Ethnicity data was first collected in 2009.

International Footprint: Non-British Pupils

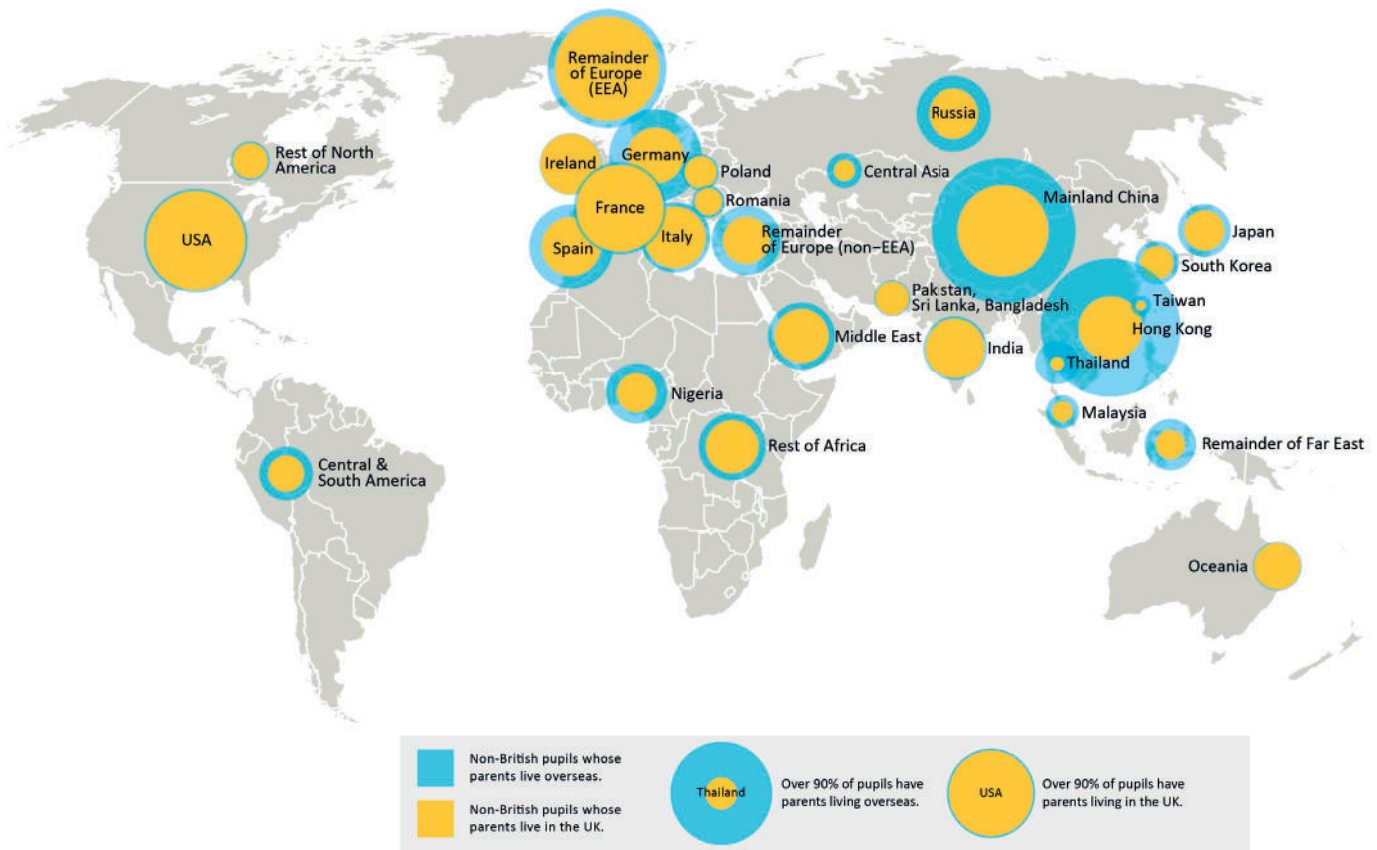
There are two categories of non-British pupils at ISC schools: those whose parents live overseas and those whose parents live in the UK. Figure 19 shows the relative number of pupils at ISC schools from different overseas countries and regions. For each

country or region, it also shows the split between those pupils who have parents living in the UK and those whose parents live overseas. Figure 18 provides the numerical breakdown. In total, 55% of non-British pupils have parents living in the UK.

Fig 18. Non-British pupils at ISC schools

	Total non-British pupils	Parents overseas	Parents in UK	% with parents overseas	% with parents in the UK
Ireland	1,438	64	1,374	4.5%	95.5%
USA	4,051	358	3,693	8.8%	91.2%
Oceania	900	86	814	9.6%	90.4%
France	3,213	380	2,833	11.8%	88.2%
Pakistan, Sri Lanka & Bangladesh	491	67	424	13.6%	86.4%
India	1,609	224	1,385	13.9%	86.1%
Rest of North America	566	102	464	18.0%	82.0%
Poland	491	105	386	21.4%	78.6%
Remainder of Europe (EEA)	5,303	1,220	4,083	23.0%	77.0%
Italy	1,877	456	1,421	24.3%	75.7%
Romania	398	117	281	29.4%	70.6%
Middle East	1,710	617	1,093	36.1%	63.9%
Rest of Africa	1,710	668	1,042	39.1%	60.9%
Japan	1,051	450	601	42.8%	57.2%
South Korea	714	306	408	42.9%	57.1%
Spain	2,664	1,361	1,303	51.1%	48.9%
Remainder of Europe (non-EEA)	1,822	991	831	54.4%	45.6%
Central & South America	1,101	618	483	56.1%	43.9%
Russia	2,187	1,240	947	56.7%	43.3%
Nigeria	1,427	847	580	59.4%	40.6%
Mainland China	8,002	4,882	3,120	61.0%	39.0%
Malaysia	416	259	157	62.3%	37.7%
Germany	3,233	2,054	1,179	63.5%	36.5%
Central Asia	465	301	164	64.7%	35.3%
Remainder of Far East	998	679	319	68.0%	32.0%
Taiwan	158	123	35	77.8%	22.2%
Hong Kong	7,383	5,845	1,538	79.2%	20.8%
Thailand	730	659	71	90.3%	9.7%
Total	56,108	25,079	31,029	44.7%	55.3%

Fig 19. Origin of non-British pupils at ISC schools



International Footprint: Non-British pupils whose parents live overseas

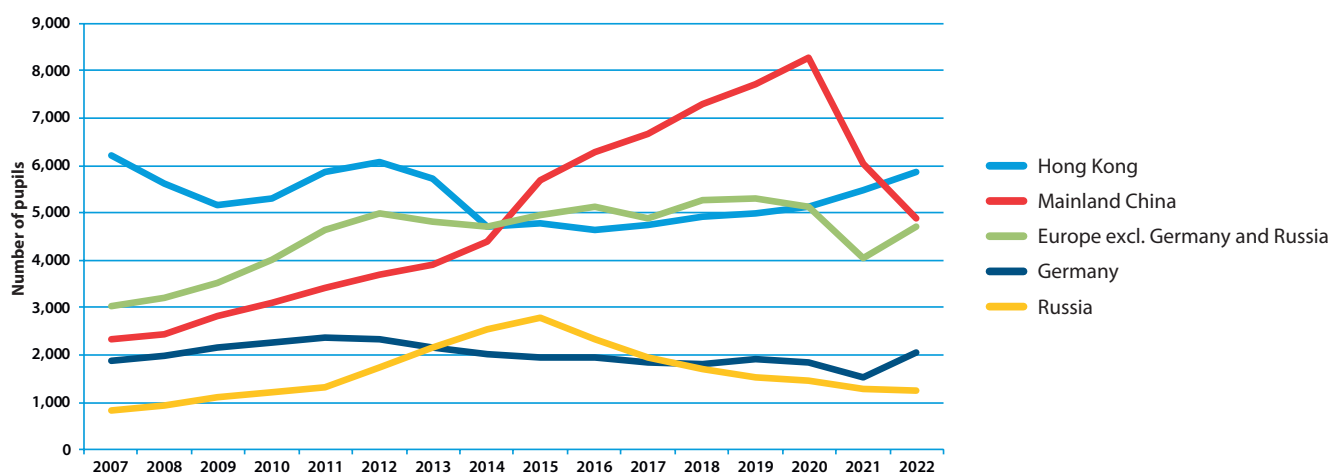
In ISC schools, there are currently 25,079 non-British pupils whose parents live overseas, which represents 4.6% of the total ISC pupil population in 2022. In 2021, there were 24,674 such pupils, or 4.6% of all ISC pupils. If we exclude “international schools” (where more than 90% of the pupils are from overseas), the number drops to 4.4%. For the first time since 2015, the largest number of overseas pupils come from Hong Kong.

Non-British pupils whose parents live overseas are more likely to come to ISC schools in the sixth form and senior year groups than junior year groups: 51% of such pupils are in years 12 and 13, 47% in years 7 to 11, with only 2% in years 6 and below. Not surprisingly, these pupils are much more likely to board: 93% of non-British pupils whose parents live overseas choose to board.

Figure 20 shows trends in non-British pupils whose parents live overseas since 2007 (when the census first started collecting these data), in non-British pupils whose parents live overseas. European countries, with the exception of Russia, show a significant rise with a relaxation of COVID-19 restrictions. The decline in Russian pupils continues a downward trend from 2015. The number of Hong Kong pupils continues to rise, whereas the number of Mainland China pupils continues to fall.

Since 2009, schools wishing to recruit pupils from overseas have been required to hold a Student Visa (previously Tier 4) sponsor licence issued by UK Visas and Immigration (UKVI). With the exception of Ireland, any school recruiting overseas pupils must be on UKVI’s register of licensed sponsors. Our census shows that 656 ISC schools are Student Visa sponsors.

Fig 20. Number of non-British pupils whose parents live overseas from selected countries at ISC schools: 2007-2022



International Footprint: Non-British pupils whose parents live in the UK

In ISC schools there are currently 31,029 non-British pupils whose parents live in the UK, representing 5.7% of all pupils. In 2021 there were 29,562 equating to 5.6% of all pupils. Among these pupils 12,860 come from EEA countries, comprising 2.4% of all pupils. A further 11.9% come from the USA. There has been a notable increase in Hong Kong pupils with parents in the UK, reflecting the UK government's positive stance in offering visas to British Nationals (Overseas). In 2021, there were 496 Hong Kong pupils; in 2022 this has more than trebled to 1,538 and now represents 5.0% of all non-British pupils whose parents live in the UK.

International Footprint: British pupils whose parents live overseas

As well as non-British pupils, there are 4,603 British pupils at ISC schools whose parents serve in HM Forces. In addition, there are 3,498 other British pupils whose parents live overseas (see Appendix One: Table 13, p32 for more details).

Fig 21. Location of overseas campuses of ISC schools

Location	Schools	Pupils
Mainland China	47	27,412
United Arab Emirates	9	10,181
Thailand	7	5,126
Other Middle East	5	3,213
Hong Kong	5	3,156
Malaysia	5	1,754
Singapore	4	3,761
Africa	3	1,163
Other Asia	3	916
Europe	3	905
South Korea	2	2,152
Total	93	59,739

International Footprint: Overseas Schools

A growing number of ISC schools are operating overseas campuses. Figure 21 shows that there are currently 93 such campuses educating a total of 59,739 pupils. This has increased from 81 campuses and 52,975 pupils in 2021. There are, therefore, more pupils being educated in overseas campuses than there are overseas pupils in ISC schools in the UK. Pupils in overseas campuses are not included elsewhere in this census.

Furthermore, there are approximately 110 ISC affiliated schools, i.e., overseas schools in membership of ISC associations. Figure 22 shows where these schools are located. Data from these schools are not included elsewhere in this census.

Overseas campuses of ISC schools are only a small part of the landscape of UK-orientated schools¹ overseas. We estimate there to be over 6,000 such schools worldwide.

Fig 22. Overseas schools in membership of ISC associations

Location	GSA	HMC	IAPS	ISA	SofH
Africa	0	3	12	1	2
Americas	1	4	2	1	0
Asia	1	13	6	0	0
Australasia	1	7	0	0	0
Europe	1	14	9	1	4
Middle East	0	8	17	1	1
Total	4	49	46	4	7

Note: ISC does not perform a detailed audit of overseas schools. Therefore, it is possible that some schools could be counted twice if the school is a member of more than one association.

¹ A school that offers a UK curriculum and/or UK examinations and the curriculum is delivered wholly or partly in English (if English is not one of the country's official languages) or has an English-medium curriculum separate from the country's national curriculum (if English is one of the country's official languages).

School Fees

This academic year, schools have returned to normal in-person education after periods of remote learning in 2020/21 as directed by the UK government. As a result, most of the ISC schools that last year's census reported had frozen or reduced their fees in the last census have increased their fees in this academic year. As last year's census was conducted during a lockdown, we have again needed to employ an estimation method to determine fee changes between 2021 and 2022. We estimate¹ that the average fee increase to be 3.0% (excluding nursery). This is the second lowest fee rise since 2000, with only last year's fee rise being lower.

Fee levels by age group and fee type for UK pupils are displayed in Figure 23. The majority of pupils attend day schools, meaning the typical fee level is £5,218 per term or £15,655 per annum, a rise of 3.1% on 2021.

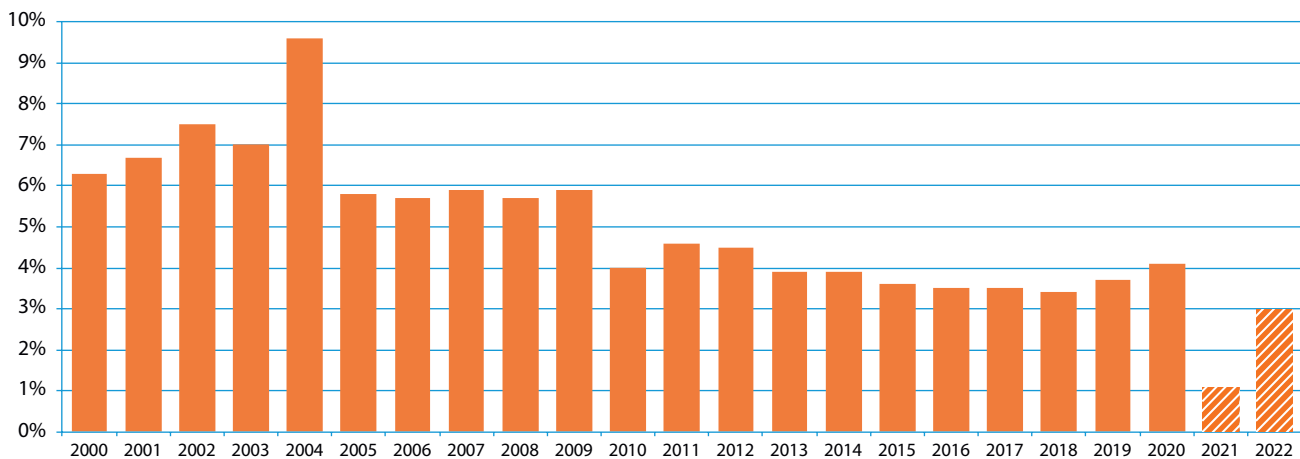
Day school fees vary by region, with average termly fees of just under £4,500 in the North West, rising to just under £6,250 per term for day schools in London (see Table 6 of Appendix One, p27 for more details). While the majority of day schools charge between £3,000 and £5,500 per term, 59 schools charge under £2,000.

Fig 23. School fees (excluding nursery fees)

Figures represent average weighted fees per term. Average fee figures are based on fees at schools completing the census in 2022; percentage change is calculated from the change among the 1,341 schools completing the census in both 2021 and 2022 adjusting for the fee reporting change.

Age group	Boarding fee	Day fee (boarding schools)	Day fee (day schools)
Sixth form	£12,966	£7,684	£5,625
Senior	£12,139	£7,255	£5,495
Junior	£8,951	£5,495	£4,827
Overall	£12,344	£6,944	£5,218
% change	2.9%	2.0%	3.1%

Fig 24. Fee increases since 2000 (like-for-like)²



¹ As most pupils were not boarding on the night of the 2021 census due to COVID-19 government restrictions, boarding school fees were estimated.

² The figures for 2021 and 2022 are estimated.

Scholarships and Bursaries

A total of 180,524 pupils currently receive help with their fees, representing 34.0% of all pupils⁵; the value of this help totals nearly £1.2bn, an increase of 4.8% on last year. A significant majority (82%) of total fee assistance is provided directly from the schools themselves: ISC schools currently provide fee

assistance worth more than £960m annually, an increase of 2.8% on the previous year. £480m of this fee assistance was means-tested, meaning that half of all fee assistance from schools falls in this category.

Fig 25. Contributions to fees (annual)

	Total (pupils) ⁴	Average help received by a pupil (£)	% of all pupils	Total (value £m)
The school	157,888	6,105	29.0	964
The school: means-tested: bursaries	40,174	10,840	7.4	435
The school: means-tested: scholarships	3,228	8,766	0.6	28
The school: means-tested: eligible families ¹	3,115	5,156	0.6	16
The school: non-means-tested: scholarships	58,756	3,369	10.8	198
The school: non-means-tested: eligible families ¹	73,395	3,881	13.5	285
The school: itrust ²	63	19,722	0.01	1.24
Early Years Funding	21,953	2,771	4.0	61
Local Education Authorities ³	4,178	24,288	0.8	101
Government Music and Dance Scheme	1,570	22,881	0.3	36
All other sources	1,979	8,581	0.4	17
Total number of pupils helped	180,524	6,532	34.0	1,179

¹ Includes HM Forces discounts, staff discounts, sibling discounts, and clergy discounts.

² itrust is an IAPS charity supporting low-income families and families with short-term financial difficulties.

³ Excludes data for schools in Northern Ireland, the Channel Islands and the Isle of Man.

⁴ Some pupils receive help from more than one source: they are counted under each category, but are counted only once in the total.

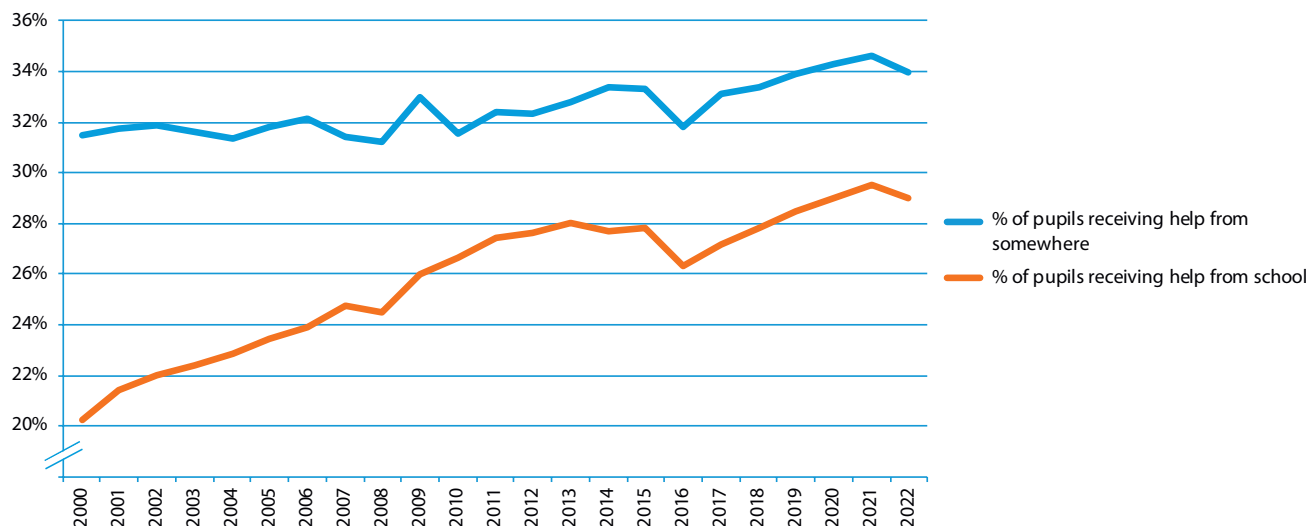
Figure 26 shows that since 2000 there has been a general upward trend of schools providing fee assistance to an increasing number of pupils.

Schools gave more than twice as much assistance in the form of means-tested scholarships and bursaries

as they did non-means-tested scholarships.

The total value of means-tested scholarships and bursaries was £464m, an increase of 1.9% on last year. Bursaries and means-tested scholarships were awarded to 8% of pupils.

Fig 26. Proportion of pupils receiving fee assistance: 2000-2022



⁵ Excludes data for schools in Northern Ireland, the Channel Islands and the Isle of Man.

Figure 27 shows a breakdown of the 40,174 means-tested bursaries and the 3,228 means-tested scholarships provided by ISC schools. Nearly half of all pupils on means-tested bursaries have more than half of their fees remitted and 6,052 pay no fees at all. In contrast, means-tested scholarships tend to be smaller and over half are for less than 25% of fees. A further 1,763 pay no fees as a result of a combination of school sources, e.g., a scholarship and means-tested bursary, meaning a total of 7,815 pay no fees, either via a single school source or a combination of school sources.

Note that schools were asked to provide data on greater than 100% bursaries and scholarships. These contribute to costs

additional to the basic fee (such as school uniform). 684 pupils benefit from these bursaries, a small increase from 680 last year, representing 1.6% of all means-tested bursaries and scholarships.

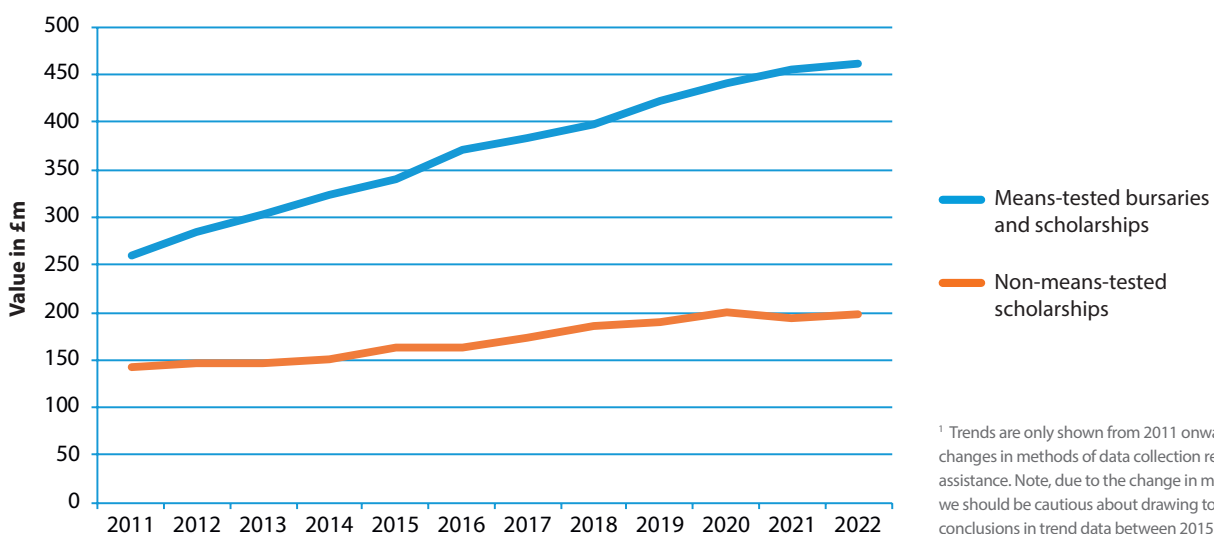
In recent years, there has been a shift from non-means-tested scholarships to means-tested bursaries and scholarships, as illustrated in Figure 28. The total value of means-tested bursaries and scholarships provided by schools has increased by over £200m since 2011, a rise of 78%; the total value of non-means-tested scholarships has risen by 40% over the same period. Note that fee levels have risen by the same amount over the same period, meaning that scholarships have not risen in real terms.

Fig 27. Distribution of means-tested bursaries and means-tested scholarships

Size of means-tested bursary	Number of pupils	% of means-tested bursary pupils	Size of means-tested scholarship	Number of pupils	% of means-tested scholarship pupils
1-25%	9,177	22.8%	1-25%	2,212	68.5%
26-50%	12,092	30.1%	26-50%	428	13.3%
51-75%	6,979	17.4%	51-75%	155	4.8%
76-100%	11,922	29.7%	76-100%	433	13.4%
100%	5,444	13.6%	100%	197	6.1%
>100%	608	1.5%	>100%	76	2.4%
Total	40,170		Total	3,228	

Note: 76-100% category includes >100% means-tested bursaries and scholarships.
Note: 1 school was unable to provide a breakdown of their means-tested bursaries.

Fig 28. Trends in means-tested bursaries and scholarships versus non-means-tested scholarships at ISC schools (2011-2022)¹



¹ Trends are only shown from 2011 onwards due to changes in methods of data collection relating to fee assistance. Note, due to the change in methodology we should be cautious about drawing too many conclusions in trend data between 2015 and 2016.

Public Benefit

In the last census carried out in January 2021, we were unable to report on partnership activity as nearly all types of partnerships had to cease as a result of the government's emergency COVID legislation and guidance for schools. This year, we are able to report in a limited way the number of partnerships with local state schools that have been restarted by ISC schools. The reference period for reporting partnerships was the calendar year 2021, meaning that many COVID restrictions remained in place preventing some schools returning to partnership activities.

The range of partnerships with local state schools is summarised in Figure 29. Partnerships are wide ranging and include reading with younger pupils, preparing A-level pupils for higher education, sharing facilities and seconding teaching staff. In summary, 936 schools are involved in 6,963 partnerships with state schools.

Fig 29. Number of partnership activities

	Number of schools	Number of partnerships
Sport	753	2,362
Academic	607	1,834
Other	728	1,619
Drama	332	606
Music	330	542
Total	936	6,963

Figure 30 is a summary of the facilities available at ISC schools. Whilst some ISC schools have multiple facilities, many do not. For example, among the 1,388 ISC schools there are 86 all-weather athletics tracks, i.e., only 6% of ISC schools.

Assuming all these were shared with state schools, they would only serve a small fraction of the 28,000¹ state-funded schools in the UK.

Fig 30. Breakdown of facilities at ISC schools

	Number of schools	% of all ISC schools
All-weather athletics track	86	6.2%
Astroturf	757	54.5%
Concert hall/theatre	773	55.7%
Dance studio(s)	511	36.8%
Fitness centre	498	35.9%
Rowing facilities	88	6.3%
Sport centre	576	41.5%
Sports field(s)	922	66.4%
Squash court(s)	208	15.0%
Swimming pool	590	42.5%
Tennis court(s)	813	58.6%
Total	1,388	

Finally, beyond partnership work, 96% of ISC schools reported that they have raised money for charities over the last year. Not all schools were able to report the amount raised, but for the 61% of schools that kept such records, the total raised for charity in the year 2021 to 2022 was over £6.5m. We estimate that the true amount to be £10.4m² if we include the 34% of schools that didn't report totals. In addition, 841 ISC schools organise volunteering opportunities for their staff and / or pupils, which involves 176,783 pupils.

¹ Publicly funded mainstream schools taken from "Education and Training Statistics for the United Kingdom".

² Estimate assumes the remaining schools (34%) raised funds in line with the average of £7,800 per school.

Teaching Staff

A total of 57,841 full-time equivalent teachers are employed at ISC schools. The teaching profession (across the education sector as a whole) has a far greater proportion of female teachers, but this imbalance is much less pronounced at ISC schools. 37% of full-time equivalent teachers at ISC schools are men. This compares with 26% in state-funded schools¹.

Fig 31. Teacher numbers and pupil-teacher ratio

Full-time	
Men	19,613
Women	28,079
Total	47,692
Part-time	
Men	3,232
Women	14,069
Total	17,301
Part-time hours	
Men	56,081
Women	273,744
Total	329,826
Overall full-time equivalent (32.5 hours = 1 full-time)	
Men	21,339
Women	36,502
Total	57,841
Pupil-teacher ratio	8.9:1

For more detail see Appendix One, Tables 19 and 21, p36 and Appendix Two, Tables 12 and 14, p49 and p51.

A total of 10,246 full-time equivalent teaching assistants are employed at ISC schools, making up 15% of classroom staff. The equivalent proportion at state-funded schools is 37%, over twice as high. The pupil-teacher ratio at ISC schools is 8.9:1. This compares with an average of 18.0:1¹ across all state-funded schools in 2022.

Fig 32. Teaching assistant numbers

Full-time	
Men	932
Women	5,994
Total	6,926
Part-time	
Men	326
Women	4,988
Total	5,314
Part-time hours	
Men	5,943
Women	101,952
Total	107,896
Overall full-time equivalent (32.5 hours = 1 full-time)	
Men	1,115
Women	9,131
Total	10,246

For more detail on teaching assistants, see Appendix One, Table 20, p36 and Appendix Two, Table 13, p50.

¹ Based on Department for Education (DfE) data 2020/21 (and hence England only), the most recent year for which figures are available.

Entrance to Higher Education

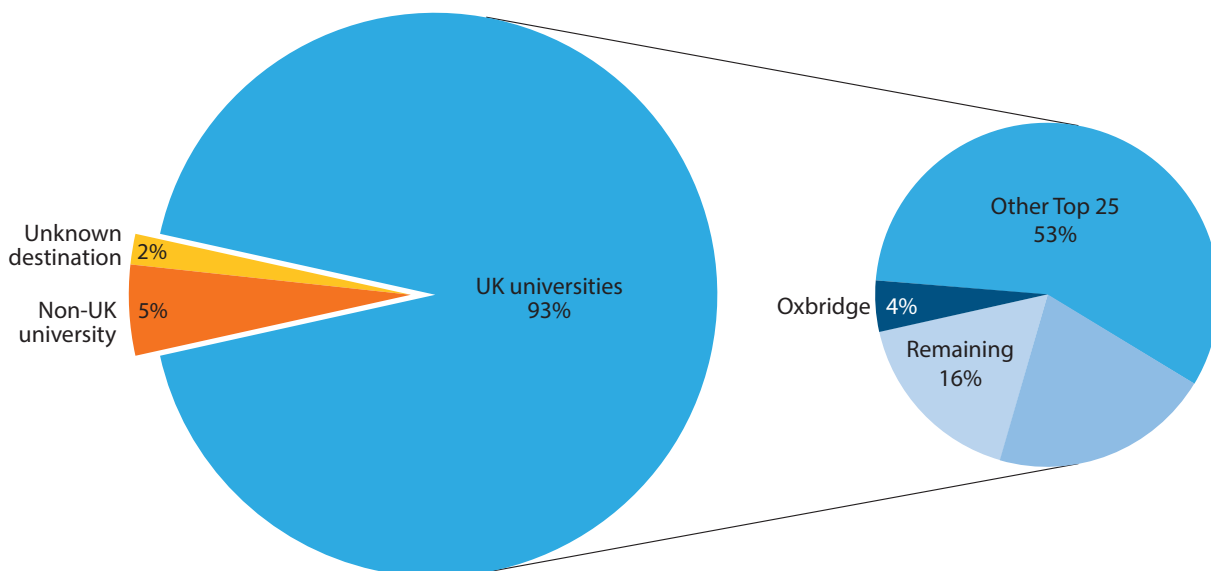
The vast majority of ISC school leavers continue to higher education. Only small numbers take alternative routes such as apprenticeships and employment. This year 2.3% of school leavers went straight to employment in 2021¹. A further 1.1% entered further education and training, including apprenticeships, which is the same as 1.1% last year.

Of those continuing to higher education, 93% do so within the UK. The majority (58%) continue to a Top 25 university²,

including 4% who continue to either Oxford or Cambridge. A further 19% take up places at universities ranked 26-50. Figure 34 shows the top 25 UK universities attended by ISC pupils.

Schools were asked to break down the university destinations of pupils applying for a deferred entry to university. 5,155 pupils (13.4%) chose to defer entry to university. The universities with the highest proportions of deferred entries were Oxford Brookes (19.0%) and Exeter (15.5%)³.

Fig 33. Higher education destination summary



For the 5% of pupils who chose to study outside of the UK, the USA is by far the most popular destination attracting 47% of ISC pupils going to overseas universities, as illustrated in Figure 35. This is an increase compared with last year when 43% chose to study in the USA. ISC pupils go on to a wide range of overseas universities and this range has been expanding year on year. In 2012, fewer than 400 overseas

institutions attracted ISC pupils, now there are 539. The top 10 overseas universities are illustrated in Figure 36.

Finally, pupils choosing to study overseas are not confined to a small number of ISC schools. Pupils from 55% of ISC schools with Year 13 leavers go on to higher education overseas.

¹The year given reflects the year pupils left their school, rather than the year that the figure was published in the census, meaning that the most recent figure is for 2021.

²Top 25/50 universities determined by *The Sunday Times Good University Guide 2022*: <https://www.thetimes.co.uk/article/good-university-guide-in-full-tp6dzs7wn>

³Only universities which are the stated destination of at least 100 students.

Fig 34. Destination of ISC pupils attending UK universities: Top 25
 Number of pupils as a proportion of all ISC pupils attending UK universities.

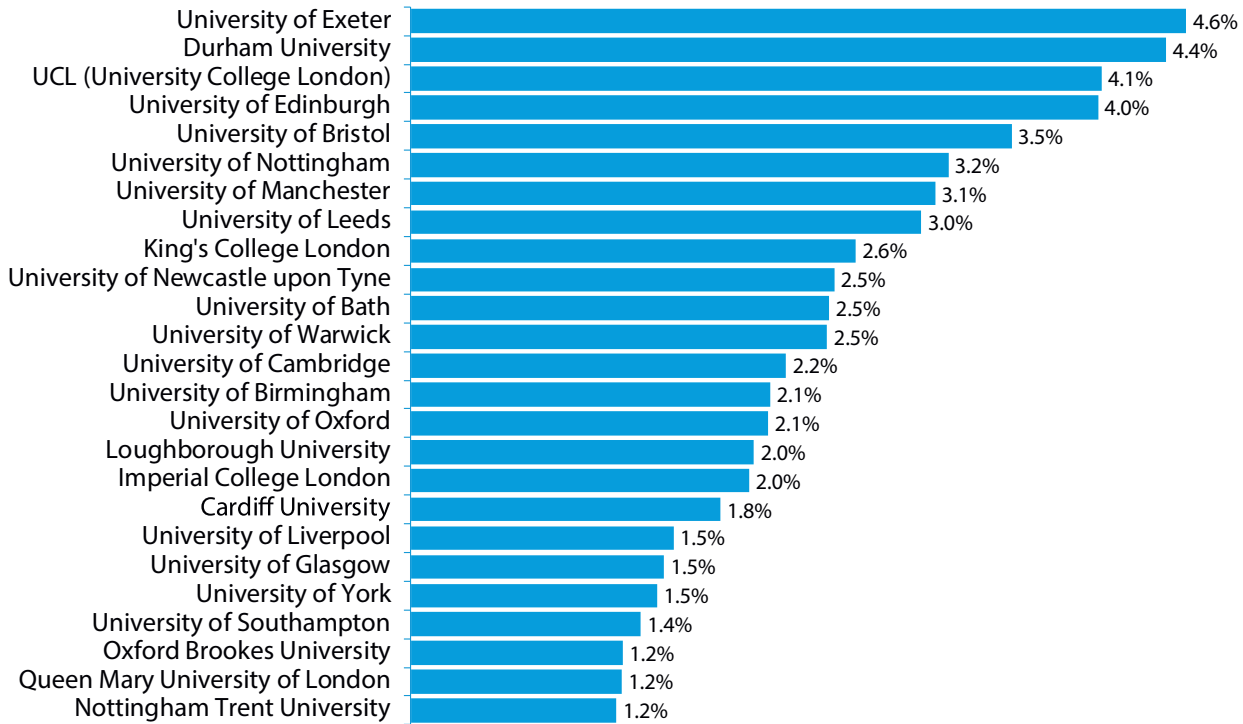


Fig 35. Destination of ISC pupils going to non-UK universities: Countries
 Proportion of all ISC pupils attending non-UK universities.

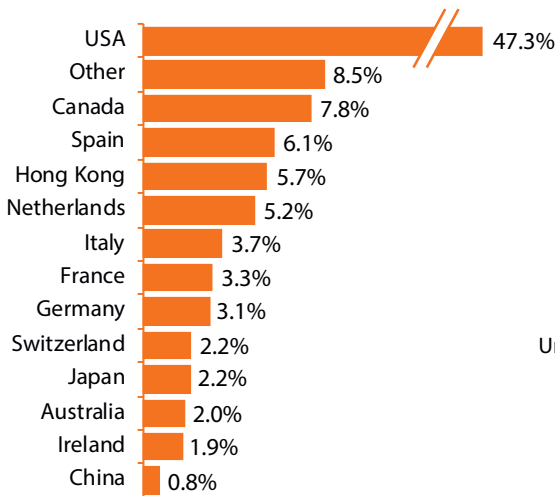
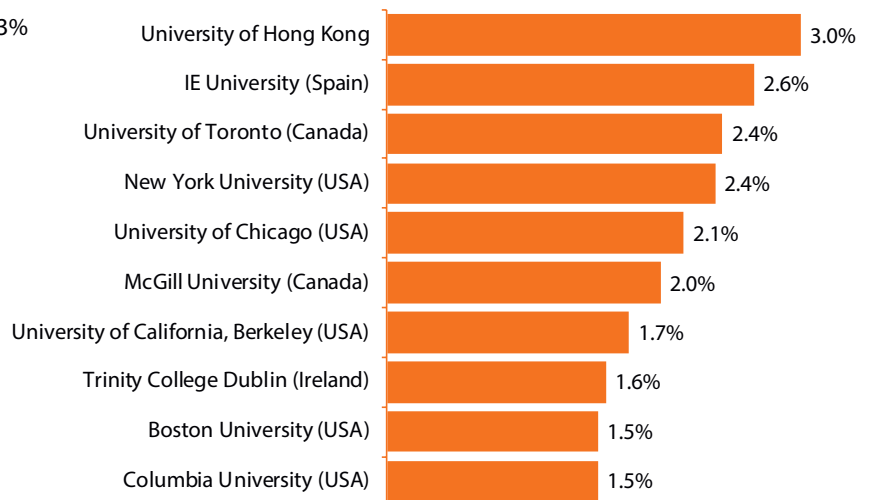


Fig 36. Destination of ISC pupils attending non-UK universities: Top 10
 Proportion of all ISC pupils attending non-UK universities.



Appendix One

Non-Comparative Tables

The tables in Appendix One show figures for all 1,388 schools completing the census this year and therefore cannot be compared to previous years on a like-for-like basis. These tables follow the same format as last year.

Table 1a. School and pupil numbers by association

This table shows total school and pupil numbers broken down by the five heads' associations.

Schools	GSA	HMC ¹	IAPS	ISA	SofH	Total
Charities	135	349	496	250	95	977
Other	6	5	103	312	25	411
Total	141	354	599	562	120	1,388
Not-for-profit	137	354	509	297	98	1,039
For-profit	4	0	90	265	22	349
Total	141	354	599	562	120	1,388
Pupils						
Boarders (boys)	176	25,950	9,147	4,543	3,767	35,062
Boarders (girls)	7,545	20,645	7,115	4,709	3,486	30,170
Day pupils (boys)	3,193	123,197	122,043	56,155	26,653	240,860
Day pupils (girls)	71,428	103,429	115,167	55,285	20,248	238,224
Total (boys)	3,369	149,147	131,190	60,698	30,420	275,922
Total (girls)	78,973	124,074	122,282	59,994	23,734	268,394
Total	82,342	273,221	253,472	120,692	54,154	544,316

¹ HMC schools and pupil numbers include schools within a foundation with a HMC member as Executive Head or Principal.

Table 1b. School and pupil numbers by association (further breakdown)

For some ISC schools the heads are in membership of more than one association. For example, a school with pupils from ages 3 to 18 may have a head in membership of IAPS and HMC, but IAPS may only regard the pupils in the junior part of the school as counting towards their membership. Table 1b therefore repopulates Table 1a allowing for this subtlety. For example, there are fewer pupils in IAPS schools in Table 1b due to the exclusions of senior pupils recorded under their membership in Table 1a. The figures in this table should not be compared to any of the other tables in this census. The only figures that are comparable are those in Table 1b of previous census reports from 2013 onwards.

Schools	GSA	HMC ¹	IAPS	ISA	SofH	Total
Charities	136	349	503	256	98	977
Other	6	5	105	312	25	411
Total	142	354	608	568	123	1,388
Not-for-profit	138	354	517	303	101	1,039
For-profit	4	0	91	265	22	349
Total	142	354	608	568	123	1,388
Pupils						
Boarders (boys)	176	25,950	4,150	4,543	3,767	35,062
Boarders (girls)	7,545	20,645	2,364	4,709	3,486	30,170
Day pupils (boys)	3,193	123,197	86,390	56,155	26,653	240,860
Day pupils (girls)	71,428	103,429	73,336	55,285	20,248	238,224
Total (boys)	3,369	149,147	90,540	60,698	30,420	275,922
Total (girls)	78,973	124,074	75,700	59,994	23,734	268,394
Total	82,342	273,221	166,240	120,692	54,154	544,316

¹ HMC schools and pupil numbers include schools within a foundation with a HMC member as Executive Head or Principal.

Table 1c. School and pupil numbers by category of school

This table shows total school and pupil numbers, including a breakdown by category of school. The girls at “single-sex: boys” schools and the boys at “single-sex: girls” schools are all in the nursery.

Schools	Senior	Mixed-age	Junior	Single-sex: boys'	Single-sex: girls'	Co-ed	Schools with boarders	Day schools	Total
Charities	193	377	407	86	145	746	359	618	977
Other	59	116	236	24	15	372	82	329	411
Total	252	493	643	110	160	1,118	441	947	1,388
Not-for-profit	201	404	434	92	152	795	371	668	1,039
For-profit	51	89	209	18	8	323	70	279	349
Total	252	493	643	110	160	1,118	441	947	1,388
Pupils									
Boarders (boys)	22,239	9,126	3,697	6,573	0	28,489	35,062	0	35,062
Boarders (girls)	19,637	8,506	2,027	0	7,476	22,694	30,170	0	30,170
Day pupils (boys)	44,355	115,579	80,926	41,014	210	199,636	77,385	163,475	240,860
Day pupils (girls)	37,874	136,149	64,201	129	71,330	166,765	68,307	169,917	238,224
Total (boys)	66,594	124,705	84,623	47,587	210	228,125	112,447	163,475	275,922
Total (girls)	57,511	144,655	66,228	129	78,806	189,459	98,477	169,917	268,394
Total	124,105	269,360	150,851	47,716	79,016	417,584	210,924	333,392	544,316

Table 2. Pupil numbers by age

This table shows the number of pupils in all ISC schools by age, gender and day/boarding.

Age on 31st August 2021	Boarders (boys)	Day pupils (boys)	Boarders (girls)	Day pupils (girls)	Total
0-2	0	6,086	0	5,937	12,023
3	0	8,212	0	7,939	16,151
4	1	10,340	1	10,309	20,651
5	0	11,132	0	10,820	21,952
6	3	11,516	2	11,700	23,221
7	44	13,247	50	12,685	26,026
8	238	14,308	149	13,814	28,509
9	434	15,737	289	15,273	31,733
10	830	16,896	498	16,410	34,634
11	1,569	20,901	1,539	20,523	44,532
12	2,103	20,749	1,979	20,331	45,162
13	4,234	20,686	3,408	20,774	49,102
14	5,067	20,422	4,139	20,486	50,114
15	5,598	19,446	4,837	19,885	49,766
16	6,805	15,611	6,232	15,669	44,317
17	6,763	14,533	5,835	14,559	41,690
18	1,207	873	1,060	910	4,050
19	166	165	152	200	683
Total	35,062	240,860	30,170	238,224	544,316

**Table 3. Pupil numbers
by year group**

This table shows the number of pupils in all ISC schools by year group, gender and day/boarding.

Year group	Boarders (boys)	Day pupils (boys)	Boarders (girls)	Day pupils (girls)	Total
Nursery	0	14,367	0	13,907	28,274
Reception	1	10,433	1	10,257	20,692
Year 1	0	11,193	0	10,939	22,132
Year 2	0	11,526	2	11,681	23,209
Year 3	44	13,284	50	12,694	26,072
Year 4	254	14,271	154	13,838	28,517
Year 5	443	15,743	284	15,230	31,700
Year 6	840	16,849	487	16,405	34,581
Year 7	1,629	20,925	1,612	20,544	44,710
Year 8	2,139	20,894	1,988	20,294	45,315
Year 9	4,417	20,677	3,535	20,876	49,505
Year 10	5,392	20,567	4,401	20,670	51,030
Year 11	5,617	19,424	4,723	19,775	49,539
Year 12	7,306	15,590	6,845	15,838	45,579
Year 13	6,980	15,117	6,088	15,276	43,461
Total	35,062	240,860	30,170	238,224	544,316

**Table 4. New pupil numbers
by year group**

This table shows the number of pupils new to their school this academic year by year group, gender and day/boarding.

Year group	Boarders (boys)	Day pupils (boys)	Boarders (girls)	Day pupils (girls)	Total
Nursery	0	7,503	0	7,370	14,873
Reception	1	4,815	1	4,713	9,530
Year 1	0	1,579	0	1,357	2,936
Year 2	0	1,340	0	1,308	2,648
Year 3	29	3,179	33	2,597	5,838
Year 4	141	1,961	68	1,703	3,873
Year 5	133	2,006	81	2,033	4,253
Year 6	220	1,688	131	1,679	3,718
Year 7	703	11,368	1,071	11,995	25,137
Year 8	420	1,534	440	1,484	3,878
Year 9	3,621	4,307	2,282	2,874	13,084
Year 10	1,259	1,023	1,305	1,344	4,931
Year 11	774	373	832	385	2,364
Year 12	2,685	2,008	3,437	3,489	11,619
Year 13	213	323	238	339	1,113
Total	10,199	45,007	9,919	44,670	109,795

Table 5. Pupil numbers by region

This table shows the number of pupils by region. Please see Appendix Three, Figure 1 for definitions of regions.

Region ¹	No. of schools	Boarders (boys)	Day pupils (boys)	Boarders (girls)	Day pupils (girls)	Total boarders	Total day pupils	Total pupils
London	307	1,742	52,673	642	55,502	2,384	108,175	110,559
South Central	222	9,721	30,142	8,491	30,939	18,212	61,081	79,293
South East	200	6,373	34,105	5,970	32,066	12,343	66,171	78,514
East	151	3,092	29,802	3,000	27,797	6,092	57,599	63,691
South West	94	4,323	14,037	3,909	14,011	8,232	28,048	36,280
West Midlands	103	2,422	16,047	2,144	15,874	4,566	31,921	36,487
North West	90	1,303	17,420	942	16,536	2,245	33,956	36,201
East Midlands	69	2,397	10,248	1,609	10,215	4,006	20,463	24,469
Yorkshire and Humber	62	1,244	11,607	1,613	11,470	2,857	23,077	25,934
Scotland	34	1,267	11,516	1,048	11,620	2,315	23,136	25,451
Wales	19	719	2,985	543	3,185	1,262	6,170	7,432
North East	17	186	3,369	114	3,637	300	7,006	7,306
All²	1,388	35,062	240,860	30,170	238,224	65,232	479,084	544,316

¹ Northern Ireland, the Channel Islands and the Isle of Man are not listed due to the small number of schools in these regions.

² The total includes data for schools in Northern Ireland, the Channel Islands and the Isle of Man.

Table 6. Fees by region (including nursery fees)¹

This table shows average termly fees by region and type of school. Please see Appendix Three, Figure 1 for definitions of regions.

Region ¹	Boarding fee	Day fee (boarding schools)	Day fee (day schools)
London	£14,025	£7,991	£6,240
South Central	£12,950	£7,521	£5,286
South East	£12,652	£6,254	£5,687
East	£11,585	£7,031	£5,380
West Midlands	£12,602	£5,245	£4,413
South West	£12,285	£5,059	£4,601
North West	£10,632	£5,255	£3,808
East Midlands	£12,141	£6,777	£4,587
Yorkshire and Humber	£8,229	£5,245	£4,215
Scotland	£12,034	£7,385	£4,360
Wales	£12,664	£6,269	£4,294
North East	£9,226	£4,741	£4,400
All²	£12,344	£6,836	£5,132

¹ Northern Ireland, the Channel Islands and the Isle of Man are not listed due to the small number of schools in these regions.

² The total includes data for schools in Northern Ireland, the Channel Islands and the Isle of Man.

Table 7. Fees by age groups (including nursery fees)

This table shows average termly fees for different age groups in ISC schools.

Age group	Boarding fee	Day fee (boarding schools)	Day fee (day schools)
Sixth form	£12,966	£7,684	£5,625
Senior	£12,139	£7,255	£5,495
Junior	£8,951	£5,495	£4,827
Nursery		£3,345	£3,857
Overall including Nursery	£12,344	£6,836	£5,132

Table 8a. Contributions to fees: senior, mixed-age and junior schools (termly values)

For ISC schools categorised by pupil age, this table shows the breakdown of contributions to fees by type of contribution.

	Senior (pupils)	Senior (value £m)	Mixed-age (pupils)	Mixed-age (value £m)	Junior (pupils)	Junior (value £m)	Total (pupils)	Total (value £m)	% of all pupils
The school	43,869	128.83	82,089	151.23	31,930	41.25	157,888	321.31	29.7
The school: means-tested: bursaries	12,876	62.99	21,277	68.47	6,021	13.70	40,174	145.16	7.6
The school: means-tested: scholarships	1,188	6.41	1,880	2.70	160	0.31	3,228	9.43	0.6
The school: means-tested: eligible families ¹	879	2.43	1,292	1.50	944	1.42	3,115	5.35	0.6
The school: non-means-tested: scholarships	23,438	29.71	32,399	33.59	2,919	2.68	58,756	65.99	11.1
The school: non-means-tested: eligible families ¹	12,505	27.27	37,122	44.95	23,768	22.73	73,395	94.96	13.8
The school: itrust ²	0	0.00	4	0.00	59	0.41	63	0.41	0.01
Early Years Funding	0	0.00	6,519	6.62	15,434	13.66	21,953	20.28	4.1
Local Education Authorities ³	655	5.39	3,305	27.69	218	0.75	4,178	33.83	0.8
Government Music and Dance Scheme	808	6.10	697	5.62	65	0.26	1,570	11.97	0.3
All other sources	771	2.56	820	1.98	388	1.12	1,979	5.66	0.4
Total	44,803	142.88	90,664	193.14	45,057	57.03	180,524	393.05	34.0
Number of pupils helped as a % of all pupils	37.1		34.8		30.0		34.0		

¹ Includes HM Forces discounts, staff discounts, sibling discounts and clergy discounts.

² itrust is an IAPS charity supporting low-income families and families with short-term financial difficulties.

³ Excludes data for schools in Northern Ireland, the Channel Islands and the Isle of Man.

Table 8b. Contributions to fees: single-sex and co-educational schools (termly values)

For ISC schools categorised by pupil gender, this table shows the breakdown of contributions to fees by type of contribution.

	Single-sex: boys' (pupils)	Single-sex: boys' (value £m)	Single-sex: girls' (pupils)	Single-sex: girls' (value £m)	Co-ed (pupils)	Co-ed (value £m)	Total (pupils)	Total (value £m)	% of all pupils
The school	8,830	26.57	19,961	41.81	129,097	252.92	157,888	321.31	29.7
The school: means-tested: bursaries	3,173	15.75	5,837	24.30	31,164	105.11	40,174	145.16	7.6
The school: means-tested: scholarships	165	0.93	159	0.62	2,904	7.88	3,228	9.43	0.6
The school: means-tested: eligible families ¹	406	1.67	444	0.79	2,265	2.89	3,115	5.35	0.6
The school: non-means-tested: scholarships	3,778	3.95	10,191	8.95	44,787	53.09	58,756	65.99	11.1
The school: non-means-tested: eligible families ¹	2,211	3.90	6,042	7.15	65,142	83.91	73,395	94.96	13.8
The school: itrust ²	30	0.36	2	0.00	31	0.05	63	0.41	0.01
Early Years Funding	659	0.59	1,163	1.00	20,131	18.69	21,953	20.28	4.1
Local Education Authorities ³	397	2.37	74	0.32	3,707	31.13	4,178	33.83	0.8
Government Music and Dance Scheme	10	0.01	1	0.00	1,559	11.96	1,570	11.97	0.3
All other sources	164	0.62	221	0.66	1,594	4.38	1,979	5.66	0.4
Total	9,587	30.15	21,032	43.81	149,905	319.08	180,524	393.05	34.0
Number of pupils helped as a % of all pupils	21.6		27.4		36.5		34.0		

¹ Includes HM Forces discounts, staff discounts, sibling discounts and clergy discounts.

² itrust is an IAPS charity supporting low-income families and families with short-term financial difficulties.

³ Excludes data for schools in Northern Ireland, the Channel Islands and the Isle of Man.

Table 8c. Contributions to fees: day and boarding schools (termly values)

For ISC schools categorised by day and boarding, this table shows the breakdown of contributions to fees by type of contribution.

	Schools with boarders (pupils)	Schools with boarders (value £m)	Day schools (pupils)	Day schools (value £m)	Total (pupils)	Total (value £m)	% of all pupils
The school	78,219	198.89	79,669	122.41	157,888	321.31	29.7
The school: means-tested: bursaries	20,613	84.52	19,561	60.64	40,174	145.16	7.6
The school: means-tested: scholarships	2,142	7.60	1,086	1.83	3,228	9.43	0.6
The school: means-tested: eligible families ¹	1,153	3.19	1,962	2.17	3,115	5.35	0.6
The school: non-means-tested: scholarships	33,613	43.95	25,143	22.04	58,756	65.99	11.1
The school: non-means-tested: eligible families ¹	34,396	59.26	38,999	35.70	73,395	94.96	13.8
The school: itrust ²	44	0.38	19	0.03	63	0.41	0.00
Early Years Funding	4,008	3.55	17,945	16.73	21,953	20.28	4.1
Local Education Authorities ³	1,233	8.96	2,945	24.87	4,178	33.83	0.8
Government Music and Dance Scheme	1,561	11.94	9	0.03	1,570	11.97	0.3
All other sources	1,055	3.55	924	2.11	1,979	5.66	0.4
Total	83,314	226.89	97,210	166.15	180,524	393.05	34.0
Number of pupils helped as a % of all pupils	40.5		29.8		34.0		

¹ Includes HM Forces discounts, staff discounts, sibling discounts and clergy discounts.

² itrust is an IAPS charity supporting low-income families and families with short-term financial difficulties.

³ Excludes data for schools in Northern Ireland, the Channel Islands and the Isle of Man.

Table 9. Non-British pupils whose parents live overseas

This table shows the number of non-British pupils whose parents live overseas by country/area of residence.

	Senior	Mixed-age	Junior	Single-sex: boys ¹	Single-sex: girls ¹	Co-ed	Schools with boarders	Day schools	Total
France	190	137	53	26	21	333	361	19	380
Germany	960	1,082	12	35	61	1,958	2,046	8	2,054
Russia	860	332	48	49	44	1,147	1,208	32	1,240
Spain	536	528	297	84	143	1,134	1,327	34	1,361
Ireland	25	37	2	8	4	52	63	1	64
Italy	301	147	8	7	10	439	448	8	456
Poland	65	38	2	2	9	94	104	1	105
Romania	92	23	2	3	7	107	116	1	117
Remainder of Europe (EEA)	719	461	40	43	65	1,112	1,191	29	1,220
Remainder of Europe (non-EEA)	669	308	14	17	36	938	970	21	991
Nigeria	579	219	49	35	118	694	800	47	847
Rest of Africa	415	231	22	12	53	603	636	32	668
USA	184	146	28	24	40	294	342	16	358
Rest of North America	64	29	9	10	9	83	98	4	102
Central and South America	341	268	9	17	71	530	606	12	618
Middle East	443	156	18	26	33	558	562	55	617
Hong Kong	3,380	2,301	164	453	1,008	4,384	5,732	113	5,845
Mainland China	2,975	1,666	241	264	694	3,924	4,656	226	4,882
Taiwan	82	37	4	2	16	105	110	13	123
Japan	267	122	61	42	27	381	444	6	450
South Korea	239	45	22	24	46	236	287	19	306
Malaysia	220	37	2	22	28	209	250	9	259
Thailand	457	167	35	51	85	523	616	43	659
India	134	78	12	18	19	187	209	15	224
Pakistan, Sri Lanka and Bangladesh	43	20	4	1	6	60	57	10	67
Central Asia	231	67	3	9	8	284	284	17	301
Remainder of Far East	529	136	14	25	62	592	633	46	679
Oceania	53	28	5	3	12	71	80	6	86
Total	15,053	8,846	1,180	1,312	2,735	21,032	24,236	843	25,079
As a % of all pupils	12.1%	3.3%	0.8%	2.7%	3.5%	5.0%	11.5%	0.3%	4.6%

Table 10. Non-British pupils whose parents live in the UK

This table shows the number of non-British pupils whose parents live in the UK by country/area of nationality.

	Senior	Mixed-age	Junior	Single-sex: boys'	Single-sex: girls'	Co-ed	Schools with boarders	Day schools	Total
France	446	1,841	546	243	368	2,222	658	2,175	2,833
Germany	274	573	332	155	269	755	445	734	1,179
Russia	245	355	347	149	151	647	396	551	947
Spain	234	824	245	116	210	977	311	992	1,303
Ireland	444	653	277	139	292	943	618	756	1,374
Italy	416	641	364	212	296	913	424	997	1,421
Poland	103	212	71	28	79	279	153	233	386
Romania	69	134	78	19	35	227	98	183	281
Remainder of Europe (EEA)	1,128	1,884	1,071	490	740	2,853	1,582	2,501	4,083
Remainder of Europe (non-EEA)	213	360	258	90	115	626	339	492	831
Nigeria	161	299	120	46	98	436	334	246	580
Rest of Africa	231	545	266	61	161	820	449	593	1,042
USA	568	1,897	1,228	300	526	2,867	1,620	2,073	3,693
Rest of North America	98	236	130	51	77	336	167	297	464
Central and South America	99	248	136	34	55	394	153	330	483
Middle East	142	720	231	55	88	950	165	928	1,093
Hong Kong	448	842	248	145	339	1,054	923	615	1,538
Mainland China	681	1,463	976	503	786	1,831	1,436	1,684	3,120
Taiwan	7	15	13	3	5	27	17	18	35
Japan	110	228	263	45	116	440	154	447	601
South Korea	106	172	130	52	133	223	145	263	408
Malaysia	40	72	45	29	43	85	57	100	157
Thailand	21	32	18	3	8	60	49	22	71
India	185	787	413	171	363	851	281	1,104	1,385
Pakistan, Sri Lanka and Bangladesh	90	253	81	56	103	265	84	340	424
Central Asia	46	66	52	16	27	121	64	100	164
Remainder of Far East	99	129	91	21	74	224	158	161	319
Oceania	217	347	250	71	145	598	358	456	814
Total	6,921	15,828	8,280	3,303	5,702	22,024	11,638	19,391	31,029
As a % of all pupils	5.6%	5.9%	5.5%	6.9%	7.2%	5.3%	5.5%	5.8%	5.7%

Table 11. New non-British pupils whose parents live overseas

This table shows the number of new non-British pupils whose parents live overseas by country/area of residence.

	Senior	Mixed-age	Junior	Single-sex: boys'	Single-sex: girls'	Co-ed	Schools with boarders	Day schools	Total
France	84	73	37	4	12	178	186	8	194
Germany	617	757	9	19	46	1,318	1,378	5	1,383
Russia	349	127	16	15	8	469	473	19	492
Spain	363	400	257	57	113	850	1,006	14	1,020
Ireland	10	13	1	3	3	18	23	1	24
Italy	138	56	5	1	4	194	192	7	199
Poland	24	12	1	0	2	35	36	1	37
Romania	36	9	1	0	2	44	46	0	46
Remainder of Europe (EEA)	299	196	17	12	18	482	491	21	512
Remainder of Europe (non-EEA)	293	130	5	6	10	412	416	12	428
Nigeria	231	81	22	14	34	286	302	32	334
Rest of Africa	189	99	14	3	20	279	280	22	302
USA	78	69	7	8	12	134	146	8	154
Rest of North America	33	21	3	1	4	52	55	2	57
Central and South America	268	204	7	12	62	405	469	10	479
Middle East	238	69	8	7	10	298	281	34	315
Hong Kong	1,326	834	85	152	375	1,718	2,173	72	2,245
Mainland China	1,117	497	70	79	215	1,390	1,614	70	1,684
Taiwan	33	14	1	1	3	44	38	10	48
Japan	91	41	17	9	9	131	148	1	149
South Korea	94	9	6	4	6	99	97	12	109
Malaysia	104	17	2	5	6	112	117	6	123
Thailand	195	68	21	14	27	243	255	29	284
India	59	37	10	11	1	94	99	7	106
Pakistan, Sri Lanka and Bangladesh	22	10	4	0	4	32	30	6	36
Central Asia	114	27	1	1	2	139	134	8	142
Remainder of Far East	252	46	7	6	21	278	274	31	305
Oceania	21	11	2	2	3	29	33	1	34
Total	6,678	3,927	636	446	1,032	9,763	10,792	449	11,241
As a % of all new pupils	21.9%	8.0%	2.1%	5.0%	7.2%	11.3%	22.1%	0.7%	10.2%

Table 12. New non-British pupils whose parents live in the UK

This table shows the number of new non-British pupils whose parents live in the UK by country/area of nationality.

	Senior	Mixed-age	Junior	Single-sex: boys'	Single-sex: girls'	Co-ed	Schools with boarders	Day schools	Total
France	111	326	164	40	52	509	168	433	601
Germany	69	123	71	26	38	199	98	165	263
Russia	66	78	63	22	24	161	102	105	207
Spain	43	159	70	24	33	215	78	194	272
Ireland	86	95	65	18	51	177	106	140	246
Italy	96	119	74	46	45	198	90	199	289
Poland	22	49	19	6	15	69	42	48	90
Romania	22	26	21	4	5	60	25	44	69
Remainder of Europe (EEA)	256	383	221	104	121	635	377	483	860
Remainder of Europe (non-EEA)	56	73	72	14	24	163	81	120	201
Nigeria	52	82	42	7	27	142	97	79	176
Rest of Africa	63	133	65	16	46	199	114	147	261
USA	140	468	366	62	107	805	412	562	974
Rest of North America	28	56	49	10	22	101	44	89	133
Central and South America	38	72	31	9	16	116	45	96	141
Middle East	69	219	87	20	31	324	46	329	375
Hong Kong	267	489	141	71	178	648	510	387	897
Mainland China	246	482	281	149	266	594	468	541	1,009
Taiwan	2	3	4	1	1	7	6	3	9
Japan	30	57	77	18	16	130	39	125	164
South Korea	32	50	47	15	31	83	53	76	129
Malaysia	12	12	19	5	7	31	16	27	43
Thailand	9	12	6	0	4	23	17	10	27
India	49	187	132	45	89	234	82	286	368
Pakistan, Sri Lanka and Bangladesh	34	58	31	20	20	83	37	86	123
Central Asia	10	26	18	8	4	42	19	35	54
Remainder of Far East	17	39	28	5	15	64	37	47	84
Oceania	61	79	85	17	21	187	106	119	225
Total	1,986	3,955	2,349	782	1,309	6,199	3,315	4,975	8,290
As a % of all new pupils	6.5%	8.1%	7.8%	8.8%	9.2%	7.2%	6.8%	8.2%	7.6%

Table 13. British pupils with parents living overseas

This table shows the number of British pupils whose parents live abroad or serve in HM Forces, as well as the number who are new to their school this year.

British pupils whose parents:	Senior	Mixed-age	Junior	Single-sex: boys'	Single-sex: girls'	Co-ed	Schools with boarders	Day schools	Total
Live abroad	2,323	1,008	167	401	478	2,619	3,306	192	3,498
Serve in HM Forces	1,413	1,894	1,296	175	285	4,143	4,030	573	4,603
New British pupils whose parents:									
Live abroad	757	296	45	104	124	870	1,033	65	1,098
Serve in HM Forces	215	315	279	33	35	741	717	92	809

Table 14. Destination of post-18 school leavers

This table shows the percentage of school leavers in all ISC schools arriving at various destinations post-18.

Non-deferred university entries	Senior	Mixed-age	Single-sex: boys'	Single-sex: girls'	Co-ed	Schools with boarders	Day schools	Total
% to UK universities	70.7	75.1	75.7	77.2	71.7	68.3	79.1	72.9
% to overseas universities	5.1	3.2	4.1	3.5	4.3	5.6	2.2	4.2
% to unknown university	1.6	1.1	0.4	0.7	1.6	1.7	0.9	1.4
Deferred university entries								
% to UK universities	8.7	5.2	7.6	6.1	7.0	8.5	4.8	6.9
% to overseas universities	0.2	0.1	0.4	0.1	0.1	0.2	0.1	0.1
% to unknown university (incl. planning post-qualification application)	6.0	4.9	7.3	6.4	5.1	5.9	5.0	5.5
Other								
% to other higher education courses	1.4	1.7	0.7	1.6	1.6	1.6	1.4	1.5
% to further education or training	0.8	1.2	1.0	0.7	1.1	1.1	0.9	1.0
% to re-take A-levels	0.5	0.6	1.1	0.5	0.5	0.4	0.7	0.5
% to employment	1.6	3.0	0.6	1.4	2.6	1.9	2.8	2.3
% to other	1.1	1.4	0.5	0.9	1.4	1.3	1.3	1.3
% to unknown	2.3	2.5	0.5	1.0	2.9	3.4	1.0	2.4
Total number recorded	21,068	21,669	3,952	6,440	32,345	24,415	18,322	42,737

Table 15. Destination of pupils going to non-UK universities

This table shows the destination of post-18 school leavers going to non-UK universities from ISC schools.

	Senior	Mixed-age	Single-sex: boys'	Single-sex: girls'	Co-ed	Schools with boarders	Day schools	Total
USA	532	310	128	131	583	639	203	842
Canada	83	56	17	17	105	100	39	139
Spain	58	51	2	7	100	70	39	109
Hong Kong	72	30	6	12	84	98	4	102
Netherlands	51	42	3	8	82	74	19	93
Italy	37	29	4	4	58	55	11	66
France	24	34	1	8	49	27	31	58
Germany	32	24	2	6	48	55	1	56
Other Countries	29	25	3	5	46	38	16	54
Switzerland	25	15	2	5	33	33	7	40
Japan	30	10	3	1	36	33	7	40
Australia	26	9	0	6	29	29	6	35
Ireland	24	10	2	7	25	28	6	34
China	9	5	0	1	13	13	1	14
Bulgaria	6	5	0	3	8	4	7	11
Czechia	5	5	0	0	10	8	2	10
Austria	5	5	0	0	10	10	0	10
Thailand	5	3	1	0	7	8	0	8
Poland	3	5	0	1	7	3	5	8
South Korea	3	3	1	0	5	4	2	6
Belgium	2	4	0	1	5	3	3	6
Russia	4	2	0	1	5	4	2	6
Hungary	3	2	0	0	5	5	0	5
Singapore	3	2	0	0	5	5	0	5
New Zealand	4	1	0	1	4	3	2	5
UAE	4	1	0	0	5	4	1	5
Malta	3	1	0	1	3	4	0	4
Vietnam	3	1	0	0	4	3	1	4
Denmark	2	2	0	0	4	4	0	4
Total	1,087	692	175	226	1,378	1,364	415	1,779
% of all pupils going to higher education	5.5%	3.5%	4.6%	3.7%	4.7%	6.1%	2.4%	4.5%

Table 16. Size of schools

This table shows all ISC schools by type and various size brackets.

School size	Senior	Mixed-age	Junior	Single-sex: boys'	Single-sex: girls'	Co-ed	Schools with boarders	Day schools	Total
1 - 50	18	20	21	2	1	56	7	52	59
51 - 100	18	23	70	6	3	102	14	97	111
101 - 150	16	28	123	15	15	137	26	141	167
151 - 200	10	43	85	13	12	113	34	104	138
201 - 250	15	26	87	9	12	107	38	90	128
251 - 300	7	28	80	9	10	96	32	83	115
301 - 350	9	25	57	11	10	70	27	64	91
351 - 400	18	26	55	12	5	82	46	53	99
401 - 450	12	24	21	3	15	39	26	31	57
451 - 500	11	19	18	2	4	42	21	27	48
501 - 550	10	23	8	1	8	32	20	21	41
551 - 600	13	25	5	2	9	32	23	20	43
601 - 650	16	17	6	0	10	29	22	17	39
651 - 700	10	19	3	3	4	25	15	17	32
701 - 750	4	15	1	0	8	12	9	11	20
751 - 800	10	15	1	2	7	17	13	13	26
801 - 850	11	17	1	2	3	24	16	13	29
851 - 900	14	12	0	3	5	18	12	14	26
901 - 950	7	8	0	1	3	11	6	9	15
951 - 1000	3	10	0	1	4	8	2	11	13
1001 - 1050	4	11	0	1	3	11	4	11	15
1051 - 1100	7	7	0	1	4	9	7	7	14
1101 - 1150	3	7	1	2	2	7	3	8	11
1151 - 1200	2	10	0	2	3	7	2	10	12
1201 - 1250	1	8	0	2	0	7	6	3	9
1251 - 1300	1	4	0	0	0	5	1	4	5
1301 - 1350	2	4	0	2	0	4	3	3	6
1351 - 1400	0	0	0	0	0	0	0	0	0
1401 - 1450	0	1	0	0	0	1	0	1	1
1451 - 1500	0	2	0	1	0	1	1	1	2
1501 - 1550	0	3	0	1	0	2	1	2	3
1551 - 1600	0	3	0	0	0	3	1	2	3
1601 - 1650	0	1	0	0	0	1	0	1	1
1651 - 1700	0	3	0	1	0	2	0	3	3
1701+	0	6	0	0	0	6	3	3	6
Total	252	493	643	110	160	1,118	441	947	1,388
Average size	492	546	235	434	494	374	478	352	392

Table 17. Boarders as a percentage of all pupils

This table shows all ISC schools grouped by type and percentage of boarders.

% boarders	Senior	Mixed-age	Junior	Single-sex: boys'	Single-sex: girls'	Co-ed	Schools with boarders	Day schools	Total
0	96	327	524	72	115	760	0	947	947
1 - 4	5	16	15	4	3	29	36	0	36
5 - 9	6	32	31	5	5	59	69	0	69
10 - 14	6	33	21	5	5	50	60	0	60
15 - 19	7	21	11	2	5	32	39	0	39
20 - 24	11	14	11	1	2	33	36	0	36
25 - 29	4	11	6	0	3	18	21	0	21
30 - 34	5	7	5	0	3	14	17	0	17
35 - 39	12	7	2	1	2	18	21	0	21
40 - 44	7	5	2	1	3	10	14	0	14
45 - 49	7	2	3	2	2	8	12	0	12
50 - 54	9	4	3	1	1	14	16	0	16
55 - 59	7	2	2	3	0	8	11	0	11
60 - 64	6	2	2	1	1	8	10	0	10
65 - 69	5	4	0	1	0	8	9	0	9
70 - 74	9	3	1	1	2	10	13	0	13
75 - 79	12	0	0	0	1	11	12	0	12
80 - 84	10	0	1	1	1	9	11	0	11
85 - 89	4	1	0	0	1	4	5	0	5
90 - 94	10	0	0	1	4	5	10	0	10
95 - 99	9	1	0	2	0	8	10	0	10
100	5	1	3	6	1	2	9	0	9
Total	252	493	643	110	160	1,118	441	947	1,388
% boarders	33.7%	6.5%	3.8%	13.8%	9.5%	12.3%	30.9%	0.0%	12.0%

Table 18. Boys as a percentage of all pupils

This table shows all ISC schools grouped by type and percentage of boys.

% boys	Senior	Mixed-age	Junior	Single-sex: boys'	Single-sex: girls'	Co-ed	Schools with boarders	Day schools	Total
0	45	68	23	0	136	0	40	96	136
1 - 4	0	18	6	0	14	10	7	17	24
5 - 9	0	2	9	0	8	3	1	10	11
10 - 14	0	6	1	0	0	7	3	4	7
15 - 19	1	3	1	0	2	3	3	2	5
20 - 24	1	4	5	0	0	10	3	7	10
25 - 29	1	3	1	0	0	5	0	5	5
30 - 34	3	2	6	0	0	11	2	9	11
35 - 39	7	10	7	0	0	24	8	16	24
40 - 44	5	9	32	0	0	46	6	40	46
45 - 49	15	50	103	0	0	168	31	137	168
50 - 54	42	124	177	0	0	343	121	222	343
55 - 59	55	91	132	0	0	278	110	168	278
60 - 64	22	41	47	0	0	110	39	71	110
65 - 69	10	13	12	0	0	35	12	23	35
70 - 74	6	12	3	0	0	21	7	14	21
75 - 79	3	4	2	0	0	9	2	7	9
80 - 84	2	1	2	0	0	5	2	3	5
85 - 89	5	2	3	0	0	10	4	6	10
90 - 94	2	8	6	3	0	13	0	16	16
95 - 99	3	4	9	9	0	7	5	11	16
100	24	18	56	98	0	0	35	63	98
Total	252	493	643	110	160	1,118	441	947	1,388
% boys	53.7%	46.3%	56.1%	99.7%	0.3%	54.6%	53.3%	49.0%	50.7%

Table 19. Teacher numbers¹

This table shows the number of teachers in all ISC schools by type of school.

Full-time	Senior	Mixed-age	Junior	Single-sex: boys'	Single-sex: girls'	Co-ed	Schools with boarders	Day schools	Total
Men	6,993	9,106	3,514	2,747	1,684	15,182	10,254	9,359	19,613
Women	6,183	13,679	8,217	1,796	4,892	21,391	11,242	16,837	28,079
Total	13,176	22,785	11,731	4,543	6,576	36,573	21,496	26,196	47,692
Part-time									
Men	1,212	1,443	577	354	416	2,462	1,525	1,707	3,232
Women	3,294	7,140	3,635	671	3,121	10,277	5,329	8,740	14,069
Total	4,506	8,583	4,212	1,025	3,537	12,739	6,854	10,447	17,301
Part-time hours									
Men	19,738	26,481	9,863	6,350	7,568	42,164	25,921	30,161	56,081
Women	60,170	142,242	71,333	14,098	59,543	200,104	101,236	172,508	273,744
Total	79,908	168,723	81,196	20,448	67,110	242,268	127,157	202,669	329,826
Overall full-time equivalent (32.5 hours = 1 full-time)									
Men	7,600	9,921	3,817	2,942	1,917	16,479	11,052	10,287	21,339
Women	8,034	18,056	10,412	2,230	6,724	27,548	14,357	22,145	36,502
Total	15,635	27,976	14,229	5,172	8,641	44,027	25,409	32,432	57,840

¹ Excludes nursery staff.

Table 20. Teaching assistant numbers¹

This table shows the number of teaching assistants in all ISC schools by type of school.

Full-time	Senior	Mixed-age	Junior	Single-sex: boys'	Single-sex: girls'	Co-ed	Schools with boarders	Day schools	Total
Men	126	345	413	101	37	746	274	610	884
Women	293	2,209	3,270	368	598	4,806	1,481	4,291	5,772
Total	419	2,554	3,683	469	635	5,552	1,755	4,901	6,656
Part-time									
Men	63	136	104	37	23	243	123	180	303
Women	371	2,056	2,411	275	627	3,936	1,481	3,357	4,838
Total	434	2,192	2,515	312	650	4,179	1,604	3,537	5,141
Part-time hours									
Men	884	2,539	1,848	629	403	4,239	2,053	3,218	5,271
Women	6,423	42,464	50,662	5,954	12,594	81,000	29,471	70,077	99,548
Total	7,307	45,003	52,509	6,583	12,997	85,239	31,524	73,295	104,819
Overall full-time equivalent (32.5 hours = 1 full-time)									
Men	153	423	470	120	49	876	337	709	1,046
Women	491	3,516	4,829	551	986	7,298	2,388	6,447	8,835
Total	644	3,939	5,299	672	1,035	8,175	2,725	7,156	9,881

¹ Excludes nursery staff.

Table 21. Pupil-teacher ratios

This table shows the pupil and teacher gender ratios, along with the overall pupil-teacher ratio in ISC schools.

Pupils	Senior	Mixed-age	Junior	Single-sex: boys'	Single-sex: girls'	Co-ed	Schools with boarders	Day schools	Total
Boys	66,594	124,705	84,623	47,587	210	228,125	112,447	163,475	275,922
Girls	57,511	144,655	66,228	129	78,806	189,459	98,477	169,917	268,394
Total	124,105	269,360	150,851	47,716	79,016	417,584	210,924	333,392	544,316
Gender ratios									
Boys:girls (pupils)	1.2:1	0.9:1	1.3:1	368.9:1	0:1	1.2:1	1.1:1	1:1	1:1
Men:women (teachers) ¹	0.9:1	0.5:1	0.4:1	1.3:1	0.3:1	0.6:1	0.8:1	0.5:1	0.6:1
Men:women (teaching assistants) ¹	0.4:1	0.1:1	0.1:1	0.2:1	0:1	0.1:1	0.2:1	0.1:1	0.1:1
Pupil-teacher ratio²	7.9:1	9.3:1	9.3:1	9.1:1	9:1	8.9:1	8:1	9.6:1	8.9:1

¹ Excludes nursery staff.

² Pupil-teacher ratios exclude nursery teachers and nursery pupils.

Table 22. Changes to full-time teachers

This table shows the number of full-time teachers coming into ISC schools (broken down by previous occupation) and leaving ISC schools (broken down by destination).

Arriving from	Senior	Mixed-age	Junior	Single-sex: boys'	Single-sex: girls'	Co-ed	Schools with boarders	Day schools	Total
Independent schools	577	929	666	197	324	1,651	1,004	1,168	2,172
State-funded schools	458	1,055	459	118	277	1,577	768	1,204	1,972
ITT at university or training college	135	224	65	39	72	313	175	249	424
New graduates	141	184	77	35	61	306	200	202	402
Industry	74	94	38	16	18	172	105	101	206
Outside the UK	142	218	115	50	54	371	235	240	475
Retirement	13	17	7	4	4	29	21	16	37
Maternity leave	110	269	115	29	129	336	161	333	494
Part-time	164	376	174	37	160	517	269	445	714
Other	202	388	198	49	122	617	348	440	788
Total	2,016	3,754	1,914	574	1,221	5,889	3,286	4,398	7,684
Going to									
Independent schools	452	607	422	157	269	1,055	668	813	1,481
State-funded schools	159	376	165	32	113	555	290	410	700
Industry	69	111	57	14	30	193	103	134	237
Outside the UK	106	150	108	30	46	288	159	205	364
Retirement	234	471	259	99	166	699	418	546	964
Maternity leave	162	429	240	52	178	601	270	561	831
Part-time	191	384	220	44	142	609	292	503	795
Other	495	838	339	140	278	1,254	823	849	1,672
Total	1,868	3,366	1,810	568	1,222	5,254	3,023	4,021	7,044
Net gain									
Independent schools	125	322	244	40	55	596	336	355	691
State-funded schools	299	679	294	86	164	1,022	478	794	1,272
Industry	5	-17	-19	2	-12	-21	2	-33	-31
Outside the UK	36	68	7	20	8	83	76	35	111
Retirement	-221	-454	-252	-95	-162	-670	-397	-530	-927
Maternity leave	-52	-160	-125	-23	-49	-265	-109	-228	-337
Part-time	-27	-8	-46	-7	18	-92	-23	-58	-81
Other	-293	-450	-141	-91	-156	-637	-475	-409	-884
Total	148	388	104	6	-1	635	263	377	640
Full-time teachers									
Turnover as % of full-time teachers	14.2	14.8	15.4	12.5	18.6	14.4	14.1	15.3	14.8
Gain as % of full-time teachers	1.1	1.7	0.9	0.1	0.0	1.7	1.2	1.4	1.3
Total	13,176	22,785	11,731	4,543	6,576	36,573	21,496	26,196	47,692

Table 23. SEND pupils¹

This table shows the number of pupils who have been identified with SEND.

Types of SEND	Senior	Mixed-age	Junior	Single-sex: boys'	Single-sex: girls'	Co-ed	Schools with boarders	Day schools	Total
Specific learning difficulty (SpLD)	16,472	27,675	9,376	3,762	7,384	42,377	26,174	27,349	53,523
Moderate learning difficulty (MLD)	880	1,263	1,196	281	290	2,768	1,276	2,063	3,339
Severe learning difficulty (SLD)	30	58	74	22	6	134	67	95	162
Profound and multiple learning difficulty (PMLD)	46	24	19	3	18	68	32	57	89
Social, emotional and mental health (SEMH)	3,921	8,665	2,493	1,057	2,139	11,883	6,185	8,894	15,079
Speech, language and communication needs (SLCN)	790	3,463	3,311	593	532	6,439	2,397	5,167	7,564
Hearing impairment (HI)	442	1,039	415	165	293	1,438	706	1,190	1,896
Visual impairment (VI)	502	1,069	349	266	211	1,443	732	1,188	1,920
Multi-Sensory impairment (MSI)	149	266	170	35	26	524	237	348	585
Physical difficulty (PD)	710	1,453	419	396	330	1,856	949	1,633	2,582
Autistic spectrum disorder (ASD)	1,855	4,847	1,427	714	773	6,642	2,924	5,205	8,129
Other difficulty/disability	1,505	2,810	1,117	563	707	4,162	2,400	3,032	5,432
SEN support but no specialist assessment of type of need	2,299	5,815	5,486	1,472	1,475	10,653	5,158	8,442	13,600
Total	25,151	48,909	21,931	8,056	12,285	75,650	41,985	54,006	95,991
% pupils with SEND	20.3%	18.2%	14.5%	16.9%	15.5%	18.1%	19.9%	16.2%	17.6%

¹ Some pupils have more than one SEND; they are counted under each individual category of SEND, but are counted only once in the total.

Appendix Two Comparative Tables

Tables in Appendix Two show comparative figures for the 1,351 schools that participated in the census in both 2021 and 2022. In each table the 2022 figures are printed in bold and the 2021 figures are printed in italics. Figures highlighted in yellow show the percentage change between the two years. Where schools are categorised by age, gender and by day and boarding, the categorisation is based on the school as it is in 2022; in a small number of cases this will differ from how the school would have been categorised in 2021.

Table 1a. Changes to pupil numbers by association

This table shows total school and pupil numbers for schools that participated in the census in both 2021 and 2022, including a breakdown by ISC association. Where schools are in more than one association, the figures are included in all associations of which the school is in membership.

	GSA	HMC ¹	IAPS	ISA	SofH	Total
Number of schools	140	351	595	529	120	1,351
Pupils						
Boarders (by registration)	8,047	48,245	19,346	9,218	7,654	69,526
	<i>7,607</i>	<i>46,032</i>	<i>17,294</i>	<i>7,999</i>	<i>7,007</i>	<i>64,705</i>
	5.8%	4.8%	11.9%	15.2%	9.2%	7.5%
Day pupils (by registration)	73,530	223,115	232,169	108,005	46,500	469,364
	<i>72,491</i>	<i>219,793</i>	<i>229,757</i>	<i>106,323</i>	<i>45,523</i>	<i>463,689</i>
	1.4%	1.5%	1.1%	1.6%	2.1%	1.2%
Boys	3,369	148,160	130,153	58,873	30,420	273,060
	<i>3,193</i>	<i>145,781</i>	<i>128,270</i>	<i>57,191</i>	<i>29,663</i>	<i>268,353</i>
	5.5%	1.6%	1.5%	2.9%	2.6%	1.8%
Girls	78,208	123,200	121,362	58,350	23,734	265,830
	<i>76,905</i>	<i>120,044</i>	<i>118,781</i>	<i>57,131</i>	<i>22,867</i>	<i>260,041</i>
	1.7%	2.6%	2.2%	2.1%	3.8%	2.2%
Total	81,577	271,360	251,515	117,223	54,154	538,890
	<i>80,098</i>	<i>265,825</i>	<i>247,051</i>	<i>114,322</i>	<i>52,530</i>	<i>528,394</i>
	1.8%	2.1%	2.5%	3.1%	2.1%	2.0%

¹ HMC schools and pupil numbers include schools within a foundation with a HMC member as Executive Head or Principal.

Table 1b. Changes to pupil numbers by category of school

This table shows total school and pupil numbers for schools that participated in the census in both 2021 and 2022, including a breakdown by category of school. The girls at "single-sex: boys" schools and the boys at "single-sex: girls" schools are all in the nursery.

Schools	Senior	Mixed-age	Junior	Single-sex: boys'	Single-sex: girls'	Co-ed	Schools with boarders	Day schools	Total
Number of schools	240	479	632	105	156	1,090	436	915	1,351
Pupils									
Boarders (by registration)	42,823	18,329	8,374	6,675	7,766	55,085	69,526	0	69,526
	<i>40,740</i>	<i>16,922</i>	<i>7,043</i>	<i>6,472</i>	<i>7,419</i>	<i>50,814</i>	<i>64,653</i>	<i>52</i>	<i>64,705</i>
	5.1%	8.3%	18.9%	3.1%	4.7%	8.4%	7.5%	-100.0%	7.5%
Day pupils (by registration)	80,267	248,133	140,964	39,745	70,253	359,366	144,699	324,665	469,364
	<i>79,971</i>	<i>242,410</i>	<i>141,308</i>	<i>40,056</i>	<i>69,701</i>	<i>353,932</i>	<i>143,976</i>	<i>319,713</i>	<i>463,689</i>
	0.4%	2.4%	-0.2%	-0.8%	0.8%	1.5%	0.5%	1.5%	1.2%
Boys	65,975	123,248	83,837	46,291	210	226,559	114,223	158,837	273,060
	<i>64,920</i>	<i>120,096</i>	<i>83,337</i>	<i>46,372</i>	<i>242</i>	<i>221,739</i>	<i>111,713</i>	<i>156,640</i>	<i>268,353</i>
	1.6%	2.6%	0.6%	-0.2%	-13.2%	2.2%	2.2%	1.4%	1.8%
Girls	57,115	143,214	65,501	129	77,809	187,892	100,002	165,828	265,830
	<i>55,791</i>	<i>139,236</i>	<i>65,014</i>	<i>156</i>	<i>76,878</i>	<i>183,007</i>	<i>96,916</i>	<i>163,125</i>	<i>260,041</i>
	2.4%	2.9%	0.7%	-17.3%	1.2%	2.7%	3.2%	1.7%	2.2%
Total	123,090	266,462	149,338	46,420	78,019	414,451	214,225	324,665	538,890
	<i>120,711</i>	<i>259,332</i>	<i>148,351</i>	<i>46,528</i>	<i>77,120</i>	<i>404,746</i>	<i>208,629</i>	<i>319,765</i>	<i>528,394</i>
	2.0%	2.7%	0.7%	-0.2%	1.2%	2.4%	2.7%	1.5%	2.0%

Table 2. Changes to pupil numbers by age

This table shows the number of pupils in ISC schools that participated in the census in both 2021 and 2022 by age and gender.

Age	Boys	Girls	Total
0-2	5,924	5,798	11,722
	5,213	4,991	10,204
	13.6%	16.2%	14.9%
3	8,044	7,754	15,798
	7,744	7,775	15,519
	3.9%	-0.3%	1.8%
4	10,190	10,180	20,370
	10,194	10,002	20,196
	0.0%	1.8%	0.9%
5	10,958	10,663	21,621
	10,547	10,856	21,403
	3.9%	-1.8%	1.0%
6	11,359	11,539	22,898
	11,437	11,145	22,582
	-0.7%	3.5%	1.4%
7	13,179	12,623	25,802
	13,161	12,779	25,940
	0.1%	-1.2%	-0.5%
8	14,438	13,828	28,266
	14,602	14,080	28,682
	-1.1%	-1.8%	-1.5%
9	16,057	15,446	31,503
	16,225	15,523	31,748
	-1.0%	-0.5%	-0.8%
10	17,583	16,771	34,354
	17,433	16,586	34,019
	0.9%	1.1%	1.0%
11	22,224	21,853	44,077
	21,655	20,969	42,624
	2.6%	4.2%	3.4%
12	22,638	22,104	44,742
	23,083	22,359	45,442
	-1.9%	-1.1%	-1.5%
13	24,695	23,979	48,674
	24,058	23,132	47,190
	2.6%	3.7%	3.1%
14	25,263	24,436	49,699
	23,920	23,413	47,333
	5.6%	4.4%	5.0%
15	24,835	24,519	49,354
	24,377	23,450	47,827
	1.9%	4.6%	3.2%
16	22,226	21,768	43,994
	21,786	20,832	42,618
	2.0%	4.5%	3.2%
17	21,137	20,275	41,412
	20,354	19,710	40,064
	3.8%	2.9%	3.4%
18	2,036	1,943	3,979
	2,219	2,064	4,283
	-8.2%	-5.9%	-7.1%
19	274	351	625
	345	375	720
	-20.6%	-6.4%	-13.2%
Total	273,060	265,830	538,890
	268,353	260,041	528,394
	1.8%	2.2%	2.0%

Table 3. Changes to pupil numbers by year group

This table shows the number of pupils in ISC schools that participated in the census in both 2021 and 2022 by year group and gender.

Year group	Boys	Girls	Total
Nursery	14,036	13,585	27,621
	13,059	12,762	25,821
	7.5%	6.4%	7.0%
Reception	10,281	10,123	20,404
	10,173	10,005	20,178
	1.1%	1.2%	1.1%
Year 1	11,016	10,780	21,796
	10,586	10,851	21,437
	4.1%	-0.7%	1.7%
Year 2	11,371	11,521	22,892
	11,429	11,134	22,563
	-0.5%	3.5%	1.5%
Year 3	13,210	12,625	25,835
	13,195	12,806	26,001
	0.1%	-1.4%	-0.6%
Year 4	14,420	13,863	28,283
	14,598	14,052	28,650
	-1.2%	-1.3%	-1.3%
Year 5	16,072	15,400	31,472
	16,226	15,489	31,715
	-0.9%	-0.6%	-0.8%
Year 6	17,548	16,754	34,302
	17,344	16,535	33,879
	1.2%	1.3%	1.2%
Year 7	22,304	21,943	44,247
	21,836	21,021	42,857
	2.1%	4.4%	3.2%
Year 8	22,820	22,075	44,895
	23,099	22,387	45,486
	-1.2%	-1.4%	-1.3%
Year 9	24,871	24,209	49,080
	24,320	23,229	47,549
	2.3%	4.2%	3.2%
Year 10	25,728	24,871	50,599
	24,318	23,755	48,073
	5.8%	4.7%	5.3%
Year 11	24,823	24,291	49,114
	24,351	23,439	47,790
	1.9%	3.6%	2.8%
Year 12	22,702	22,564	45,266
	22,338	21,522	43,860
	1.6%	4.8%	3.2%
Year 13	21,858	21,226	43,084
	21,481	21,054	42,535
	1.8%	0.8%	1.3%
Total	273,060	265,830	538,890
	268,353	260,041	528,394
	1.8%	2.2%	2.0%

Table 4. Changes to new pupil numbers by year group

This table shows numbers of new pupils in ISC schools that participated in the census in both 2021 and 2022 by year group, gender and day/boarding.

Year group	Boys	Girls	Total
Nursery	7,340	7,231	14,571
	7,327	7,048	14,375
	0.2%	2.6%	1.4%
Reception	4,740	4,657	9,397
	4,585	4,523	9,108
	3.4%	3.0%	3.2%
Year 1	1,560	1,328	2,888
	1,425	1,243	2,668
	9.5%	6.8%	8.2%
Year 2	1,327	1,291	2,618
	1,327	1,211	2,538
	0.0%	6.6%	3.2%
Year 3	3,191	2,621	5,812
	3,198	2,655	5,853
	-0.2%	-1.3%	-0.7%
Year 4	2,086	1,754	3,840
	2,136	1,775	3,911
	-2.3%	-1.2%	-1.8%
Year 5	2,124	2,101	4,225
	2,143	1,979	4,122
	-0.9%	6.2%	2.5%
Year 6	1,882	1,789	3,671
	1,905	1,807	3,712
	-1.2%	-1.0%	-1.1%
Year 7	11,938	12,950	24,888
	11,388	12,263	23,651
	4.8%	5.6%	5.2%
Year 8	1,935	1,895	3,830
	1,705	1,814	3,519
	13.5%	4.5%	8.8%
Year 9	7,907	5,137	13,044
	7,795	4,854	12,649
	1.4%	5.8%	3.1%
Year 10	2,252	2,621	4,873
	1,902	2,188	4,090
	18.4%	19.8%	19.1%
Year 11	1,125	1,206	2,331
	861	950	1,811
	30.7%	26.9%	28.7%
Year 12	4,631	6,889	11,520
	4,383	6,319	10,702
	5.7%	9.0%	7.6%
Year 13	507	557	1,064
	555	633	1,188
	-8.6%	-12.0%	-10.4%
Total	54,545	54,027	108,572
	52,635	51,262	103,897
	3.6%	5.4%	4.5%

Table 5. Changes to pupil numbers by region

For ISC schools that participated in the census in both 2021 and 2022, this table shows the number of pupils by region. Please see Appendix Three, Figure 1 for definitions of regions.

Region ¹	No. of schools	Boarders	Day pupils	Boys	Girls	Total pupils
London	298	2,419	106,918	53,803	55,534	109,337
	298	2,240	106,196	53,610	54,826	108,436
		8.0%	0.7%	0.4%	1.3%	0.8%
South Central	219	19,732	59,351	39,754	39,329	79,083
	219	18,687	58,582	38,958	38,311	77,269
		5.6%	1.3%	2.0%	2.7%	2.3%
South East	196	13,213	64,630	40,117	37,726	77,843
	196	12,022	64,169	39,276	36,915	76,191
		9.9%	0.7%	2.1%	2.2%	2.2%
East	151	6,870	56,821	32,894	30,797	63,691
	151	6,000	56,341	32,214	30,127	62,341
		14.5%	0.9%	2.1%	2.2%	2.2%
South West	92	8,616	27,587	18,319	17,884	36,203
	92	8,117	26,826	17,828	17,115	34,943
		6.1%	2.8%	2.8%	4.5%	3.6%
West Midlands	95	4,859	31,021	18,241	17,639	35,880
	95	4,683	30,392	17,961	17,114	35,075
		3.8%	2.1%	1.6%	3.1%	2.3%
North West	90	2,247	33,954	18,723	17,478	36,201
	90	1,821	33,320	18,162	16,979	35,141
		23.4%	1.9%	3.1%	2.9%	3.0%
East Midlands	67	4,117	20,167	12,485	11,799	24,284
	67	3,883	19,895	12,233	11,545	23,778
		6.0%	1.4%	2.1%	2.2%	2.1%
Yorkshire and Humber	55	3,059	20,481	11,527	12,013	23,540
	55	3,016	20,131	11,264	11,883	23,147
		1.4%	1.7%	2.3%	1.1%	1.7%
Scotland	34	2,379	23,072	12,783	12,668	25,451
	34	2,271	22,952	12,701	12,522	25,223
		4.8%	0.5%	0.6%	1.2%	0.9%
Wales	18	1,263	6,124	3,689	3,698	7,387
	18	1,260	5,912	3,600	3,572	7,172
		0.2%	3.6%	2.5%	3.5%	3.0%
North East	16	334	6,957	3,543	3,748	7,291
	16	318	6,792	3,454	3,656	7,110
		5.0%	2.4%	2.6%	2.5%	2.5%
All²	1,351	69,526	469,364	273,060	265,830	538,890
	1,351	64,705	463,689	268,353	260,041	528,394
		7.5%	1.2%	1.8%	2.2%	2.0%

¹ Northern Ireland, the Channel Islands and the Isle of Man are not listed due to the small number of schools in these regions.

² The total includes data for schools in Northern Ireland, the Channel Islands and the Isle of Man.

Table 6. Changes to fees by region¹

Looking at ISC schools that participated in the census in both 2021 and 2022, this table shows the average termly fees by region. Please see Appendix Three, Figure 1 for definitions of regions.

Region ²	Boarding fee	Day fee (boarding schools)	Day fee (day schools)
London	£14,227	£7,331	£6,246
	£13,883	£7,277	£6,040
	2.5%	0.7%	3.4%
South Central	£12,900	£7,597	£5,279
	£12,495	£7,411	£5,130
	3.2%	2.5%	2.9%
South East	£12,749	£6,125	£5,688
	£12,392	£5,930	£5,523
	2.9%	3.3%	3.0%
East	£12,162	£6,214	£5,423
	£11,820	£6,105	£5,289
	2.9%	1.8%	2.5%
West Midlands	£12,529	£7,267	£3,807
	£12,129	£7,147	£3,703
	3.3%	1.7%	2.8%
South West	£12,103	£5,252	£4,412
	£11,852	£5,133	£4,238
	2.1%	2.3%	4.1%
North West	£10,806	£5,228	£4,576
	£10,389	£5,266	£4,436
	4.0%	-0.7%	3.2%
East Midlands	£12,331	£7,979	£4,598
	£11,962	£7,810	£4,451
	3.1%	2.2%	3.3%
Yorkshire and Humber	£9,795	£6,935	£4,244
	£9,411	£6,814	£4,109
	4.1%	1.8%	3.3%
Scotland	£12,065	£7,048	£4,381
	£11,817	£7,506	£4,248
	2.1%	-6.1%	3.1%
Wales	£12,340	£5,067	£4,395
	£11,812	£4,932	£4,274
	4.5%	2.7%	2.8%
North East	£9,299	£4,757	£4,310
	£9,468	£4,634	£4,199
	-1.8%	2.7%	2.7%
All³	£12,401	£6,845	£5,143
	£12,047	£6,714	£4,990
	2.9%	2.0%	3.1%

¹ Due to the impact of the pandemic on boarding, average fees were calculated by assuming that all full and weekly boarders would have boarded on the day of the census and paid boarding fees, as well as a proportion of flexi-boarders that accounted for the remaining pupils boarding on previous census days. This methodology has been applied to both 2021 and 2022 above but differs to that used in previous years.

² Northern Ireland, the Channel Islands and the Isle of Man are not listed due to the small number of schools in these regions.

³ The total includes data for schools in Northern Ireland, the Channel Islands and the Isle of Man.

Table 7. Changes to fees by school type and age group¹

For ISC schools that participated in the census in both 2021 and 2022, this table shows average termly fees for different age groups.

Age group	Boarding fee	Day fee (boarding schools)	Day fee (day schools)
Sixth form	£13,049	£7,693	£5,638
	£12,662	£7,546	£5,495
	3.1%	2.0%	2.6%
Senior	£12,146	£7,239	£5,514
	£11,811	£7,056	£5,336
	2.8%	2.6%	3.3%
Junior	£8,957	£5,542	£4,832
	£8,709	£5,369	£4,697
	2.9%	3.2%	2.9%
Nursery		£3,334	£3,835
		£3,124	£3,689
		6.7%	3.9%
Overall	£12,401	£6,845	£5,143
	£12,047	£6,714	£4,990
	2.9%	2.0%	3.1%

¹ Due to the impact of the pandemic on boarding, average fees were calculated by assuming that all full and weekly boarders would have boarded on the day of the census and paid boarding fees, as well as a proportion of flexi-boarders that accounted for the remaining pupils boarding on previous census days. This methodology has been applied to both 2021 and 2022 above but differs to that used in previous years.

Table 8a. Changes to contributions to fees: senior, mixed-age and junior schools (termly values)

For ISC schools that participated in the census in both 2021 and 2022, this table shows the breakdown of contributions to fees by type of contribution.

	Senior (pupils)	Senior (value £m)	Mixed-age (pupils)	Mixed-age (value £m)	Junior (pupils)	Junior (value £m)	Total (pupils)	Total (value £m)	% of all pupils
The school									
	43,668	128.6	81,333	150.1	31,763	41.0	156,764	319.7	29.1
	42,585	117.9	81,003	151.9	32,505	40.8	156,093	310.7	29.5
	2.5%	9.1%	0.4%	-1.2%	-2.3%	0.4%	0.4%	2.9%	-1.5%
The school: means-tested bursaries									
	12,839	63.0	20,949	67.6	6,013	13.7	39,801	144.2	7.4
	13,062	60.4	22,175	68.2	6,653	14.6	41,890	143.2	7.9
	-1.7%	4.3%	-5.5%	-0.9%	-9.6%	-6.6%	-5.0%	0.7%	-6.8%
The school: eligible families¹									
	13,343	29.7	38,235	46.2	24,632	24.0	76,210	100.0	14.1
	11,819	25.7	37,813	47.5	24,539	22.4	74,171	95.7	14.0
	12.9%	15.3%	1.1%	-2.6%	0.4%	7.1%	2.7%	4.5%	0.7%
The school: scholarships: non-means-tested									
	23,315	29.5	32,143	33.5	2,841	2.6	58,299	65.6	10.8
	23,898	27.7	31,943	33.8	2,958	2.8	58,799	64.3	11.1
	-2.4%	6.6%	0.6%	-0.7%	-4.0%	-8.8%	-0.9%	2.1%	-2.8%
The school: scholarships: means-tested									
	1,188	6.4	1,880	2.7	159	0.3	3,227	9.4	0.6
	897	4.0	1,372	2.5	250	0.5	2,519	7.1	0.5
	32.4%	58.4%	37.0%	8.6%	-36.4%	-40.7%	28.1%	33.5%	25.6%
The school: itrust²									
	0	0.00	4	0.00	59	0.41	63	0.41	0.01
	0	0.00	33	0.06	53	0.39	86	0.45	0.02
			-87.9%	-91.3%	11.3%	4.1%	-26.7%	-7.8%	-28.2%
Early Years Funding									
	0	0.0	6,414	6.5	15,198	13.4	21,612	19.9	4.0
	24	0.0	6,660	6.4	15,397	13.1	22,081	19.5	4.2
	-100.0%	-100.0%	-3.7%	2.4%	-1.3%	2.6%	-2.1%	2.4%	-4.0%
Local Education Authorities³									
	631	5.3	3,131	26.2	218	0.7	3,980	32.2	0.8
	562	4.8	2,802	18.8	179	0.6	3,543	24.2	0.7
	12.3%	10.0%	11.7%	39.1%	21.8%	18.4%	12.3%	32.8%	10.1%
Government Music and Dance Scheme									
	808	6.1	697	5.6	65	0.3	1,570	12.0	0.3
	807	6.2	673	5.1	61	0.3	1,541	11.6	0.3
	0.1%	-1.7%	3.6%	9.4%	6.6%	-5.8%	1.9%	3.1%	-0.1%
All other sources									
	771	2.6	813	2.0	388	1.1	1,972	5.7	0.4
	825	3.0	1,022	2.7	370	1.1	2,217	6.7	0.4
	-6.5%	-13.5%	-20.5%	-25.7%	4.9%	0.3%	-11.1%	-16.0%	-12.8%
Total									
	44,578	142.5	89,634	190.4	44,681	56.5	178,893	389.4	34.0
	43,541	131.8	89,340	184.9	45,683	55.9	178,564	372.7	34.6
	2.4%	8.1%	0.3%	2.9%	-2.2%	1.1%	0.2%	4.5%	-1.8%
Number of pupils as a % of all pupils									
	37.3		34.7		30.1		34.0		
	37.1		35.6		30.9		34.6		
	0.4%		-2.4%		-2.8%		-1.8%		

¹ Includes HM Forces discounts, staff discounts, sibling discounts and clergy discounts.

² itrust is an IAPS charity supporting low-income families and families with short-term financial difficulties.

³ Excludes data for schools in Northern Ireland, the Channel Islands and the Isle of Man.

Table 8b. Changes to contributions to fees: single-sex and co-educational schools (termly values)

For ISC schools that participated in the census in both 2021 and 2022, this table shows the breakdown of contributions to fees by type of contribution.

	Single-sex: boys' (pupils)	Single-sex: boys' (value £m)	Single-sex: girls' (pupils)	Single-sex: girls' (value £m)	Co-ed (pupils)	Co-ed (value £m)	Total (pupils)	Total (value £m)	% of all pupils
The school									
	8,448	26.0	19,676	41.3	128,640	252.3	156,764	319.7	29.1
	8,447	24.5	19,681	40.7	127,965	245.5	156,093	310.7	29.5
	0.0%	6.3%	0.0%	1.6%	0.5%	2.8%	0.4%	2.9%	-1.5%
The school: means-tested bursaries									
	2,986	15.3	5,697	23.9	31,118	105.0	39,801	144.2	7.4
	3,023	14.9	6,192	24.4	32,675	103.9	41,890	143.2	7.9
	-1.2%	2.7%	-8.0%	-1.9%	-4.8%	1.0%	-5.0%	0.7%	-6.8%
The school: eligible families¹									
	2,552	5.5	6,460	7.9	67,198	86.6	76,210	100.0	14.1
	2,249	4.0	6,146	7.0	65,776	84.8	74,171	95.7	14.0
	13.5%	38.4%	5.1%	13.3%	2.2%	2.2%	2.7%	4.5%	0.7%
The school: scholarships: non-means-tested									
	3,641	3.9	10,072	8.9	44,586	52.8	58,299	65.6	10.8
	3,763	3.9	10,035	8.7	45,001	51.6	58,799	64.3	11.1
	-3.2%	0.1%	0.4%	2.3%	-0.9%	2.2%	-0.9%	2.1%	-2.8%
The school: scholarships: means-tested									
	165	0.9	159	0.6	2,903	7.9	3,227	9.4	0.6
	154	1.3	196	0.7	2,169	5.1	2,519	7.1	0.5
	7.1%	-30.7%	-18.9%	-5.5%	33.8%	55.6%	28.1%	33.5%	25.6%
The school: itrust²									
	30	0.36	2	0.00	31	0.05	63	0.41	0.01
	29	0.35	1	0.00	56	0.10	86	0.45	0.02
	3.4%	2.9%	100.0%	87.3%	-44.6%	-50.0%	-26.7%	-7.8%	-28.2%
Early Years Funding									
	659	0.6	1,163	1.0	19,790	18.3	21,612	19.9	4.0
	709	0.6	1,321	1.2	20,051	17.7	22,081	19.5	4.2
	-7.1%	-2.3%	-12.0%	-15.3%	-1.3%	3.8%	-2.1%	2.4%	-4.0%
Local Education Authorities³									
	397	2.4	74	0.3	3,509	29.5	3,980	32.2	0.8
	394	2.2	39	0.2	3,110	21.9	3,543	24.2	0.7
	0.8%	9.8%	89.7%	77.4%	12.8%	34.7%	12.3%	32.8%	10.1%
Government Music and Dance Scheme									
	10	0.0	1	0.0	1,559	12.0	1,570	12.0	0.3
	0	0.0	2	0.0	1,539	11.6	1,541	11.6	0.3
			-50.0%	-31.7%	1.3%	3.1%	1.9%	3.1%	-0.1%
All other sources									
	158	0.6	220	0.7	1,594	4.4	1,972	5.7	0.4
	158	0.6	315	0.8	1,744	5.3	2,217	6.7	0.4
	0.0%	8.2%	-30.2%	-19.4%	-8.6%	-18.1%	-11.1%	-16.0%	-12.8%
Total									
	9,205	29.6	20,746	43.3	148,942	316.5	178,893	389.4	34.0
	9,222	27.8	20,926	42.9	148,416	302.0	178,564	372.7	34.6
	-0.2%	6.4%	-0.9%	1.0%	0.4%	4.8%	0.2%	4.5%	-1.8%
Number of pupils as a % of all pupils									
	21.4		27.4		36.6		34.0		
	21.4		28.0		37.3		34.6		
	0.1%		-2.1%		-2.0%		-1.8%		

¹ Includes HM Forces discounts, staff discounts, sibling discounts and clergy discounts.

² itrust is an IAPS charity supporting low-income families and families with short-term financial difficulties.

³ Excludes data for schools in Northern Ireland, the Channel Islands and the Isle of Man.

Table 8c. Changes to contributions to fees: day and boarding schools (termly values)

For ISC schools that participated in the census in both 2021 and 2022, this table shows the breakdown of contributions to fees by type of contribution.

	Schools with boarders (pupils)	Schools with boarders (value £m)	Day schools (pupils)	Day schools (value £m)	Total (pupils)	Total (value £m)	% of all pupils
The school							
	79,253	200.4	77,511	119.2	156,764	319.7	29.1
	78,734	192.7	77,359	118.0	156,093	310.7	29.5
	0.7%	4.0%	0.2%	1.1%	0.4%	2.9%	-1.5%
The school: means-tested bursaries							
	20,832	85.2	18,969	59.1	39,801	144.2	7.4
	21,554	83.8	20,336	59.4	41,890	143.2	7.9
	-3.3%	1.7%	-6.7%	-0.6%	-5.0%	0.7%	-6.8%
The school: eligible families¹							
	36,083	63.1	40,127	36.9	76,210	100.0	14.1
	34,832	61.0	39,339	34.7	74,171	95.7	14.0
	3.6%	3.5%	2.0%	6.2%	2.7%	4.5%	0.7%
The school: scholarships: non-means-tested							
	33,940	44.2	24,359	21.4	58,299	65.6	10.8
	34,521	42.3	24,278	21.9	58,799	64.3	11.1
	-1.7%	4.3%	0.3%	-2.2%	-0.9%	2.1%	-2.8%
The school: scholarships: means-tested							
	2,142	7.6	1,085	1.8	3,227	9.4	0.6
	1,507	5.2	1,012	1.9	2,519	7.1	0.5
	42.1%	45.9%	7.2%	-1.3%	28.1%	33.5%	25.6%
The school: itrust²							
	44	0.38	19	0.03	63	0.41	0.01
	69	0.42	17	0.03	86	0.45	0.02
	-36.2%	-8.0%	11.8%	-5.0%	-26.7%	-7.8%	-28.2%
Early Years Funding							
	4,290	3.8	17,322	16.1	21,612	19.9	4.0
	4,315	3.5	17,766	16.0	22,081	19.5	4.2
	-0.6%	8.0%	-2.5%	1.2%	-2.1%	2.4%	-4.0%
Local Education Authorities³							
	1,239	9.0	2,741	23.2	3,980	32.2	0.8
	1,188	8.0	2,355	16.3	3,543	24.2	0.7
	4.3%	12.6%	16.4%	42.7%	12.3%	32.8%	10.1%
Government Music and Dance Scheme							
	1,561	11.9	9	0.0	1,570	12.0	0.3
	1,534	11.6	7	0.0	1,541	11.6	0.3
	1.8%	3.0%	28.6%	108.4%	1.9%	3.1%	-0.1%
All other sources							
	1,055	3.5	917	2.1	1,972	5.7	0.4
	1,221	4.2	996	2.5	2,217	6.7	0.4
	-13.6%	-15.7%	-7.9%	-16.6%	-11.1%	-16.0%	-12.8%
Total							
	84,567	228.7	94,326	160.7	178,893	389.4	34.0
	83,879	220.0	94,685	152.7	178,564	372.7	34.6
	0.8%	3.9%	-0.4%	5.3%	0.2%	4.5%	-1.8%
Number of pupils as a % of all pupils							
	40.5		29.7		34.0		
	41.2		30.3		34.6		
	-1.9%		-1.9%		-1.8%		

¹ Includes HM Forces discounts, staff discounts, sibling discounts and clergy discounts.

² itrust is an IAPS charity supporting low-income families and families with short-term financial difficulties.

³ Excludes data for schools in Northern Ireland, the Channel Islands and the Isle of Man.

Table 9. Changes to non-British pupils whose parents live overseas
For ISC schools that participated in the census in both 2021 and 2022, this table shows the number of non-British pupils whose parents live overseas broken down by country/area of residence.

	Senior	Mixed-age	Junior	Single-sex: boys'	Single-sex: girls'	Co-ed	Schools with boarders	Day schools	Total
France	187	136	53	26	21	329	357	19	376
	172	132	36	24	16	300	320	20	340
	8.7%	3.0%	47.2%	8.3%	31.3%	9.7%	11.6%	-5.0%	10.6%
Germany	946	1,082	12	34	61	1,945	2,032	8	2,040
	785	724	9	27	29	1,462	1,506	12	1,518
	20.5%	49.4%	33.3%	25.9%	110.3%	33.0%	34.9%	-33.3%	34.4%
Russia	849	332	48	49	44	1,136	1,201	28	1,229
	863	350	67	49	57	1,174	1,249	31	1,280
	-1.6%	-5.1%	-28.4%	0.0%	-22.8%	-3.2%	-3.8%	-9.7%	-4.0%
Spain	533	528	297	84	143	1,131	1,325	33	1,358
	304	251	91	50	46	550	618	28	646
	75.3%	110.4%	226.4%	68.0%	210.9%	105.6%	114.4%	17.9%	110.2%
Ireland	25	37	2	8	4	52	63	1	64
	37	45	4	14	3	69	84	2	86
	-32.4%	-17.8%	-50.0%	-42.9%	33.3%	-24.6%	-25.0%	-50.0%	-25.6%
Italy	294	147	8	7	10	432	441	8	449
	309	139	7	7	10	438	452	3	455
	-4.9%	5.8%	14.3%	0.0%	0.0%	-1.4%	-2.4%	166.7%	-1.3%
Poland	65	38	2	2	9	94	104	1	105
	74	51	3	3	11	114	127	1	128
	-12.2%	-25.5%	-33.3%	-33.3%	-18.2%	-17.5%	-18.1%	0.0%	-18.0%
Romania	88	23	2	3	7	103	112	1	113
	72	25	1	3	6	89	95	3	98
	22.2%	-8.0%	100.0%	0.0%	16.7%	15.7%	17.9%	-66.7%	15.3%
Remainder of Europe (EEA)	707	461	40	42	65	1,101	1,179	29	1,208
	781	383	30	56	60	1,078	1,170	24	1,194
	-9.5%	20.4%	33.3%	-25.0%	8.3%	2.1%	0.8%	20.8%	1.2%
Remainder of Europe (non-EEA)	658	308	14	17	36	927	961	19	980
	724	305	18	30	27	990	1,025	22	1,047
	-9.1%	1.0%	-22.2%	-43.3%	33.3%	-6.4%	-6.2%	-13.6%	-6.4%
Nigeria	539	219	49	35	118	654	787	20	807
	562	257	50	32	137	700	853	16	869
	-4.1%	-14.8%	-2.0%	9.4%	-13.9%	-6.6%	-7.7%	25.0%	-7.1%
Rest of Africa	406	231	22	11	53	595	633	26	659
	351	185	22	14	41	503	541	17	558
	15.7%	24.9%	0.0%	-21.4%	29.3%	18.3%	17.0%	52.9%	18.1%
USA	184	146	27	24	40	293	342	15	357
	153	127	30	26	39	245	300	10	310
	20.3%	15.0%	-10.0%	-7.7%	2.6%	19.6%	14.0%	50.0%	15.2%
Rest of North America	64	29	9	10	9	83	98	4	102
	51	14	6	8	4	59	69	2	71
	25.5%	107.1%	50.0%	25.0%	125.0%	40.7%	42.0%	100.0%	43.7%
Central and South America	340	268	9	17	71	529	605	12	617
	120	124	5	18	15	216	244	5	249
	183.3%	116.1%	80.0%	-5.6%	373.3%	144.9%	148.0%	140.0%	147.8%
Middle East	434	156	18	26	33	549	562	46	608
	386	184	7	22	36	519	545	32	577
	12.4%	-15.2%	157.1%	18.2%	-8.3%	5.8%	3.1%	43.8%	5.4%
Hong Kong	3,348	2,301	164	453	1,008	4,352	5,728	85	5,813
	3,043	2,220	150	436	901	4,076	5,339	74	5,413
	10.0%	3.6%	9.3%	3.9%	11.9%	6.8%	7.3%	14.9%	7.4%
Mainland China	2,963	1,666	241	264	694	3,912	4,649	221	4,870
	3,345	2,185	320	271	805	4,774	5,487	363	5,850
	-11.4%	-23.8%	-24.7%	-2.6%	-13.8%	-18.1%	-15.3%	-39.1%	-16.8%
Taiwan	76	37	4	2	16	99	110	7	117
	82	29	2	3	15	95	109	4	113
	-7.3%	27.6%	100.0%	-33.3%	6.7%	4.2%	0.9%	75.0%	3.5%
Japan	262	120	61	42	27	374	437	6	443
	270	108	59	39	24	374	424	13	437
	-3.0%	11.1%	3.4%	7.7%	12.5%	0.0%	3.1%	-53.8%	1.4%
South Korea	238	45	22	24	46	235	287	18	305
	261	88	20	34	54	281	347	22	369
	-8.8%	-48.9%	10.0%	-29.4%	-14.8%	-16.4%	-17.3%	-18.2%	-17.3%
Malaysia	220	37	2	22	28	209	250	9	259
	254	43	2	29	31	239	293	6	299
	-13.4%	-14.0%	0.0%	-24.1%	-9.7%	-12.6%	-14.7%	50.0%	-13.4%
Thailand	457	167	35	51	85	523	616	43	659
	421	167	29	56	75	486	610	7	617
	8.6%	0.0%	20.7%	-8.9%	13.3%	7.6%	1.0%	514.3%	6.8%
India	132	78	12	18	19	185	209	13	222
	121	77	8	13	21	172	193	13	206
	9.1%	1.3%	50.0%	38.5%	-9.5%	7.6%	8.3%	0.0%	7.8%
Pakistan, Sri Lanka and Bangladesh	43	20	4	1	6	60	57	10	67
	43	16	1	1	3	56	53	7	60
	0.0%	25.0%	300.0%	0.0%	100.0%	7.1%	7.5%	42.9%	11.7%
Central Asia	227	67	3	9	8	280	280	17	297
	259	66	3	4	10	314	297	31	328
	-12.4%	1.5%	0.0%	125.0%	-20.0%	-10.8%	-5.7%	-45.2%	-9.5%
Remainder of Far East	511	136	14	25	62	574	633	28	661
	539	170	24	24	69	640	703	30	733
	-5.2%	-20.0%	-41.7%	4.2%	-10.1%	-10.3%	-10.0%	-6.7%	-9.8%
Oceania	53	28	5	3	12	71	80	6	86
	60	29	11	9	11	80	95	5	100
	-11.7%	-3.4%	-54.5%	-66.7%	9.1%	-11.3%	-15.8%	20.0%	-14.0%
Total	14,849	8,843	1,179	1,309	2,735	20,827	24,138	733	24,871
	14,442	8,494	1,015	1,302	2,556	20,093	23,148	803	23,951
	2.8%	4.1%	16.2%	0.5%	7.0%	3.7%	4.3%	-8.7%	3.8%

Table 10. Changes to non-British pupils whose parents live in the UK

For ISC schools that participated in the census in both 2021 and 2022, this table shows the number of non-British pupils whose parents live in the UK broken down by country/area of nationality.

	Senior	Mixed-age	Junior	Single-sex: boys'	Single-sex: girls'	Co-ed	Schools with boarders	Day schools	Total
France	445	1,838	539	243	368	2,211	657	2,165	2,822
	468	1,837	540	286	366	2,193	655	2,190	2,845
	-4.9%	0.1%	-0.2%	-15.0%	0.5%	0.8%	0.3%	-1.1%	-0.8%
Germany	273	571	331	155	268	752	445	730	1,175
	302	635	341	165	275	838	499	779	1,278
	-9.6%	-10.1%	-2.9%	-6.1%	-2.5%	-10.3%	-10.8%	-6.3%	-8.1%
Russia	244	355	343	149	151	642	395	547	942
	262	378	387	151	165	711	442	585	1,027
	-6.9%	-6.1%	-11.4%	-1.3%	-8.5%	-9.7%	-10.6%	-6.5%	-8.3%
Spain	232	823	243	116	208	974	311	987	1,298
	239	768	268	120	184	971	331	944	1,275
	-2.9%	7.2%	-9.3%	-3.3%	13.0%	0.3%	-6.0%	4.6%	1.8%
Ireland	443	650	270	139	292	932	617	746	1,363
	471	631	279	154	299	928	612	769	1,381
	-5.9%	3.0%	-3.2%	-9.7%	-2.3%	0.4%	0.8%	-3.0%	-1.3%
Italy	411	639	364	212	293	909	422	992	1,414
	415	650	420	213	297	975	415	1,070	1,485
	-1.0%	-1.7%	-13.3%	-0.5%	-1.3%	-6.8%	1.7%	-7.3%	-4.8%
Poland	102	210	71	28	78	277	152	231	383
	93	213	64	27	67	276	158	212	370
	9.7%	-1.4%	10.9%	3.7%	16.4%	0.4%	-3.8%	9.0%	3.5%
Romania	68	134	77	19	35	225	97	182	279
	58	130	86	21	32	221	93	181	274
	17.2%	3.1%	-10.5%	-9.5%	9.4%	1.8%	4.3%	0.6%	1.8%
Remainder of Europe (EEA)	1,119	1,873	1,049	490	733	2,818	1,582	2,459	4,041
	1,147	1,919	1,139	521	762	2,922	1,570	2,635	4,205
	-2.4%	-2.4%	-7.9%	-6.0%	-3.8%	-3.6%	0.8%	-6.7%	-3.9%
Remainder of Europe (non-EEA)	213	357	258	90	115	623	339	489	828
	198	384	269	80	114	657	310	541	851
	7.6%	-7.0%	-4.1%	12.5%	0.9%	-5.2%	9.4%	-9.6%	-2.7%
Nigeria	160	291	119	46	98	426	333	237	570
	151	264	103	48	94	376	295	223	518
	6.0%	10.2%	15.5%	-4.2%	4.3%	13.3%	12.9%	6.3%	10.0%
Rest of Africa	228	542	266	60	159	817	447	589	1,036
	234	518	289	56	145	840	441	600	1,041
	-2.6%	4.6%	-8.0%	7.1%	9.7%	-2.7%	1.4%	-1.8%	-0.5%
USA	568	1,893	1,209	300	526	2,844	1,620	2,050	3,670
	595	1,952	1,095	345	479	2,818	1,581	2,061	3,642
	-4.5%	-3.0%	10.4%	-13.0%	9.8%	0.9%	2.5%	-0.5%	0.8%
Rest of North America	97	236	127	51	76	333	167	293	460
	92	260	185	57	71	409	192	345	537
	5.4%	-9.2%	-31.4%	-10.5%	7.0%	-18.6%	-13.0%	-15.1%	-14.3%
Central and South America	99	247	136	34	55	393	153	329	482
	80	217	135	29	51	352	149	283	432
	23.8%	13.8%	0.7%	17.2%	7.8%	11.6%	2.7%	16.3%	11.6%
Middle East	139	720	226	55	86	944	165	920	1,085
	116	562	203	44	80	757	150	731	881
	19.8%	28.1%	11.3%	25.0%	7.5%	24.7%	10.0%	25.9%	23.2%
Hong Kong	441	842	248	145	339	1,047	922	609	1,531
	139	222	135	66	93	337	306	190	496
	217.3%	279.3%	83.7%	119.7%	264.5%	210.7%	201.3%	220.5%	208.7%
Mainland China	681	1,463	968	503	786	1,823	1,436	1,676	3,112
	515	1,094	909	403	527	1,588	1,162	1,356	2,518
	32.2%	33.7%	6.5%	24.8%	49.1%	14.8%	23.6%	23.6%	23.6%
Taiwan	7	15	13	3	5	27	17	18	35
	6	18	14	5	5	28	19	19	38
	16.7%	-16.7%	-7.1%	-40.0%	0.0%	-3.6%	-10.5%	-5.3%	-7.9%
Japan	110	228	262	45	116	439	154	446	600
	113	240	274	50	128	449	159	468	627
	-2.7%	-5.0%	-4.4%	-10.0%	-9.4%	-2.2%	-3.1%	-4.7%	-4.3%
South Korea	105	172	130	52	133	222	145	262	407
	114	166	151	49	146	236	146	285	431
	-7.9%	3.6%	-13.9%	6.1%	-8.9%	-5.9%	-0.7%	-8.1%	-5.6%
Malaysia	40	72	44	29	43	84	57	99	156
	39	72	45	25	36	95	60	96	156
	2.6%	0.0%	-2.2%	16.0%	19.4%	-11.6%	-5.0%	3.1%	0.0%
Thailand	21	32	18	3	8	60	49	22	71
	14	27	11	7	9	36	38	14	52
	50.0%	18.5%	63.6%	-57.1%	-11.1%	66.7%	28.9%	57.1%	36.5%
India	183	786	407	171	363	842	281	1,095	1,376
	179	711	372	166	335	761	254	1,008	1,262
	2.2%	10.5%	9.4%	3.0%	8.4%	10.6%	10.6%	8.6%	9.0%
Pakistan, Sri Lanka and Bangladesh	85	251	80	56	96	264	84	332	416
	66	266	84	59	104	253	97	319	416
	28.8%	-5.6%	-4.8%	-5.1%	-7.7%	4.3%	-13.4%	4.1%	0.0%
Central Asia	43	65	52	16	25	119	63	97	160
	53	64	60	10	33	134	69	108	177
	-18.9%	1.6%	-13.3%	60.0%	-24.2%	-11.2%	-8.7%	-10.2%	-9.6%
Remainder of Far East	99	129	91	21	74	224	158	161	319
	92	151	88	15	63	253	142	189	331
	7.6%	-14.6%	3.4%	40.0%	17.5%	-11.5%	11.3%	-14.8%	-3.6%
Oceania	217	345	249	71	145	595	358	453	811
	207	390	252	63	163	623	298	551	849
	4.8%	-11.5%	-1.2%	12.7%	-11.0%	-4.5%	20.1%	-17.8%	-4.5%
Total	6,873	15,779	8,190	3,302	5,674	21,866	11,626	19,216	30,842
	6,458	14,739	8,198	3,235	5,123	21,037	10,643	18,752	29,395
	6.4%	7.1%	-0.1%	2.1%	10.8%	3.9%	9.2%	2.5%	4.9%

Table 11. Changes to British pupils whose parents live overseas

For ISC schools that participated in the census in both 2021 and 2022, this table shows the number of British pupils whose parents live overseas and the number of British pupils whose parents serve in HM Forces and those who are new to their school this year.

British pupils whose parents:	Senior	Mixed-age	Junior	Single-sex: boys'	Single-sex: girls'	Co-ed	Schools with	Day schools	Total
Live abroad	2,315	1,008	167	399	478	2,613	3,300	190	3,490
	2,365	1,013	221	354	529	2,716	3,381	218	3,599
	-2.1%	-0.5%	-24.4%	12.7%	-9.6%	-3.8%	-2.4%	-12.8%	-3.0%
Serve in HM Forces	1,413	1,892	1,295	174	285	4,141	4,030	570	4,600
	1,306	1,718	1,269	175	322	3,796	3,710	583	4,293
	8.2%	10.1%	2.0%	-0.6%	-11.5%	9.1%	8.6%	-2.2%	7.2%
New British pupils whose parents:									
Live abroad	753	296	45	104	124	866	1,031	63	1,094
	653	286	60	68	129	802	950	49	999
	15.3%	3.5%	-25.0%	52.9%	-3.9%	8.0%	8.5%	28.6%	9.5%
Serve in HM Forces	215	315	278	33	35	740	717	91	808
	257	280	272	37	48	724	690	119	809
	-16.3%	12.5%	2.2%	-10.8%	-27.1%	2.2%	3.9%	-23.5%	-0.1%

Table 12. Changes to teacher numbers¹

This table shows the number of teachers in ISC schools that participated in the census in 2021 and 2022.

Full-time	Senior	Mixed-age	Junior	Single-sex: boys'	Single-sex: girls'	Co-ed	Schools with	Day schools	Total
Men	6,955	9,015	3,506	2,677	1,667	15,132	10,236	9,240	19,476
	6,910	8,830	3,525	2,685	1,642	14,938	10,125	9,140	19,265
	0.7%	2.1%	-0.5%	-0.3%	1.5%	1.3%	1.1%	1.1%	1.1%
Women	6,160	13,567	8,131	1,778	4,858	21,222	11,235	16,623	27,858
	6,026	13,445	8,014	1,774	4,935	20,776	11,043	16,442	27,485
	2.2%	0.9%	1.5%	0.2%	-1.6%	2.1%	1.7%	1.1%	1.4%
Total	13,115	22,582	11,637	4,455	6,525	36,354	21,471	25,863	47,334
	12,936	22,275	11,539	4,459	6,577	35,714	21,168	25,582	46,750
	1.4%	1.4%	0.8%	-0.1%	-0.8%	1.8%	1.4%	1.1%	1.2%
Part-time									
Men	1,127	1,411	569	302	408	2,397	1,466	1,641	3,107
	1,110	1,443	556	307	369	2,433	1,429	1,680	3,109
	1.5%	-2.2%	2.3%	-1.6%	10.6%	-1.5%	2.6%	-2.3%	-0.1%
Women	3,220	7,034	3,618	655	3,074	10,143	5,300	8,572	13,872
	3,260	7,044	3,721	710	3,144	10,171	5,410	8,615	14,025
	-1.2%	-0.1%	-2.8%	-7.7%	-2.2%	-0.3%	-2.0%	-0.5%	-1.1%
Total	4,347	8,445	4,187	957	3,482	12,540	6,766	10,213	16,979
	4,370	8,487	4,277	1,017	3,513	12,604	6,839	10,295	17,134
	-0.5%	-0.5%	-2.1%	-5.9%	-0.9%	-0.5%	-1.1%	-0.8%	-0.9%
Part-time hours									
Men	18,190	26,007	9,755	5,449	7,417	41,086	24,694	29,258	53,952
	17,580	26,054	9,292	5,309	6,385	41,233	24,133	28,793	52,926
	3.5%	-0.2%	5.0%	2.6%	16.2%	-0.4%	2.3%	1.6%	1.9%
Women	59,079	140,231	71,000	13,750	58,750	197,809	100,697	169,612	270,310
	57,930	138,310	72,962	14,518	58,039	196,645	100,960	168,243	269,203
	2.0%	1.4%	-2.7%	-5.3%	1.2%	0.6%	-0.3%	0.8%	0.4%
Total	77,269	166,237	80,755	19,199	66,167	238,895	125,391	198,870	324,261
	75,510	164,364	82,254	19,827	64,424	237,878	125,092	197,036	322,128
	2.3%	1.1%	-1.8%	-3.2%	2.7%	0.4%	0.2%	0.9%	0.7%
Overall full-time equivalent (32.5 hours = 1 full-time)									
Men	7,515	9,815	3,806	2,845	1,895	16,396	10,996	10,140	21,136
	7,451	9,632	3,811	2,848	1,838	16,207	10,868	10,026	20,893
	0.9%	1.9%	-0.1%	-0.1%	3.1%	1.2%	1.2%	1.1%	1.2%
Women	7,978	17,882	10,316	2,201	6,666	27,308	14,333	21,842	36,175
	7,808	17,701	10,259	2,221	6,721	26,827	14,149	21,619	35,768
	2.2%	1.0%	0.6%	-0.9%	-0.8%	1.8%	1.3%	1.0%	1.1%
Total	15,493	27,697	14,122	5,046	8,561	43,705	25,329	31,982	57,311
	15,259	27,332	14,070	5,069	8,559	43,033	25,017	31,645	56,662
	1.5%	1.3%	0.4%	-0.5%	0.0%	1.6%	1.2%	1.1%	1.1%

¹ Excludes nursery staff.

Table 13. Changes to teaching assistant numbers¹

This table shows the number of teaching assistants in ISC schools that participated in the census in 2021 and 2022.

Full-time	Senior	Mixed-age	Junior	Single-sex: boys'	Single-sex: girls'	Co-ed	Schools with boarders	Day schools	Total
Men	129	375	415	103	25	791	298	621	919
	113	360	410	100	37	746	267	616	883
	14.2%	4.2%	1.2%	3.0%	-32.4%	6.0%	11.6%	0.8%	4.1%
Women	264	2,347	3,284	388	585	4,922	1,391	4,504	5,895
	270	2,277	3,205	367	600	4,785	1,415	4,337	5,752
	-2.2%	3.1%	2.5%	5.7%	-2.5%	2.9%	-1.7%	3.9%	2.5%
Total	393	2,722	3,699	491	610	5,713	1,689	5,125	6,814
	383	2,637	3,615	467	637	5,531	1,682	4,953	6,635
	2.6%	3.2%	2.3%	5.1%	-4.2%	3.3%	0.4%	3.5%	2.7%
Part-time									
Men	65	136	119	36	25	259	105	215	320
	63	137	103	32	23	248	119	184	303
	3.2%	-0.7%	15.5%	12.5%	8.7%	4.4%	-11.8%	16.8%	5.6%
Women	366	2,176	2,391	252	609	4,072	1,469	3,464	4,933
	363	2,087	2,354	262	612	3,930	1,432	3,372	4,804
	0.8%	4.3%	1.6%	-3.8%	-0.5%	3.6%	2.6%	2.7%	2.7%
Total	431	2,312	2,510	288	634	4,331	1,574	3,679	5,253
	426	2,224	2,457	294	635	4,178	1,551	3,556	5,107
	1.2%	4.0%	2.2%	-2.0%	-0.2%	3.7%	1.5%	3.5%	2.9%
Part-time hours									
Men	991	2,557	2,273	681	492	4,647	1,801	4,019	5,820
	884	2,560	1,827	540	403	4,328	2,010	3,261	5,271
	12.1%	-0.1%	24.4%	26.2%	22.1%	7.4%	-10.4%	23.3%	10.4%
Women	6,186	45,062	49,652	5,226	11,917	83,757	29,264	71,636	100,900
	6,250	43,294	49,255	5,723	12,330	80,745	28,434	70,364	98,798
	-1.0%	4.1%	0.8%	-8.7%	-3.3%	3.7%	2.9%	1.8%	2.1%
Total	7,177	47,619	51,925	5,907	12,409	88,404	31,065	75,655	106,720
	7,133	45,854	51,082	6,263	12,733	85,073	30,444	73,625	104,069
	0.6%	3.8%	1.7%	-5.7%	-2.5%	3.9%	2.0%	2.8%	2.5%
Overall full-time equivalent (32.5 hours = 1 full-time)									
Men	159	454	485	124	40	934	353	745	1,098
	140	439	466	117	49	879	329	716	1,045
	13.8%	3.4%	4.0%	6.3%	-18.7%	6.2%	7.5%	4.0%	5.1%
Women	454	3,734	4,812	549	952	7,499	2,291	6,708	9,000
	462	3,609	4,721	543	979	7,269	2,290	6,502	8,792
	-1.7%	3.4%	1.9%	1.0%	-2.8%	3.2%	0.1%	3.2%	2.4%
Total	614	4,187	5,297	673	992	8,433	2,645	7,453	10,098
	602	4,048	5,187	660	1,029	8,149	2,619	7,218	9,837
	1.9%	3.4%	2.1%	2.0%	-3.6%	3.5%	1.0%	3.2%	2.6%

¹ Excludes nursery staff.

Table 14. Changes to pupil-teacher ratios

This table shows the pupil and teacher gender ratios along with pupil-teacher ratio in ISC schools that participated in the census in 2021 and 2022.

Full-time	Senior	Mixed-age	Junior	Single-sex: boys ¹	Single-sex: girls ¹	Co-ed	Schools with boarders	Day schools	Total
Boys	65,975	123,248	83,837	46,291	210	226,559	111,982	161,078	273,060
	64,920	120,096	83,337	46,372	242	221,739	109,412	158,941	268,353
	1.6%	2.6%	0.6%	-0.2%	-13.2%	2.2%	2.3%	1.3%	1.8%
Girls	57,115	143,214	65,501	129	77,809	187,892	98,351	167,479	265,830
	55,791	139,236	65,014	156	76,878	183,007	95,287	164,754	260,041
	2.4%	2.9%	0.7%	-17.3%	1.2%	2.7%	3.2%	1.7%	2.2%
Total	123,090	266,462	149,338	46,420	78,019	414,451	210,333	328,557	538,890
	120,711	259,332	148,351	46,528	77,120	404,746	204,699	323,695	528,394
	2.0%	2.7%	0.7%	-0.2%	1.2%	2.4%	2.8%	1.5%	2.0%
Ratios									
Pupil-teacher¹	7.9:1	9.3:1	9.3:1	9.0:1	8.9:1	8.9:1	8.0:1	9.6:1	8.9:1
	7.9:1	9.1:1	9.3:1	9.0:1	8.8:1	8.8:1	7.9:1	9.6:1	8.8:1
	0.4%	1.5%	0.4%	0.2%	1.2%	1.0%	1.6%	0.5%	0.9%
Boys:girls (pupils)	1.2:1	0.9:1	1.3:1	358.8:1	0.0:1	1.2:1	1.1:1	1.0:1	1.0:1
	1.2:1	0.9:1	1.3:1	297.3:1	0.0:1	1.2:1	1.1:1	1.0:1	1.0:1
	-0.7%	-0.2%	-0.1%	20.7%	-14.3%	-0.5%	-0.8%	-0.3%	-0.5%
Men:women (teachers)²	0.9:1	0.5:1	0.4:1	1.3:1	0.3:1	0.6:1	0.8:1	0.5:1	0.6:1
	1.0:1	0.5:1	0.4:1	1.3:1	0.3:1	0.6:1	0.8:1	0.5:1	0.6:1
	-1.3%	0.9%	-0.7%	0.8%	3.9%	-0.6%	-0.1%	0.1%	0.0%
Men:women (teaching assistants)²	0.4:1	0.1:1	0.1:1	0.2:1	0.0:1	0.1:1	0.2:1	0.1:1	0.1:1
	0.3:1	0.1:1	0.1:1	0.2:1	0.1:1	0.1:1	0.1:1	0.1:1	0.1:1
	15.8%	-0.1%	2.0%	5.2%	-16.4%	3.0%	7.4%	0.8%	2.6%

¹ Pupil-teacher ratio excludes nursery teachers and nursery pupils.

² Excludes nursery staff.

Table 15. Changes to full-time teachers

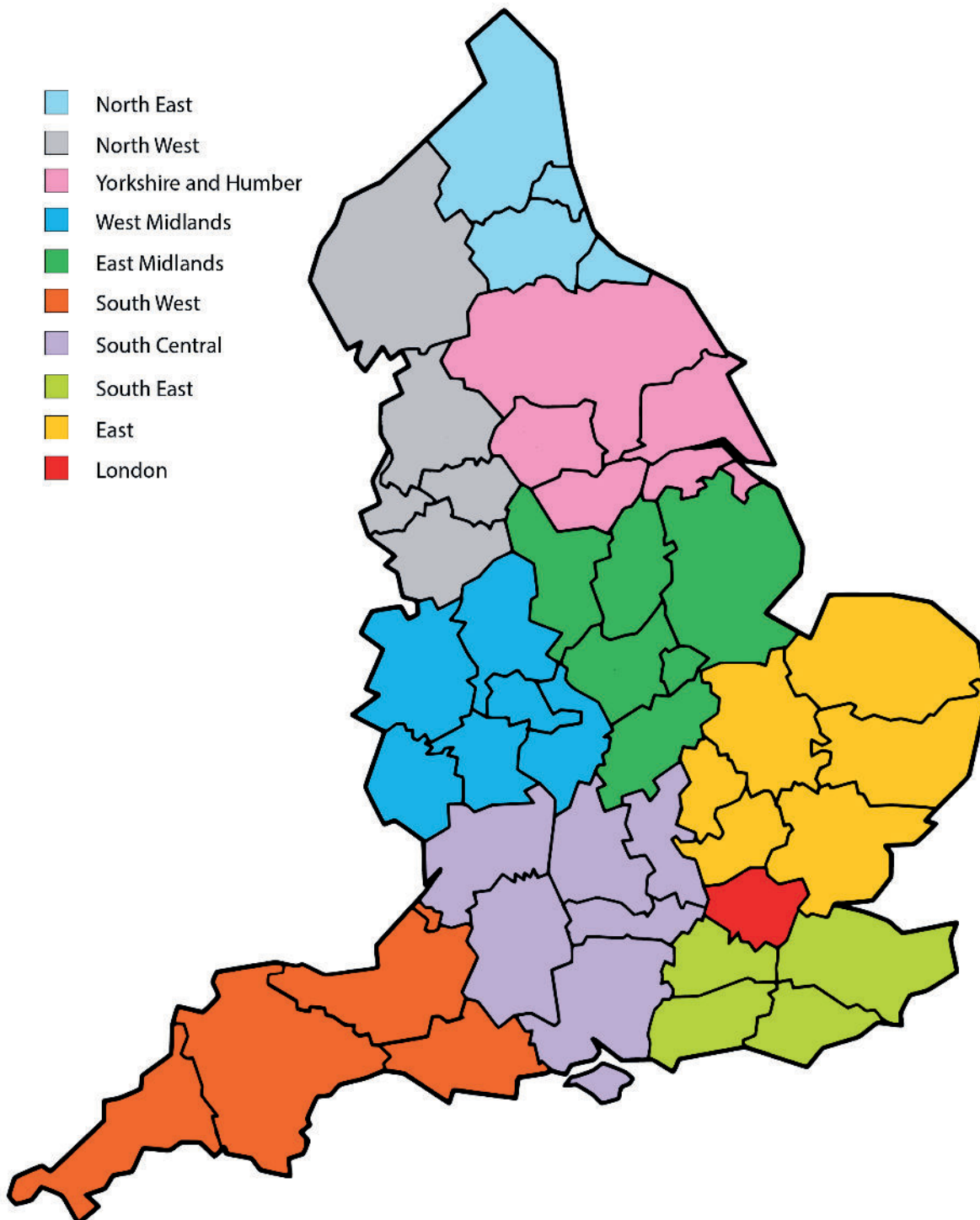
This table shows the number of full-time teaching staff coming into ISC schools (broken down by previous occupation) and leaving schools (broken down by destination). This table comprises those schools that participated in the census in both 2021 and 2022.

Arriving from	Senior	Mixed-age	Junior	Single-sex: boys'	Single-sex: girls'	Co-ed	Schools with boarders	Day schools	Total
Independent schools	576	897	647	183	312	1,625	1,004	1,116	2,120
	639	852	482	174	398	1,401	918	1,055	1,973
	-9.9%	5.3%	34.2%	5.2%	-21.6%	16.0%	9.4%	5.8%	7.5%
State-funded schools	457	1,044	453	117	276	1,561	768	1,186	1,954
	371	878	358	133	242	1,232	588	1,019	1,607
	23.2%	18.9%	26.5%	-12.0%	14.0%	26.7%	30.6%	16.4%	21.6%
ITT at university or training college	135	223	64	39	72	311	175	247	422
	87	153	55	27	35	233	114	181	295
	55.2%	45.8%	16.4%	44.4%	105.7%	33.5%	53.5%	36.5%	43.1%
New graduates	137	183	76	33	60	303	198	198	396
	117	141	70	35	41	252	172	156	328
	17.1%	29.8%	8.6%	-5.7%	46.3%	20.2%	15.1%	26.9%	20.7%
Industry	74	92	38	14	18	172	105	99	204
	72	87	27	12	32	142	92	94	186
	2.8%	5.7%	40.7%	16.7%	-43.8%	21.1%	14.1%	5.3%	9.7%
Outside the UK	142	218	115	50	54	371	235	240	475
	105	200	107	29	45	338	185	227	412
	35.2%	9.0%	7.5%	72.4%	20.0%	9.8%	27.0%	5.7%	15.3%
Other	487	1,044	493	116	413	1,495	798	1,226	2,024
	483	805	420	105	304	1,299	738	970	1,708
	0.8%	29.7%	17.4%	10.5%	35.9%	15.1%	8.1%	26.4%	18.5%
Total	2,008	3,701	1,886	552	1,205	5,838	3,283	4,312	7,595
	1,874	3,116	1,519	515	1,097	4,897	2,807	3,702	6,509
	7.2%	18.8%	24.2%	7.2%	9.8%	19.2%	17.0%	16.5%	16.7%
Going to									
Independent schools	450	606	408	155	269	1,040	666	798	1,464
	480	657	383	134	281	1,105	705	815	1,520
	-6.3%	-7.8%	6.5%	15.7%	-4.3%	-5.9%	-5.5%	-2.1%	-3.7%
State-funded schools	157	373	163	32	111	550	289	404	693
	168	429	158	29	94	632	334	421	755
	-6.5%	-13.1%	3.2%	10.3%	18.1%	-13.0%	-13.5%	-4.0%	-8.2%
Industry	69	110	57	14	29	193	103	133	236
	57	97	49	22	26	155	89	114	203
	21.1%	13.4%	16.3%	-36.4%	11.5%	24.5%	15.7%	16.7%	16.3%
Outside the UK	106	149	107	30	46	286	159	203	362
	111	177	103	41	59	291	173	218	391
	-4.5%	-15.8%	3.9%	-26.8%	-22.0%	-1.7%	-8.1%	-6.9%	-7.4%
Other (incl. retirement)	1,078	2,106	1,053	330	758	3,149	1,801	2,436	4,237
	1,117	2,325	1,260	361	761	3,580	1,958	2,744	4,702
	-3.5%	-9.4%	-16.4%	-8.6%	-0.4%	-12.0%	-8.0%	-11.2%	-9.9%
Total	1,860	3,344	1,788	561	1,213	5,218	3,018	3,974	6,992
	1,933	3,685	1,953	587	1,221	5,763	3,259	4,312	7,571
	-3.8%	-9.3%	-8.4%	-4.4%	-0.7%	-9.5%	-7.4%	-7.8%	-7.6%
Net gain									
Independent schools	126	291	239	28	43	585	338	318	656
	159	195	99	40	117	296	213	240	453
	-20.8%	49.2%	141.4%	-30.0%	-63.2%	97.6%	58.7%	32.5%	44.8%
State-funded schools	300	671	290	85	165	1,011	479	782	1,261
	203	449	200	104	148	600	254	598	852
	47.8%	49.4%	45.0%	-18.3%	11.5%	68.5%	88.6%	30.8%	48.0%
Industry	5	-18	-19	0	-11	-21	2	-34	-32
	15	-10	-22	-10	6	-13	3	-20	-17
	-66.7%	80.0%	-13.6%	-100.0%	-283.3%	61.5%	-33.3%	70.0%	88.2%
Outside the UK	36	69	8	20	8	85	76	37	113
	-6	23	4	-12	-14	47	12	9	21
	-700.0%	200.0%	100.0%	-266.7%	-157.1%	80.9%	533.3%	311.1%	438.1%
Other	-591	-1,062	-560	-214	-345	-1,654	-1,003	-1,210	-2,213
	-634	-1,520	-840	-256	-457	-2,281	-1,220	-1,774	-2,994
	-6.8%	-30.1%	-33.3%	-16.4%	-24.5%	-27.5%	-17.8%	-31.8%	-26.1%
Total	148	357	98	-9	-8	620	265	338	603
	-59	-569	-434	-72	-124	-866	-452	-610	-1,062
	-350.8%	-162.7%	-122.6%	-87.5%	-93.5%	-171.6%	-158.6%	-155.4%	-156.8%
Full-time teachers									
Turnover as % of full-time teachers	14.2	14.8	15.4	12.6	18.6	14.4	14.1	15.4	14.8
	14.9	16.5	16.9	13.2	18.6	16.1	15.4	16.9	16.2
	-5.1%	-10.5%	-9.2%	-4.3%	0.1%	-11.1%	-8.7%	-8.8%	-8.8%
Gain as % of full-time teachers	1.1	1.6	0.8	-0.2	-0.1	1.7	1.2	1.3	1.3
	-0.5	-2.6	-3.8	-1.6	-1.9	-2.4	-2.1	-2.4	-2.3
	347.4%	161.9%	122.4%	87.5%	93.5%	170.3%	157.8%	154.8%	156.1%

Appendix Three

ISC Regions

Fig 1. ISC English Regions



Constituent Associations:

Association of Governing Bodies of
Independent Schools

Girls' Schools Association

Headmasters' and Headmistresses' Conference

Independent Association of Prep Schools

Independent Schools Association

The Independent Schools' Bursars Association

The Society of Heads



☎ 020 7766 7070

First Floor
27 Queen Anne's Gate
London
SW1H 9BU

www.isc.co.uk

A Company Limited by Guarantee.
Registered in England and Wales
No. 1103760